

eawag
aquatic research **ooc**

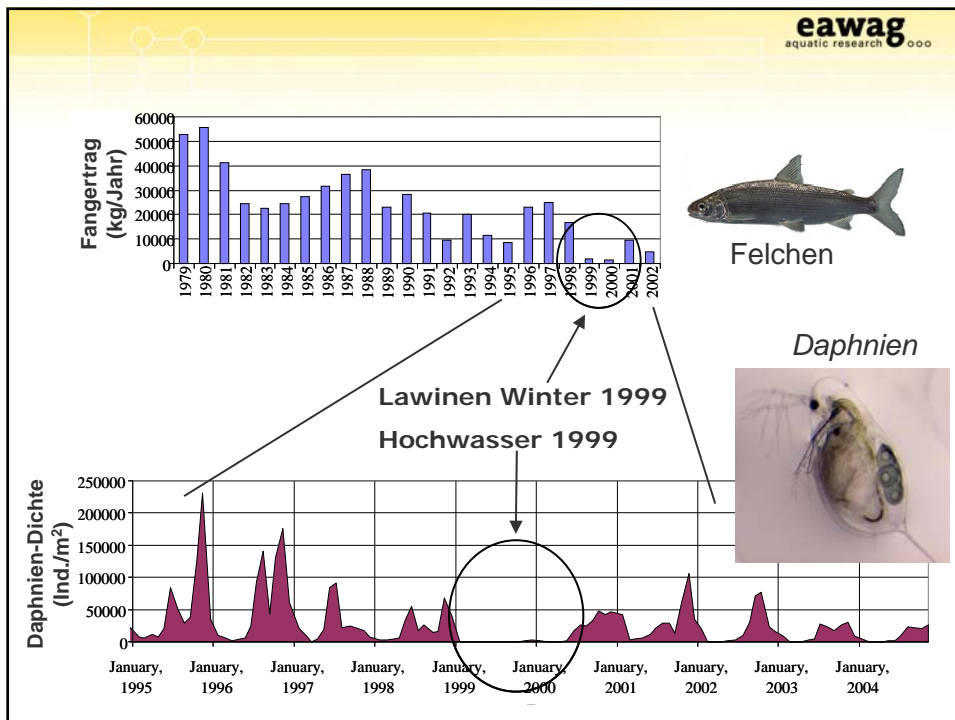
Umwelteinflüsse und Planktodynamik

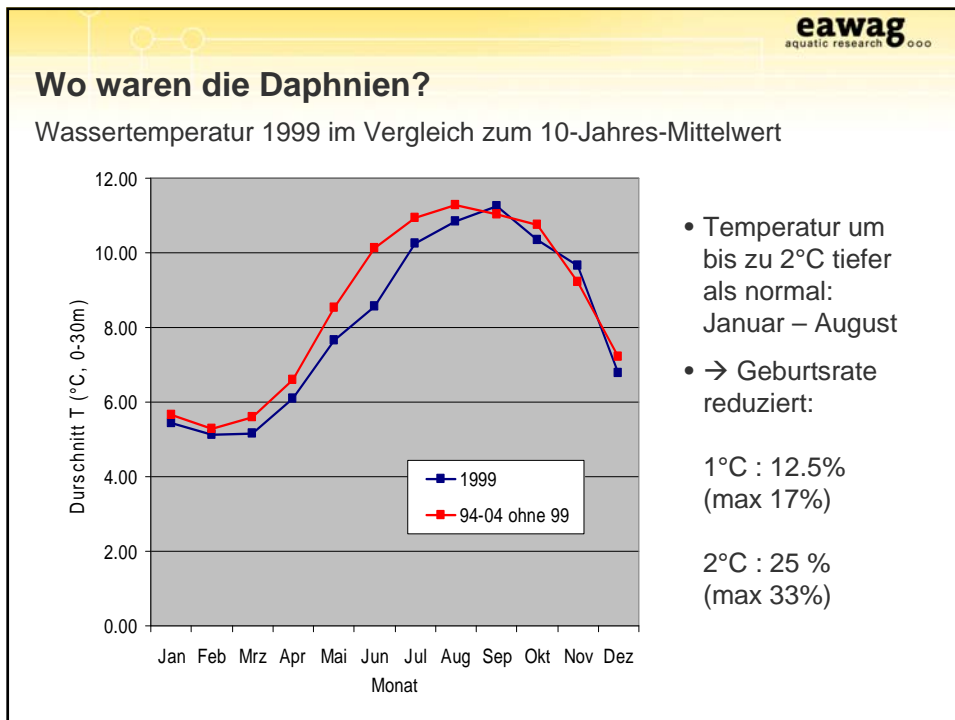
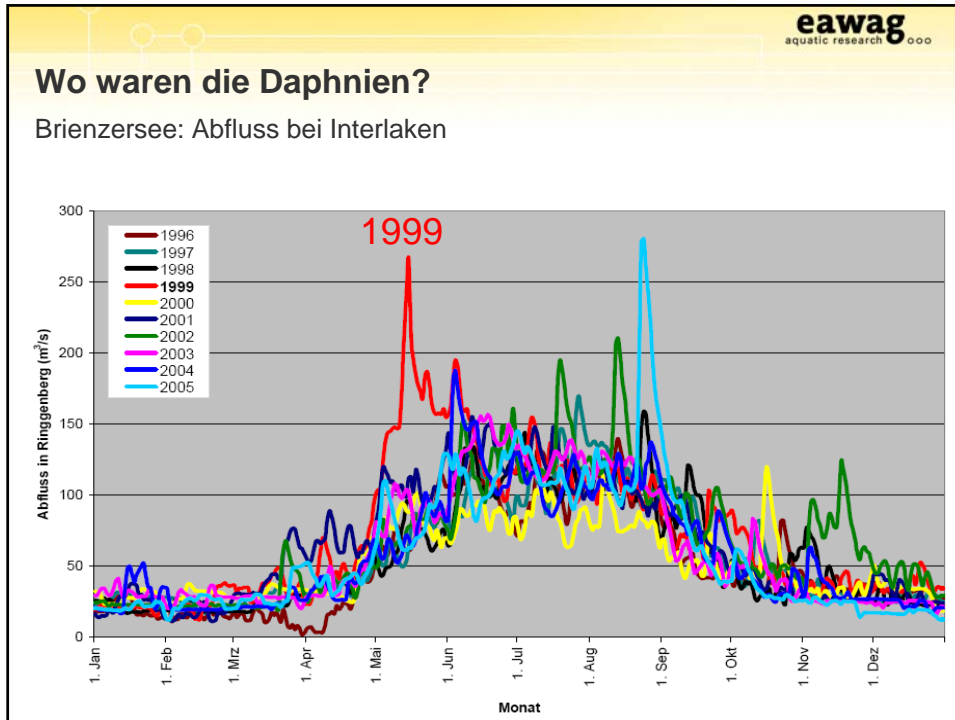
Wasserflöhe als Modellorganismen

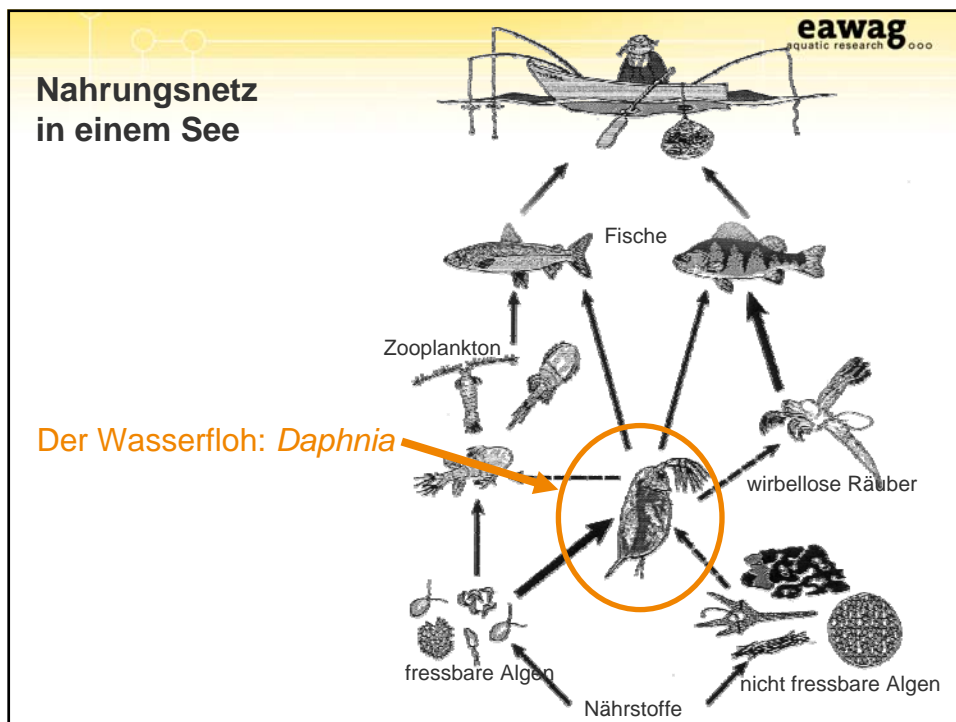
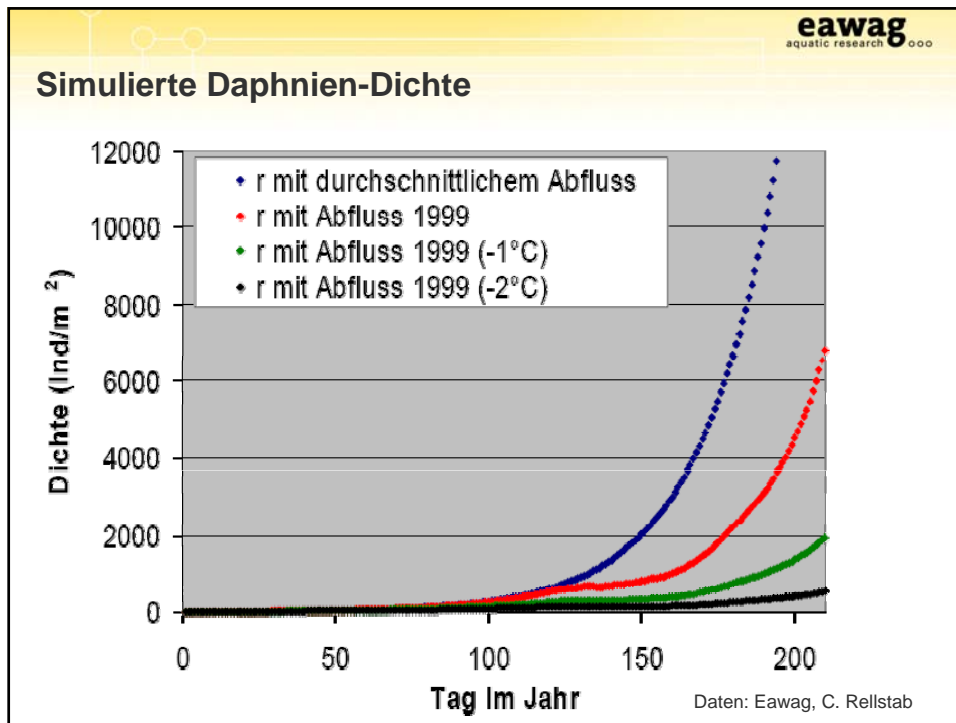
Piet Spaak

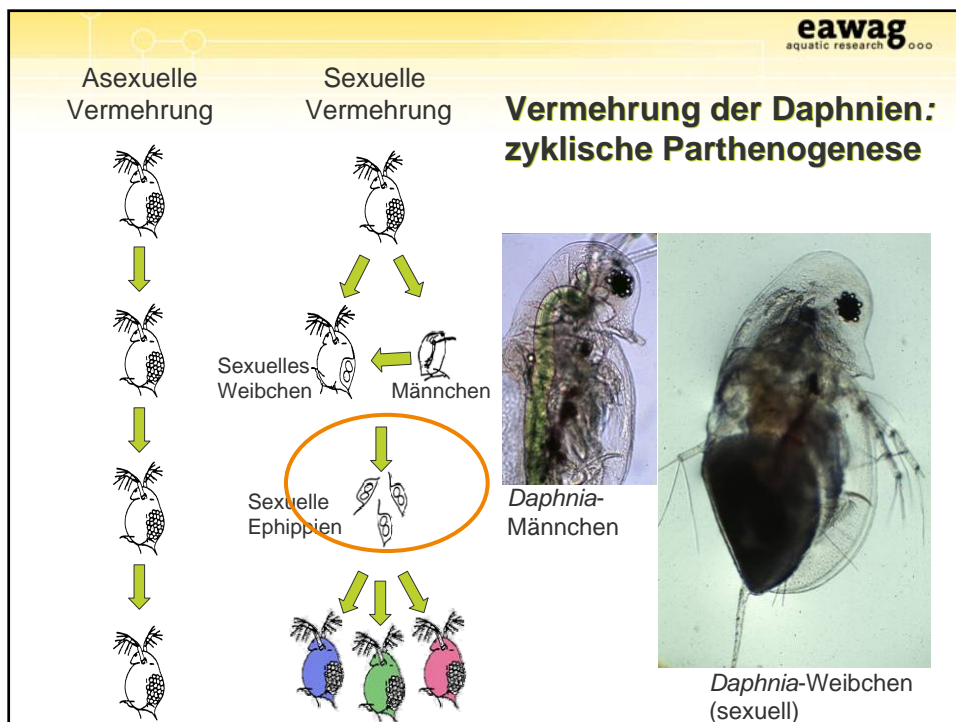
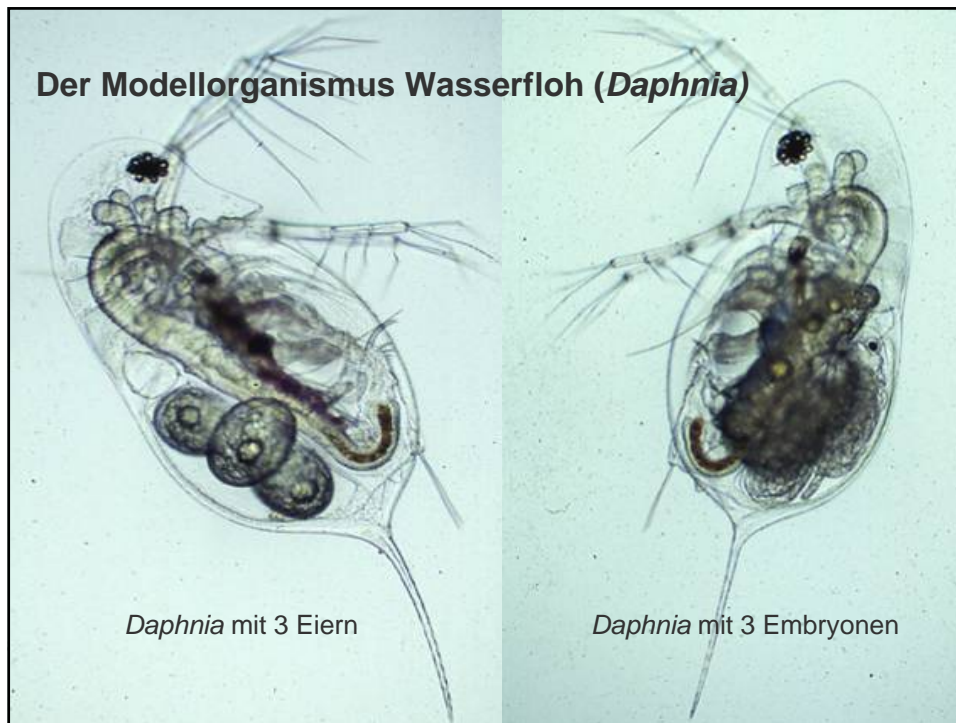
Eawag: Das Wasserforschungs-Institut des ETH-Bereichs

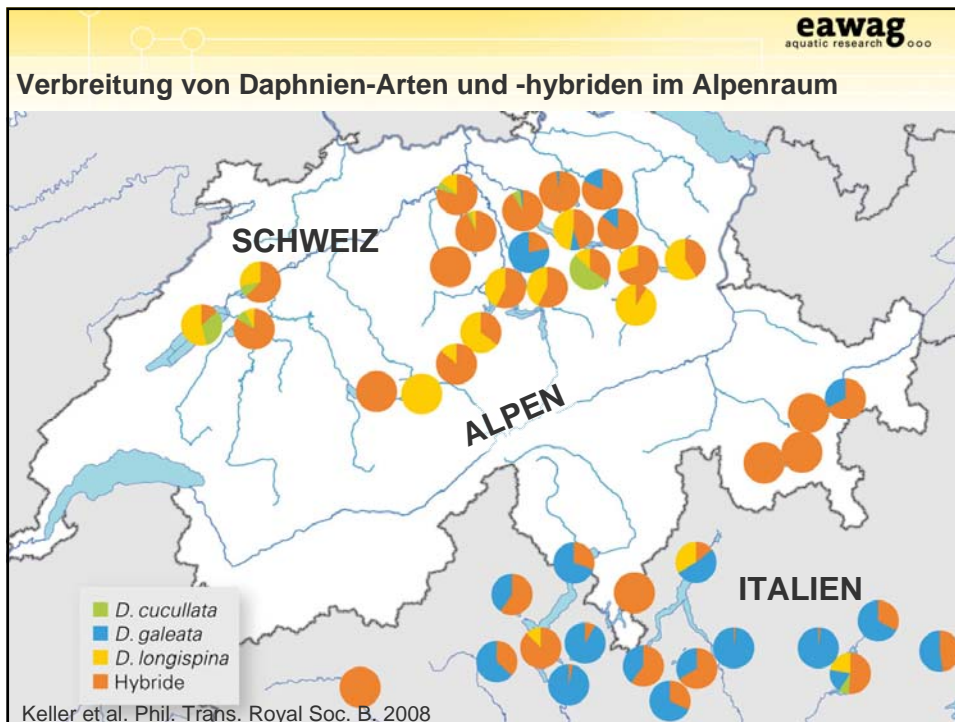
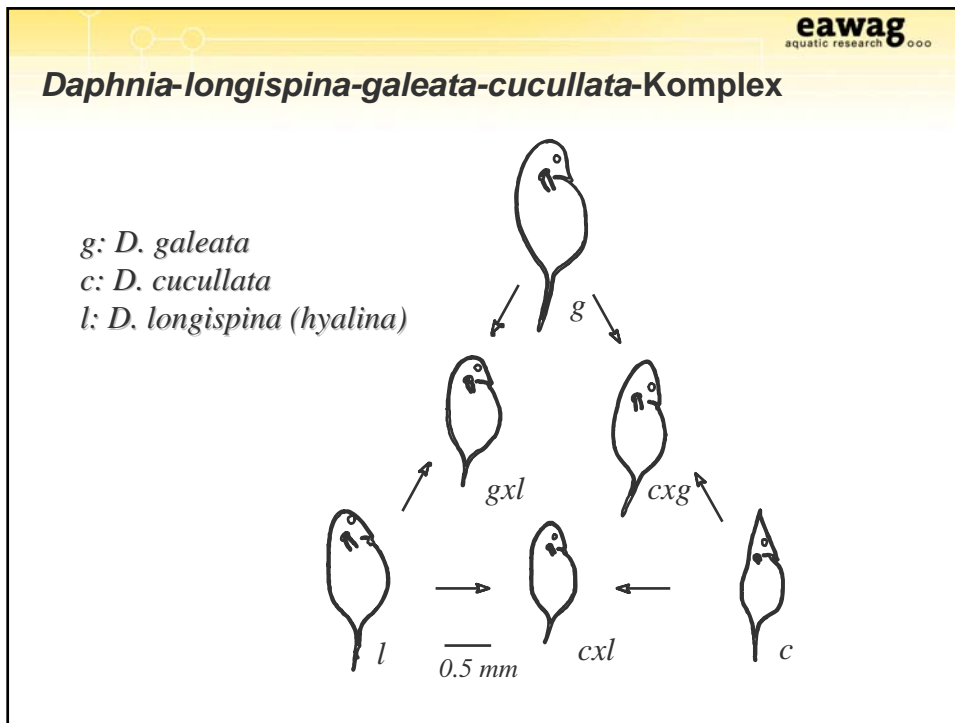


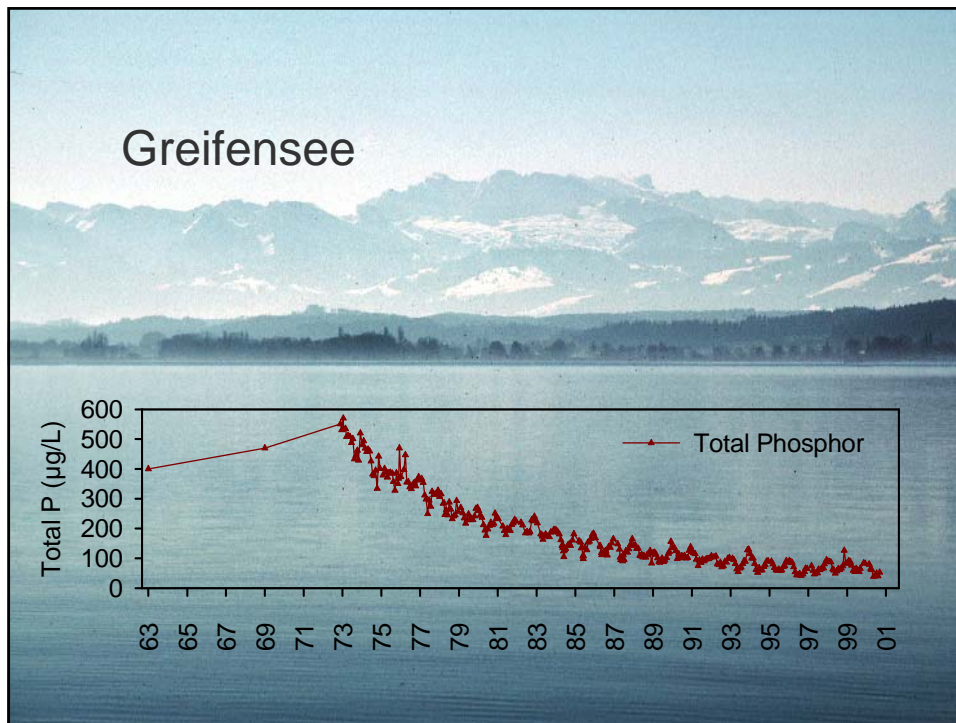












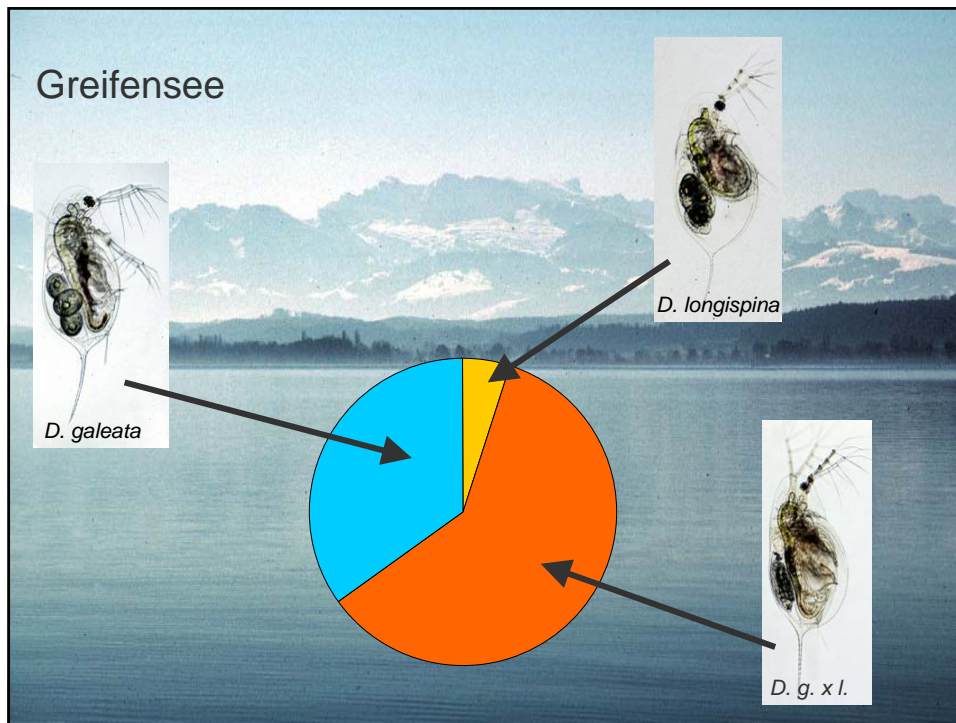
eawag
aquatic research ooc

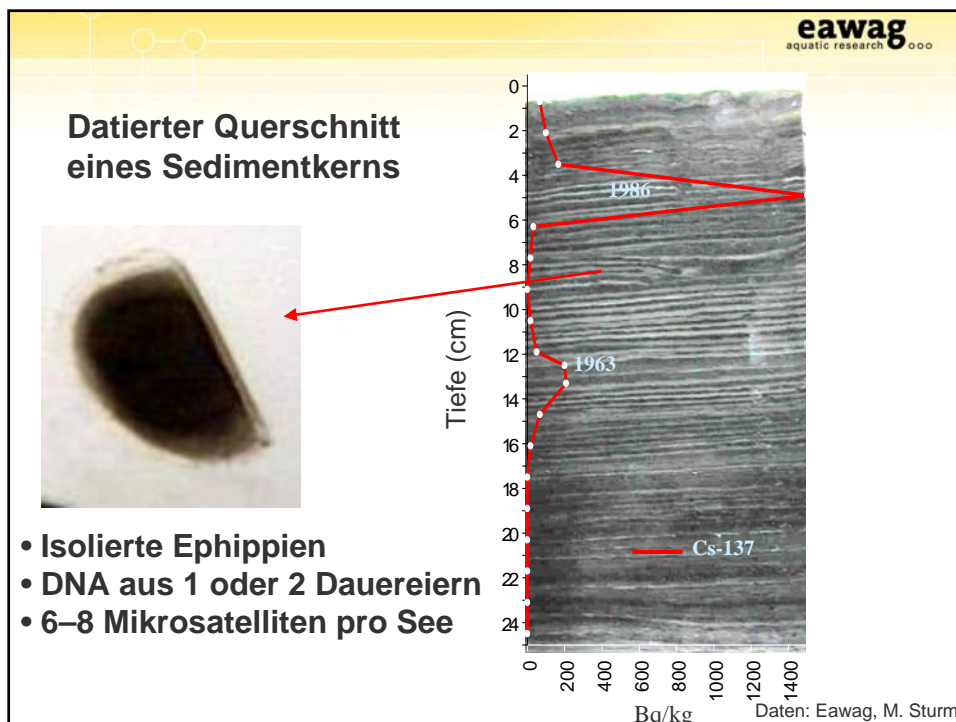
Viele Nährstoffe verursachen Algenblüten

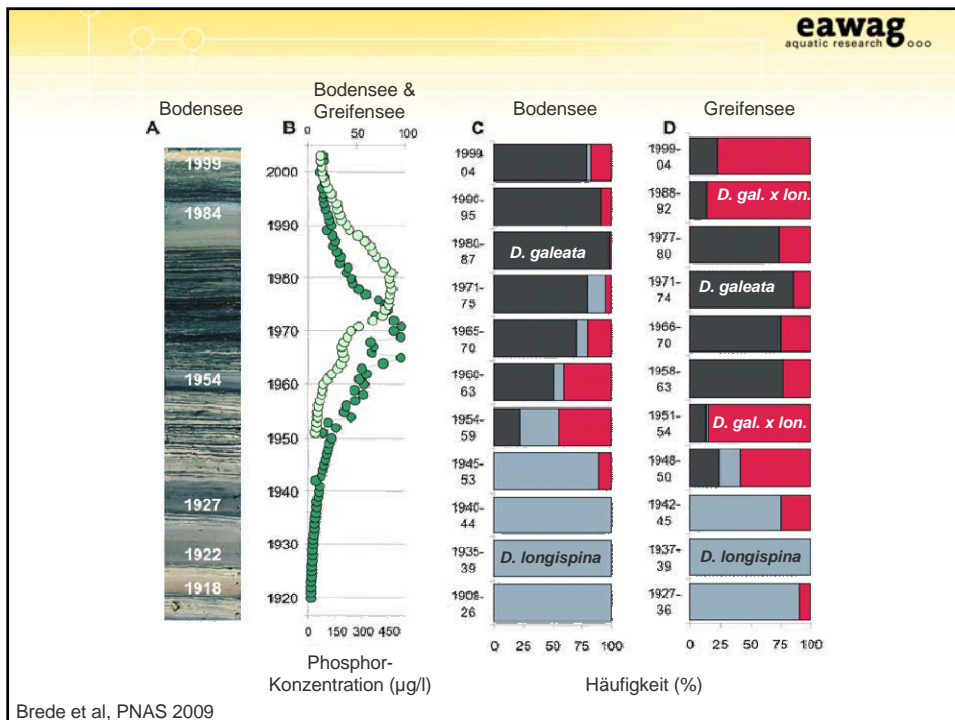
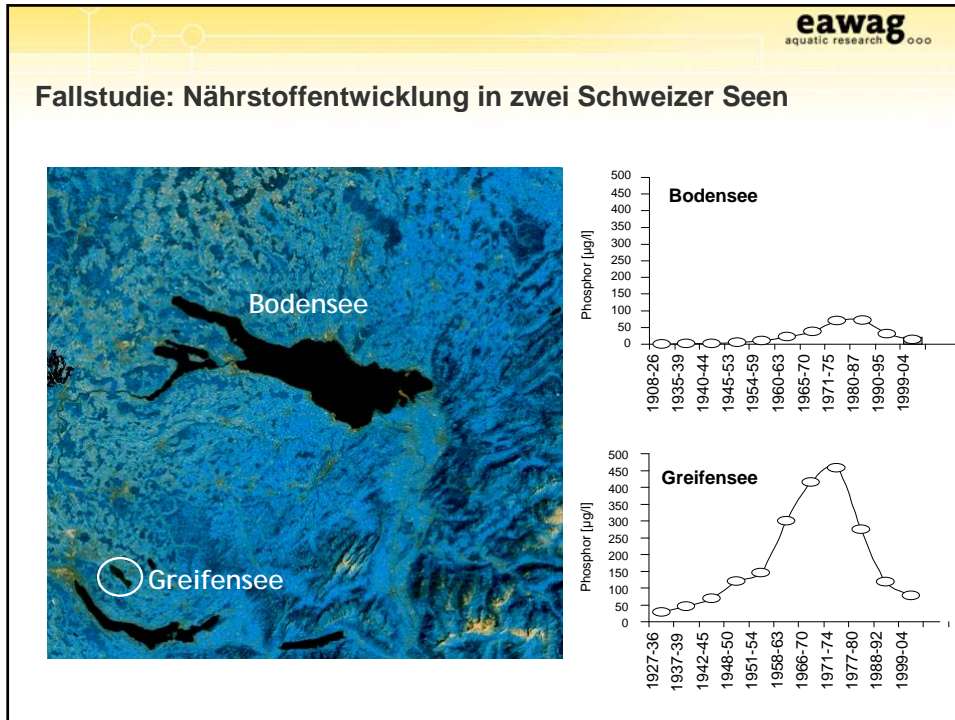
- Eutrophierung

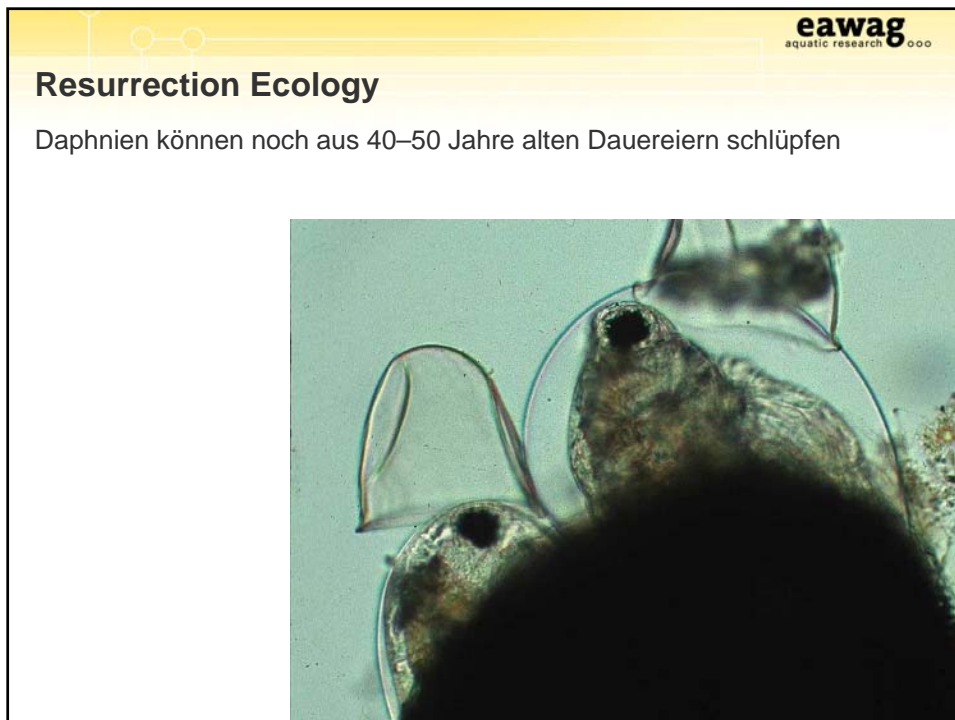
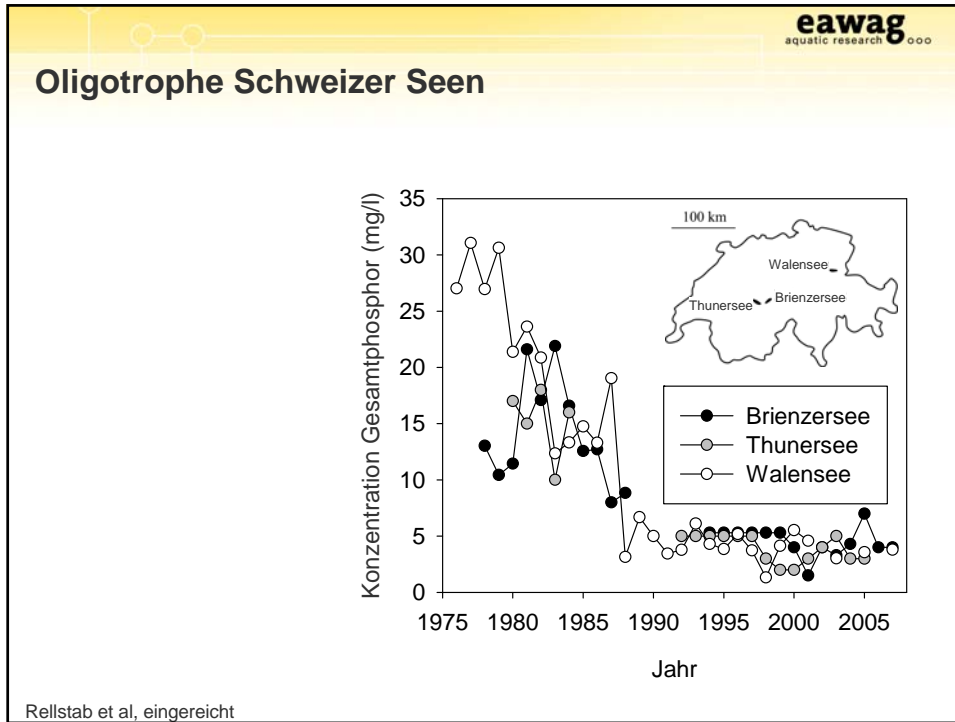
Oligothropher, nährstoffarmer See

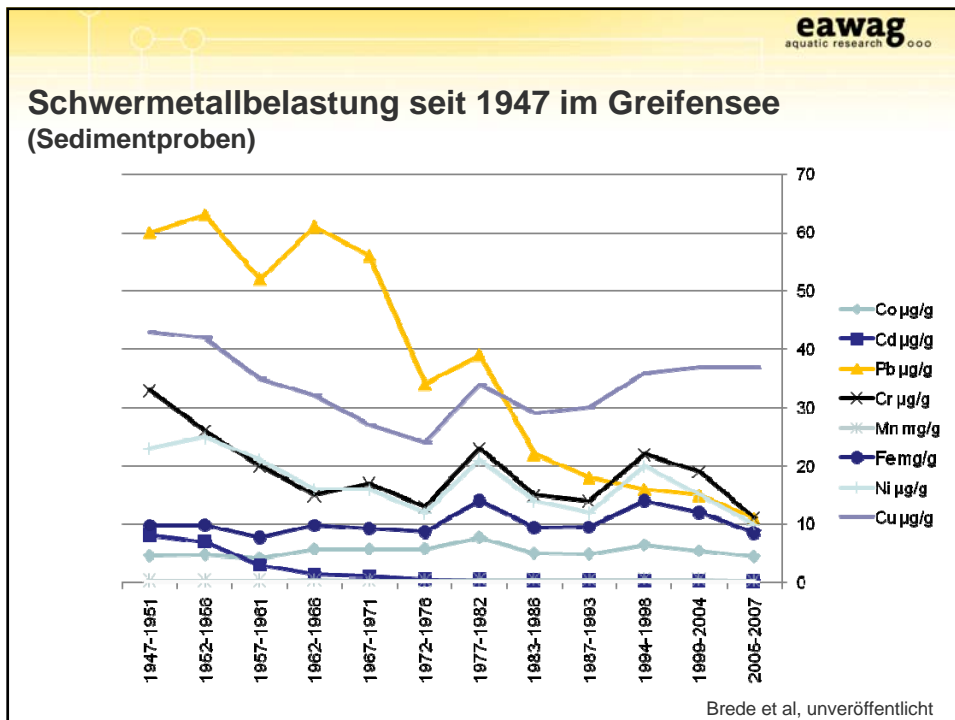
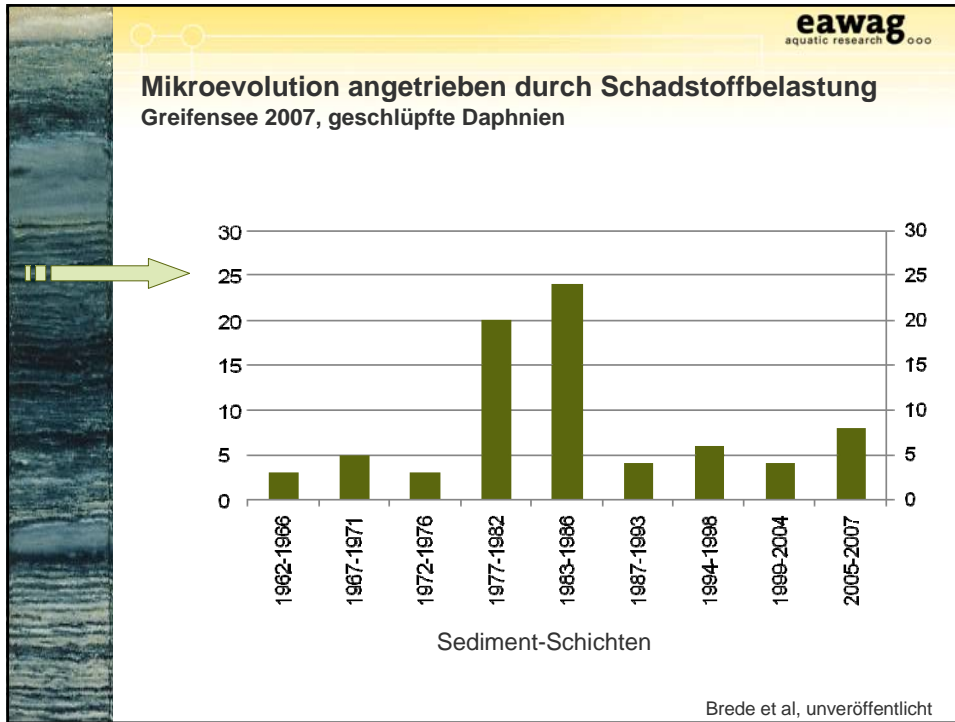
Eutropher, nährstoffreicher See









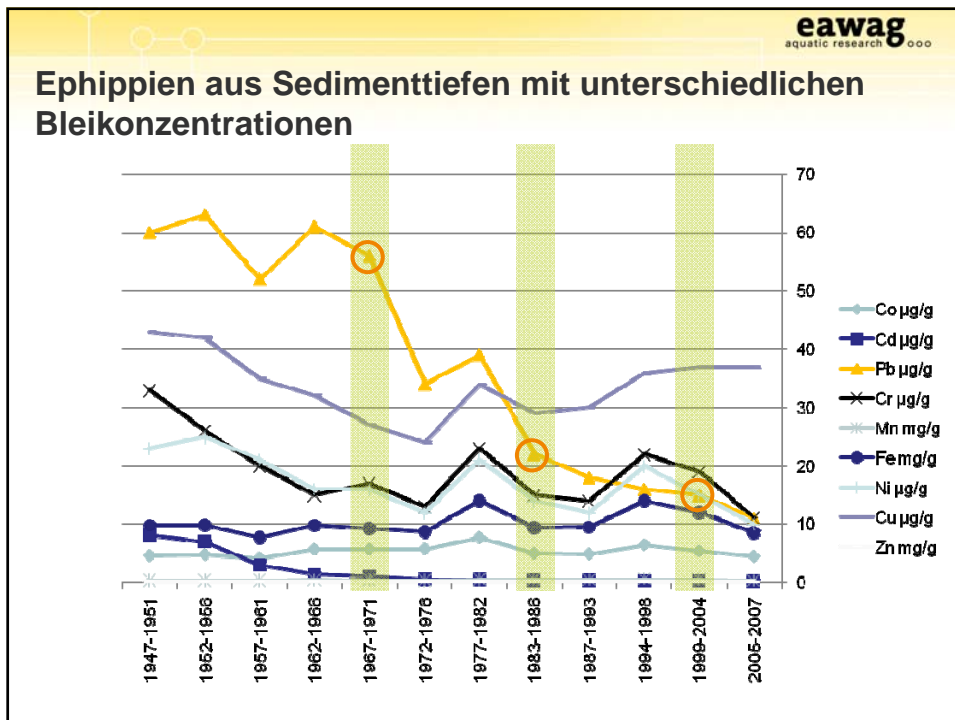


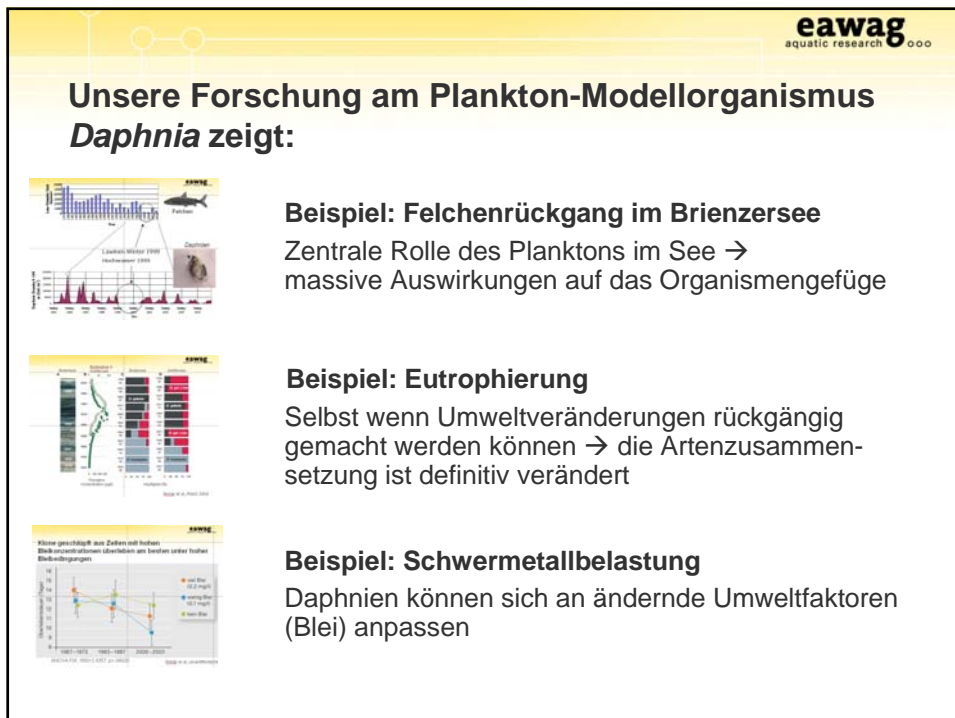
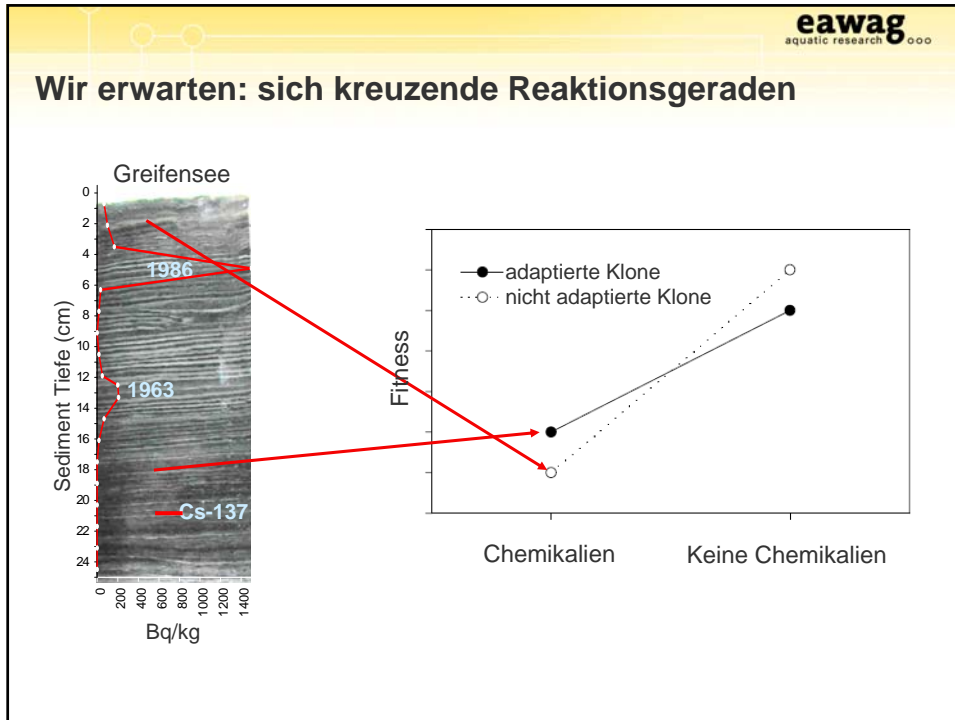
eawag
aquatic research ooc

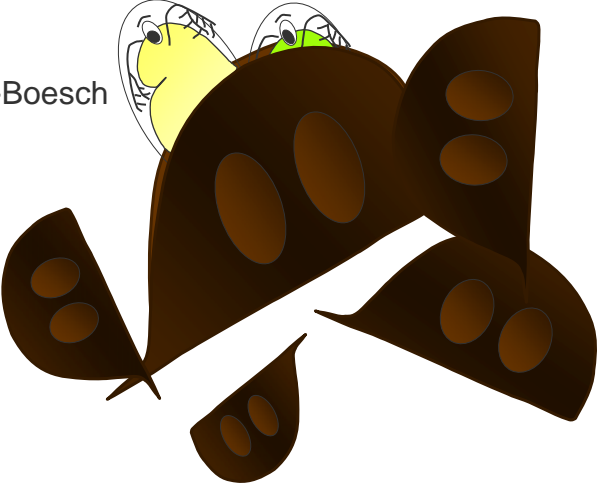
Chronische Toxizität auf Blei

3 (Tiefen) x 4–5 (Klone) x 3 (Pb Konzentrationen) x 5 (Replikate) = 210 experimentelle Einheiten

The diagram illustrates the experimental setup for chronic toxicity testing on lead. It features three groups of fish, each representing a different time period: 2000-2003, 1983-1987, and 1967-1973. A large green arrow indicates the transition from these fish to the experimental conditions. These conditions consist of three jars, each containing water with a specific lead concentration: 0.0 mg/L, 0.1 mg/L, and 0.2 mg/L. A magnified view of a daphnia is shown to the right, representing the organism used in the experiment.







Nora Brede
Christian Rellstab
Justyna Wolinska
Christine Dambone-Boesch
Regula Illi
Richard Illi
Esther Keller
Nadja Tschopp
Mike Sturm
Laura Sigg
Patrick Turko
Nelson Hairston

FNSNF
SWISS NATIONAL SCIENCE FOUNDATION

eawag
aquatic research ooc