

# Identification of Groundwater Habitats Using Radon as a Tracer

**Floodplains harbor a complex network of aquatic habitats that are fed by surface water as well as ground water. With the help of the radon method, it is possible to identify habitats that are primarily influenced by ground water. In the “middle floodplain” of Valle di Blenio, we were able to distinguish three types of ground water by determining radon along with sulfate concentrations. Each type of ground water is characterized by a different proportion of freshly-infiltrated surface water.**

Floodplains are sections of a stream system that are periodically flooded [1]. They are often found in gravel deposits along valley floors and have a characteristic plant and wildlife community, depending on the duration and frequency of flooding events. In floodplains, there is an intense exchange between surface water and ground water; surface water can infiltrate into ground water and vice versa.

## Radon as a Tracer in Ground Water

Groundwater habitats in floodplains are characterized by varying mixing ratios of surface water and ground water and by variable residence times of the mixed water [1]. Using the naturally occurring tracer radon, we can estimate this mixing proportion. Ground water naturally contains the radioactive noble gas radon (isotope Rn-222, referred to as Rn; see box) in detectable concentrations. Surface water, in contrast,

contains virtually no Rn, since it is released as gas into the atmosphere. Surface water that has freshly infiltrated to the subsurface will take up Rn and reach a steady-state concentration after approximately 15 days (Fig. 2) [2].

## Groundwater Influence in the Floodplains of Valle di Blenio

An EAWAG case study in the “middle floodplain” of Valle di Blenio (Acquarossa – Ponto Valentino, Canton Ticino; Fig. 1) aimed at determining the extent to which aquatic habitats in floodplains are influenced by ground water. Part of the middle floodplain is fed by hillslope water [3]. Hillslope water is ground water that flows from the valley sides towards the valley bottom and emerges in the floodplain as springs. Such springs, for example, can be found in the gravel deposits associated with the tributary Uregn. Additionally, there are springs and groundwater upwellings along the stream bed and banks of the Brenno that are fed by valley floor ground water. A relatively high proportion of freshly infiltrated surface water characterizes this ground water.

Nine sites in the middle floodplain were sampled on three days (July and October 1999, April 2000). At these sites, groundwater samples were pumped from depths of up to 10 m. For comparison, water from two springs of the sulfate-rich Trias formation and surface water from the tributary Uregn and the main channel of the Brenno was sampled (Fig. 1). Radon concentrations in the water samples were immediately measured in the field with a semiconductor detector.

## Three Types of Ground Water

Measured Rn concentrations were between 5 and 45 Bq/l (unit Bq; see box). As expected, the surface water from the Brenno and the Uregn contained virtually no Rn. The water from the two triassic springs, on the other hand, showed high Rn concentrations (>33 Bq/l), reflecting the fact that this is older, unmixed ground water. The

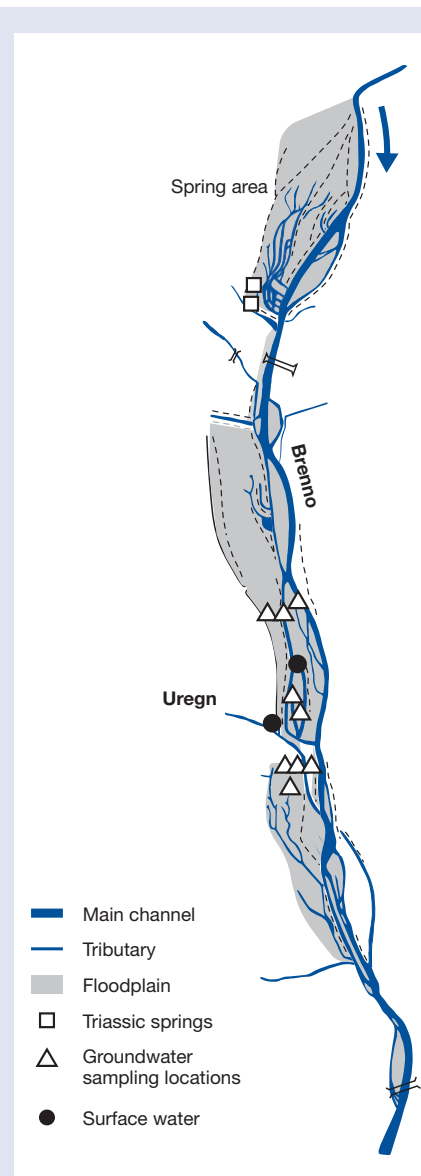


Fig. 1: Map of the middle floodplain of the Valle di Blenio (Canton Ticino), with sampling locations.

samples from the 9 groundwater sites contained mixed water with Rn concentrations between 5 and 33 Bq/l. Because of the wide range of Rn concentrations found in the mixed water samples, no clear pattern could be determined. In some sampling locations, the Rn concentration changed between sampling dates. The additional determination of sulfate ( $\text{SO}_4^{2-}$ ) concentrations can give us a clearer picture of whether different types of ground water are present.

The water of the Brenno is known for relatively high  $\text{SO}_4^{2-}$  concentrations. The sulfate is generated by the dissolution of gypsum and anhydrite rocks of the Trias formation in the upper parts of the watershed [4, 5]. Sulfate concentrations were, in fact, between 1 and 2.5 mmol/l for most of the water samples. Groundwater samples and water samples from the Uregn, on the other hand, contained only little  $\text{SO}_4^{2-}$  (<1 mmol/l).



The "middle floodplain" of Valle di Blenio, Canton Ticino.

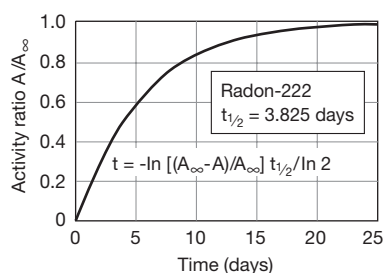


Fig. 2: Equation describing the increase in Rn concentration over time: after 15 days (approximately 4 half-lives,  $t_{1/2}$ ) 94% of the steady-state concentration ( $A_{\infty}$ ) is reached. Solving this equation for measured Rn concentrations (A) allows us to calculate activity ratios  $A/A_{\infty}$  and, therefore, residence times for the groundwater samples.

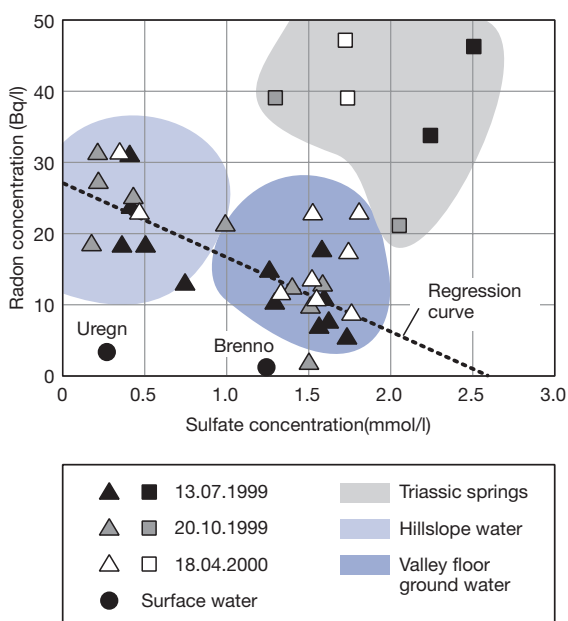


Fig. 3: Determination of groundwater types based on Rn and sulfate. Triangles: groundwater samples; squares: samples from triassic springs.

- Light blue area: relatively old mixed water with low proportion of surface water and high proportion of ground water (11 samples from 4 locations).
- Dark blue area: relatively young mixed water with high proportion of surface water and low proportion of ground water (18 samples from 8 locations).

Regression curve for these 29 samples:  $y = -9.5x + 27$ ;  $r = -0.68$ .

- Gray area: older, unmixed ground water from the triassic springs (6 samples from 2 locations).

These results illustrate how Rn concentrations, in this case in combination with  $\text{SO}_4^{2-}$  concentrations, allow us to determine mixing ratios and the age of ground water. Depending on the quality of the ground water, we can expect different subsurface habitats. In addition to the hydrological aspects described in this article, a comprehensive characterization of groundwater habitats must include detailed biological and geological investigations.



Eduard Hoehn, hydrologist and research scientist in the department "Water Resources and Drinking Water" and leader of the group "Wetlands" in the interdisciplinary project "Eco-electricity". Research area: Exchange between ground water and surface water, groundwater contamination, tracer methods.

Co-authors: Tom Gonser, Doris Hohmann and Ruth Stierli

[1] Brunke M., Gonser T. (1997): The ecological significance of exchange processes between rivers and ground water, *Freshwater Biology* 37, 1–33.

[2] Hoehn E., von Gunten H.R. (1989): Radon in ground water – a tool to assess infiltration from surface waters to aquifers. *Water Resources and Research* 25, 1795–1803.

[3] Holocher J., Kipfer R., Matta V., Aeschbach-Hertig W., Beyerle U., Hofer M. Combined hydrochemical and isotopic investigations to determine the hydrological system of an alpine floodplain, Valle di Blenio, Switzerland. *Groundwater* 39 (6), 841–852.

[4] Mazor E., Vuataz F. (1990): Hydrology of a spring complex, studied by geochemical time-series data, Acquarossa, Switzerland. *Applied Geochemistry* 5, 563–569.

[5] Pastorelli S., Marini L., Hunziker J.C. (1999): Water chemistry and isotope composition of the Acquarossa thermal system, Ticino, Switzerland. *Geothermics* 28, 75–93.