



## New fish species discovered in the Bernese Oberland

September 13, 2018 | Sibylle Hunziker

Topics: Biodiversity | Ecosystems

**In Lakes Thun and Brienz, evolutionary biologists from Eawag and Bern University have discovered a new whitefish species. The species, provisionally named “Balchen2”, is clearly differentiated – morphologically, ecologically and genetically – from the five Lake Thun whitefish species previously described. The only lake known to harbour a higher number of whitefish species is the 200 times larger Russian Lake Onega.**

Whitefish are important both ecologically and commercially for the prealpine lakes – and are thus also of interest to researchers. Whitefish diversity in Switzerland and neighbouring regions is therefore being investigated as part of a long-term project conducted by a group of evolutionary and fish biologists led by Ole Seehausen at Eawag and Bern University.

### Sought – and found

In “Projet Lac” – a systematic inventory of fish populations covering 32 prealpine lakes from 2010 to 2017 – researchers were intrigued by the diversity of whitefish found in the lakes of the Bernese Oberland. Doctoral student Carmela Dönz subsequently studied genetic data from over 2000 captured whitefish, together with historical records and information from commercial fishermen; also taken into account were genetic studies carried out by David Bittner using specimens from earlier cantonal monitoring programmes (1950–1975).

This research revealed the existence of another whitefish species in Lakes Thun and Brienz, which, while showing certain similarities (genetically, morphologically and in spawning behaviour) to the previously described “Balchen” and “Felchen”, is clearly distinct from both of these species.

Provisionally designated as “Balchen2”, the new species is now being scientifically described – and the taxonomy of Bernese Oberland whitefish is being reviewed – as part of an ongoing whitefish speciation project at Eawag and Bern University.

With its new total of six species, the whitefish species richness of Lake Thun is among the highest worldwide: only in Lake Onega (in northwestern Russia) has a larger number of whitefish species (nine) been documented, although here it is not clear whether they all actually occur together or are distributed across various geographical areas of the huge lake. Six whitefish species have also been identified in Lake Lucerne; however, the “Alpnacherfelchen” is essentially confined to the southern arm of the lake (Alpnachersee).

But how did such a wide variety of whitefish species develop in the prealpine lakes?

### **Opportunity makes a species**

At the end of the last ice age (about 15,000 years ago), the ancestors of today’s whitefish colonized the prealpine lakes that emerged as the glaciers retreated. They occupied all the available niches – some spawning in deeper waters, others near the surface, others again at intermediate depths.

Dönz explains: “By becoming specialized to different habitats, the fish were able to exploit the lakes’ resources more efficiently. That applies not just to water depth but also to other environmental conditions.”

Differences in morphological features thus arose – for example, in the gill rakers (bony structures projecting from the gill arch): open-water (pelagic) specialists developed large numbers of gill rakers, enabling them to filter zooplankton from the water; in contrast, deep-water whitefish, feeding on benthic invertebrates (larvae and snails), developed a low number of robust gill rakers and a different mouth shape.

As the best adapted individuals in each ecological niche reproduced most successfully, the differences were also reflected at the genetic level. And as the various groups spawned at different depths, thus promoting genetic differentiation, new species evolved over time. Conditions for speciation were particularly favourable in the deep prealpine lakes.

### **Five specialists ...**

Three of the whitefish species which evolved in this way in the large lakes of the Bernese Oberland were already familiar: the small “autumn brienzig”, which feeds on zooplankton in open water and generally spawns in deeper waters; the large, benthic-feeding “Balchen”, which spawns in shallow littoral waters; and the “Felchen”, which is similar to the “brienzig” in many respects but is larger and normally spawns later in the year. In Lake Thun, these species are joined by the “kropfer”, which is a benthic feeder like the “Balchen”, but lives in deep waters, and the surface-dwelling “Albock”, whose origins are, however, quite different.

### **... and a new arrival**

The new study confirmed previous indications that the Lake Thun whitefish now known as “Albock” is a different species from the historical “Albock” described as the most important Lake Thun whitefish species in written sources from the 15th to the early 20th century. Today’s “Albock” derives from whitefish introduced from Lake Constance in the 1930s, as is confirmed by genetic evidence and historical sources. This species only became commercially important after a period of anthropogenic eutrophication – which was relatively mild in the Bernese Oberland lakes.

According to Carmela Dönz, “It’s possible that this new species benefited from ecological changes



```

type{color:#569CD6;padding-right:4px}.extbase-debugger-center .extbase-debug-
unregistered{background-color:#dce1e8}.extbase-debugger-center .extbase-debug-
filtered,.extbase-debugger-center .extbase-debug-proxy,.extbase-debugger-center .extbase-
debug-ptype,.extbase-debugger-center .extbase-debug-visibility,.extbase-debugger-center
.extbase-debug-scope{color:#fff;font-size:10px;line-height:12px;padding:2px 4px;margin-
right:2px;position:relative;top:-1px}.extbase-debugger-center .extbase-debug-
scope{background-color:#497AA2}.extbase-debugger-center .extbase-debug-
ptype{background-color:#698747}.extbase-debugger-center .extbase-debug-
visibility{background-color:#698747}.extbase-debugger-center .extbase-debug-
dirty{background-color:#FFFFFFB6}.extbase-debugger-center .extbase-debug-
filtered{background-color:#4F4F4F}.extbase-debugger-center .extbase-debug-seeabove{text-
decoration:none;font-style:italic}.extbase-debugger-center .extbase-debug-
property{color:#f1f1f1}.extbase-debugger-center .extbase-debug-
closure{color:#9BA223;}Extbase Variable Dumparray(2 items) publications => '17421' (5
chars) libraryUrl => " (0 chars) Extbase Variable Dumparray(1 item) 0 =>
Snowflake\Publications\Domain\Model\Publicationprototypepersistent entity (uid=17421,
pid=124) originalId => protected17421 (integer) authors =>
protected'Doenz,&nbsp;C.&nbsp;J.; Bittner,&nbsp;D.; Vonlanthen,&nbsp;P.; Wagner,&nbsp;
C.&nbsp;E.; Seehausen,&nbsp;O.' (106 chars) title => protected'Rapid buildup of
sympatric species diversity in Alpine whitefish' (64 chars) journal => protected'Ecology and
Evolution' (21 chars) year => protected2018 (integer) volume => protected8 (integer) issue =>
protected'18' (2 chars) startpage => protected'9398' (4 chars) otherpage => protected'9412' (4
chars) categories => protected'adaptive radiation; Coregonus; evolutionary community
assembly; niche partiti-
oning; speciation; stocking' (104 chars) description => protected'Adaptive radiations in
postglacial fish offer excellent settings to study th
e evolutionary mechanisms involved in the rapid buildup of sympatric species
diversity from a single lineage. Here, we address this by exploring the gen-
etic and ecological structure of the largest Alpine whitefish radiation know-
n, that of Lakes Brienz and Thun, using microsatellite data of more than 200
0 whitefish caught during extensive species-targeted and habitat-randomized
fishing campaigns. We find six strongly genetically and ecologically differ-
entiated species, four of which occur in both lakes, and one of which was pre-
viously unknown. These four exhibit clines of genetic differentiation that a-
re paralleled in clines of eco-morphological and reproductive niche differen-
tiation, consistent with models of sympatric ecological speciation along env-
ironmental gradients. In Lake Thun, we find two additional species, a profun-
dal specialist and a species introduced in the 1930s from another Alpine whi-
tefish radiation. Strong genetic differentiation between this introduced spe-
cies and all native species of Lake Thun suggests that reproductive isolatio-
n can evolve among allopatric whitefish species within 15,000 years and pers-
ist in secondary sympatry. Consistent with speciation theory, we find strong
er correlations between genetic and ecological differentiation for sympatric-
ally than for allopatrically evolved species.' (1413 chars) serialnumber =>
protected'2045-7758' (9 chars) doi => protected'10.1002/ece3.4375' (17 chars) uid =>
protected17421 (integer) _localizedUid => protected17421 (integer)modified _languageUid =>
protectedNULL _versionedUid => protected17421 (integer)modified pid => protected124
(integer) Doenz, C. J.; Bittner, D.; Vonlanthen, P.; Wagner, C. E.; Seehausen, O. (2018) Rapid

```

buildup of sympatric species diversity in Alpine whitefish, *Ecology and Evolution*, 8(18), 9398-9412, [doi:10.1002/ece3.4375](https://doi.org/10.1002/ece3.4375), [Institutional Repository](#)

### Photos



*The newly described Lake Thun whitefish species, provisionally named "Balchen2"*



*Biologist Carmela Dönz conducting fieldwork as part of “Projet Lac”*

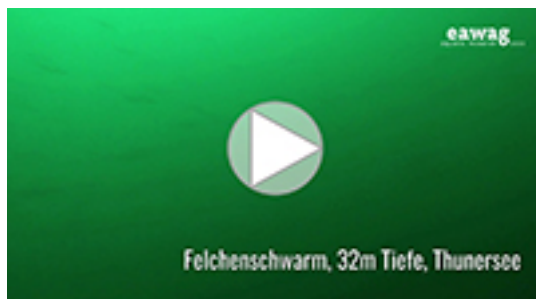


*Whitefish systematically captured in the course of “Projet Lac”*



*Specimens are measured, weighed, photographed and described as part of “Projet Lac” – the first systematic inventory of fish populations in Swiss lakes.*

## **Video clip (1 min)**



A large shoal of whitefish seen at a depth of around 30 metres.

## Contact



**Ole Seehausen**

Tel. +41 58 765 2121

[ole.seehausen@eawag.ch](mailto:ole.seehausen@eawag.ch)



**Andri Bryner**

Media officer

Tel. +41 58 765 5104

[andri.bryner@eawag.ch](mailto:andri.bryner@eawag.ch)

<https://www.eawag.ch/en/info/portal/news/news-archive/archive-detail/new-fish-species-discovered-in-the-bernese-oberland>