

## Millions of people drink groundwater contaminated with arsenic

May 21, 2020 | Stephanie Schnydrig

Topics: Drinking Water | Pollutants | Water & Development | Society

**Many experts describe the health effects of drinking water contaminated with toxic concentrations of arsenic as the greatest mass poisoning in human history. A risk model developed by Eawag researcher Joel Podgorski now shows that up to 220 million people worldwide could be affected.**

Today, one third of the world's population obtains its drinking water and water for irrigation from groundwater reserves. Global population growth and water scarcity due to climate change mean that the pressure on this resource is continually increasing. However, many wells are contaminated with naturally occurring arsenic. When ingested over a long period of time, the metalloid can cause liver, kidney and heart damage as well as cancer.

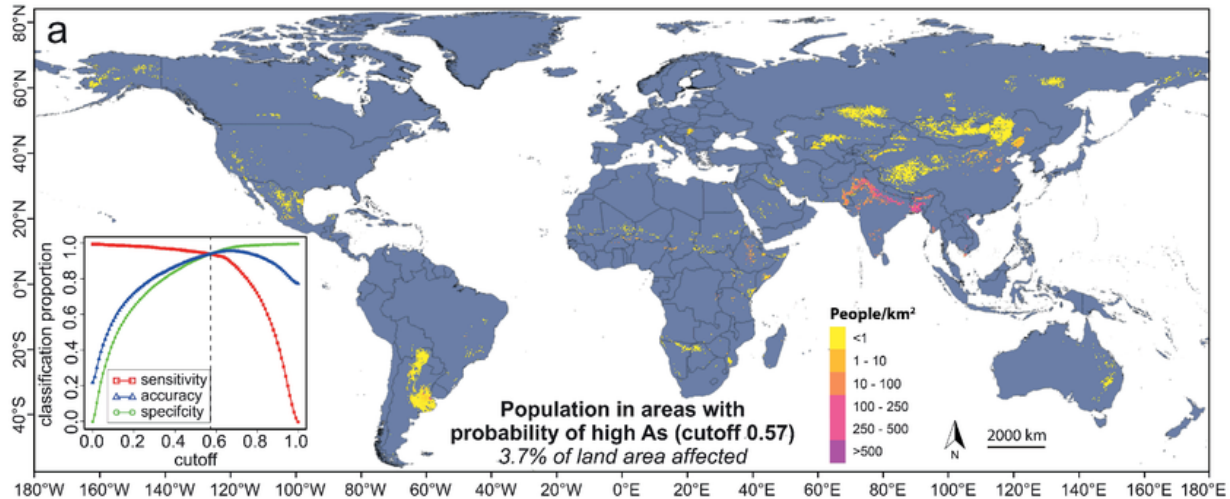
Michael Berg and his team from Eawag's Water Resources and Drinking Water Department have already carried out various studies to determine the extent of arsenic-contaminated groundwater aquifers: Firstly, the researchers found toxic arsenic concentrations in groundwater during field work in Cambodia, Vietnam, and the Amazon region. They then developed regional arsenic risk maps for China, Pakistan and South East Asia.

### Most detailed global risk map

Now researchers led by Eawag geophysicist Joel Podgorski have developed a global risk model. This is based on a self-learning algorithm that is fed with the latest data on geology, soil properties, climate and around 200,000 specific arsenic concentration measurements. "The result is the most accurate and detailed risk map to date on the global scale of groundwater arsenic pollution," explains Podgorski, lead

author of the study. It has now been published in the renowned journal “Science” and was co-financed by the Swiss Agency for Cooperation and Development (SDC).

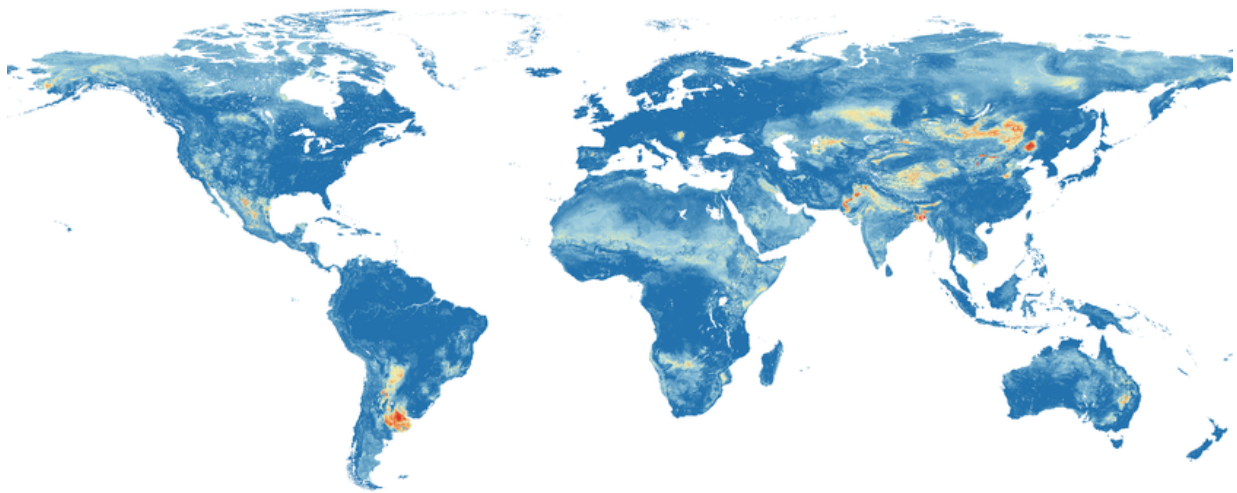
In addition to the geological parameters, figures on population density and statistics on groundwater use are also included in the risk model. The researchers were thus able to calculate that between 94 and 220 million people are potentially affected by arsenic contamination in drinking water.



The risk map illustrates how many people in which regions are potentially affected by high arsenic levels in groundwater. (Graphic: Podgorski et al., 2020)

While some hotspots have been known for a long time, such as parts of South and South East Asia, they also identified previously unknown areas. For example, the hazard map shows parts of Central Asia, the Sahel and other regions of Africa as potentially arsenic contaminated regions.

However, the models have too low a resolution to determine the arsenic contamination of individual groundwater wells. “These maps serve as a basis for determining where targeted arsenic tests should be conducted,” says Michael Berg.



Global hazard map of groundwater arsenic pollution: Red indicates a high probability, dark blue a low probability, that more than 10 micrograms per litre of arsenic are present in groundwater. (Graphic: Podgorski et al., 2020)

#### Online GIS-Platform GAP: Facilitating local research work

The preparation of arsenic hazard maps is complex and often difficult for the competent authorities to manage on their own in developing countries where technical and financial resources are scarce. With the financial support of the Swiss Agency for Cooperation and Development (SDC), Eawag, together with Ernst Basler + Partner and Hydrosolutions, has developed an online solution that is available free of charge to all interested parties: the Groundwater Assessment Platform GAP ([www.gapmaps.org](http://www.gapmaps.org)). This gives experts from all over the world the opportunity to visualise their own data with relatively little effort and to create their own risk maps of arsenic and fluoride contamination.

Cover picture: Podgorski et al. 2020

#### Original publication

Joel Podgorski and Michael Berg (2020). [Global threat of arsenic in groundwater](#). Science.

#### Original data

Datasets from this study are available as Open Research Data:  
<https://doi.org/10.25678/0001ZT>

#### Contact



**Joel Podgorski**

Tel. +41 58 765 5760

[joel.podgorski@eawag.ch](mailto:joel.podgorski@eawag.ch)



**Michael Berg**

Deputy Head of Department

Tel. +41 58 765 5078

[michael.berg@eawag.ch](mailto:michael.berg@eawag.ch)

<https://www.eawag.ch/en/info/portal/news/news-archive/archive-detail/millions-of-people-drink-groundwater-contaminated-with-arsenic>