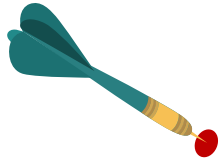


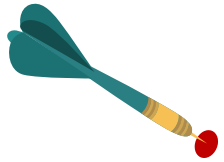
Part 1 – Using Diagnostics

1.8 Qualities & Quantities of Faecal Sludge

Inclusive urban sanitation - Capacity development for consultants



Recognise the different characteristics between wastewater and faecal sludge



Identify the implications on how, what and where to collect data to estimate qualities and quantities of faecal sludge for treatment.

Qualities and quantities of faecal sludge

- Why faecal sludge is different from wastewater
- How, what and where to collect and analyse data to estimate what is delivered to a treatment plant

Visualisation of collected data

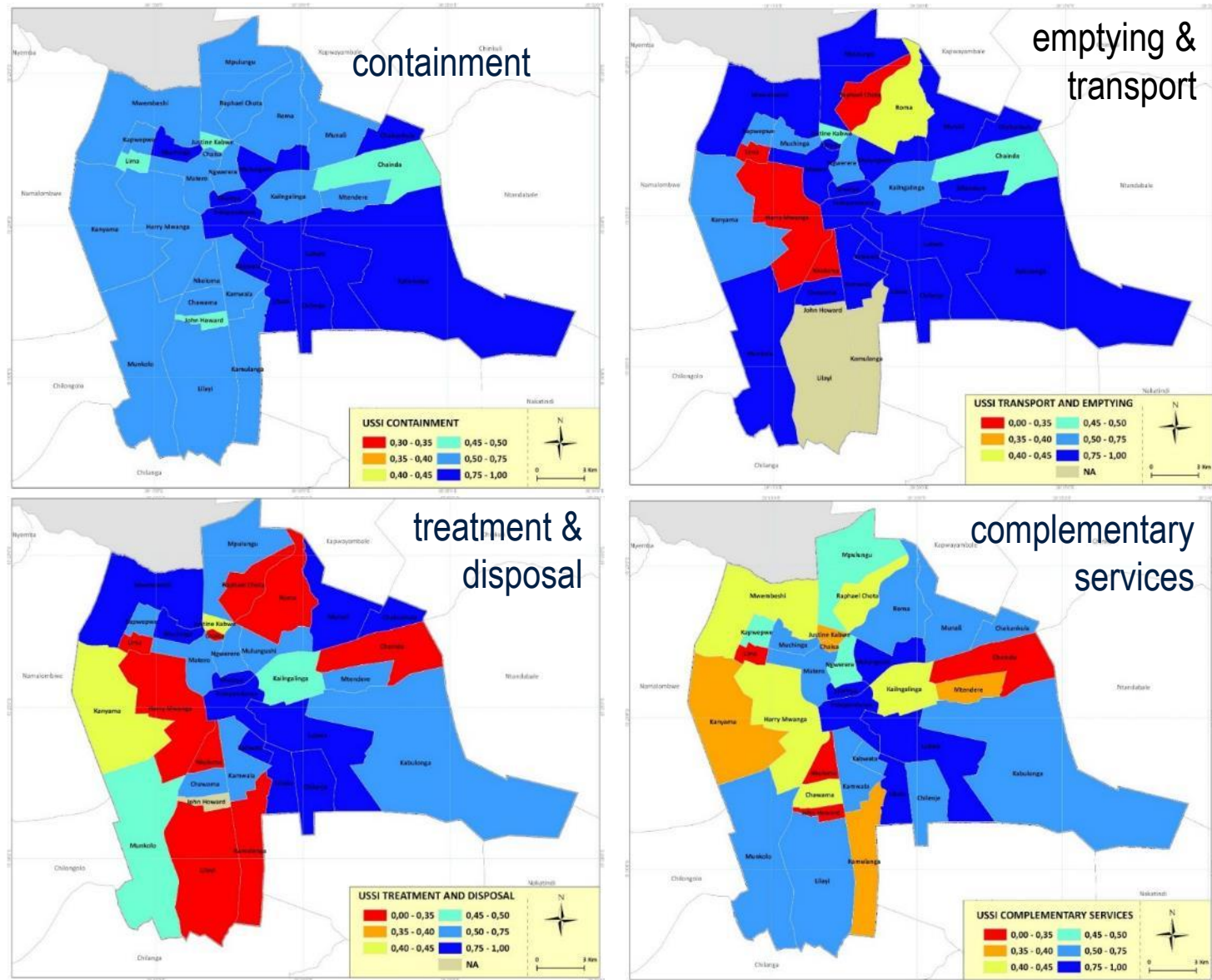
- How collected data can be used to produce an Urban Sanitation Status Index and spatial prioritisation maps

“SPA-DET” Approach for Quantities and Qualities (Q&Qs) of Faecal Sludge

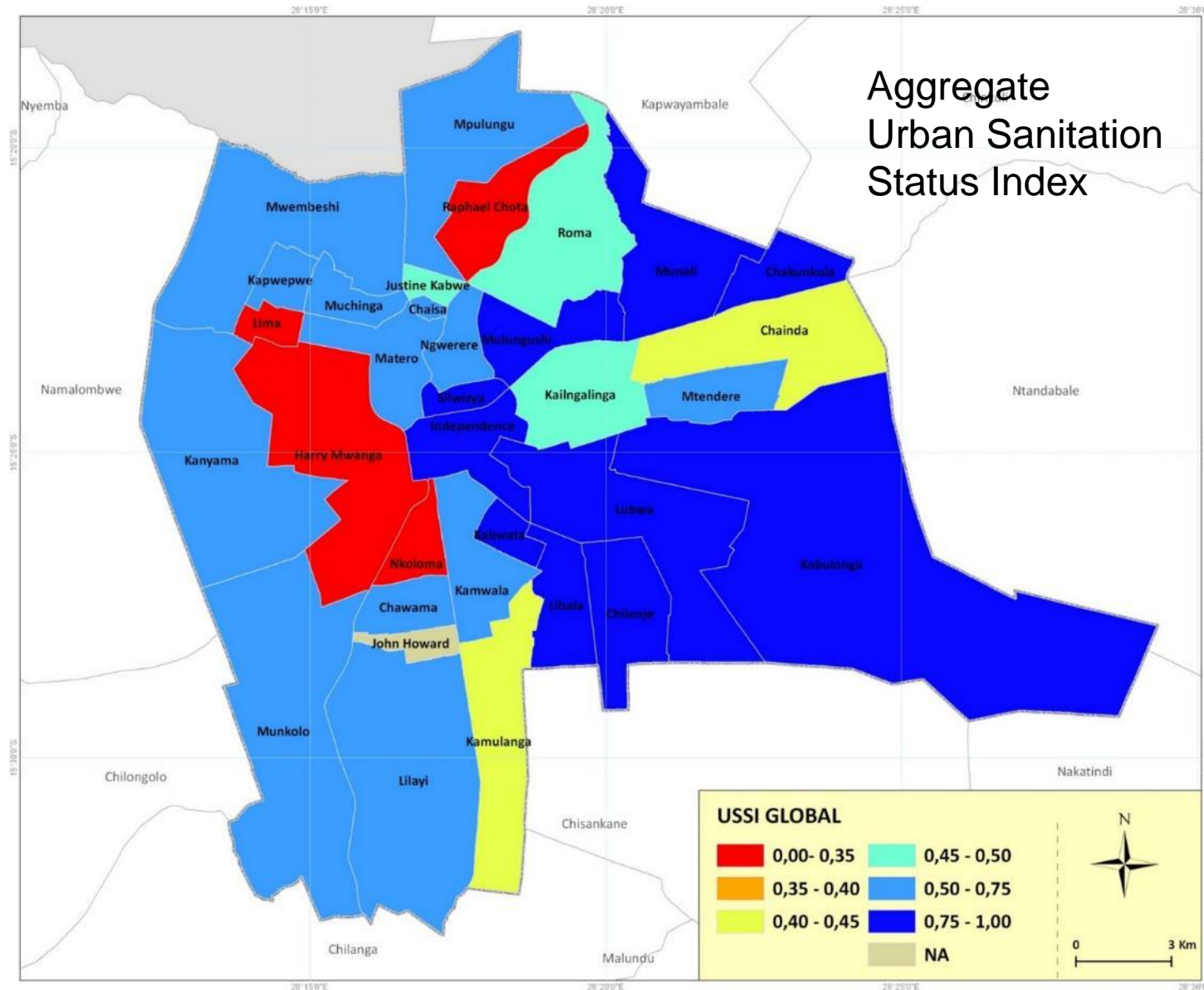
Inclusive Urban Sanitation – Capacity Development for Consultants

Dr. Linda Strande

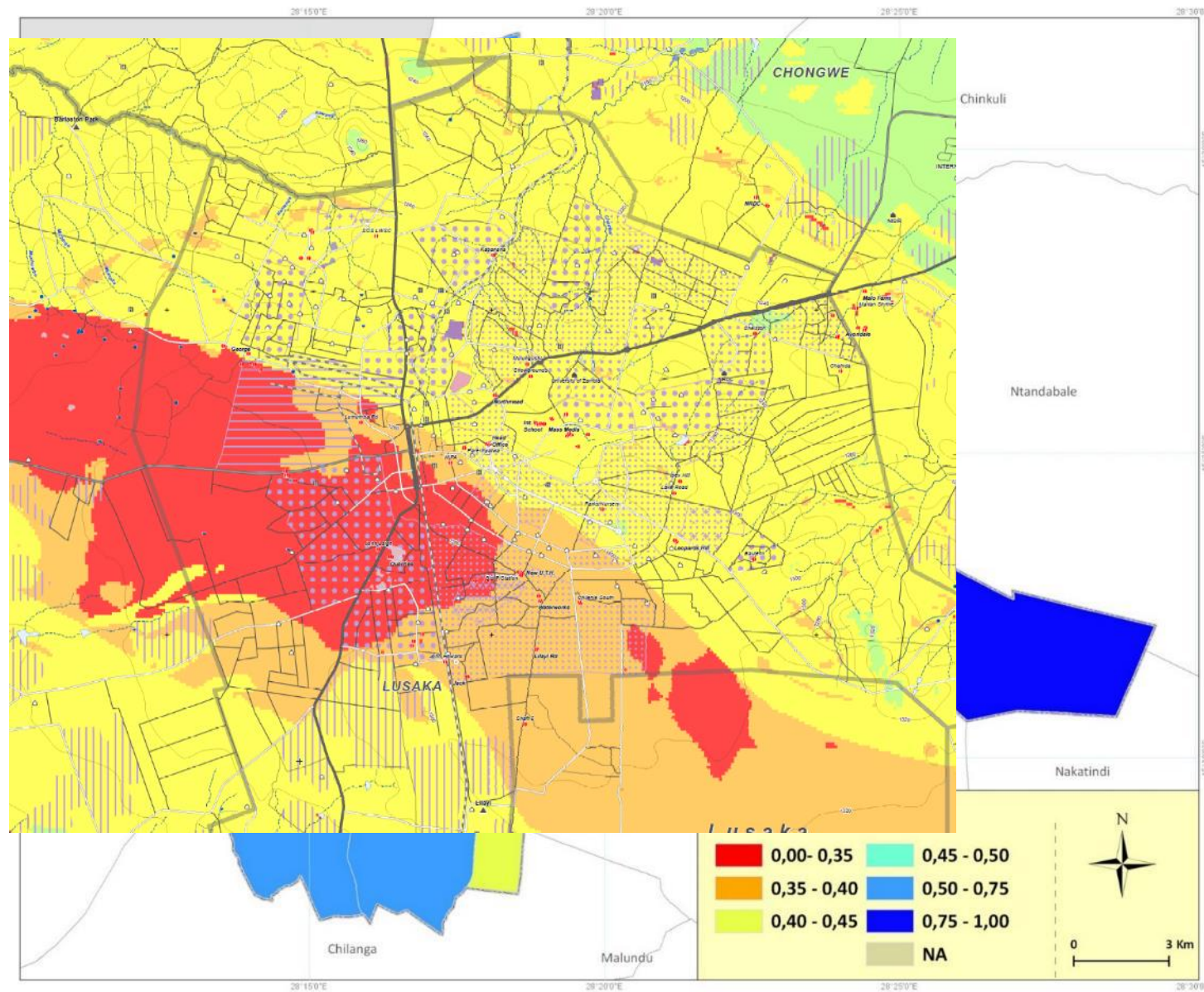
Spatial variation & prioritisation areas – Lusaka



Spatial variation & prioritisation areas – Lusaka



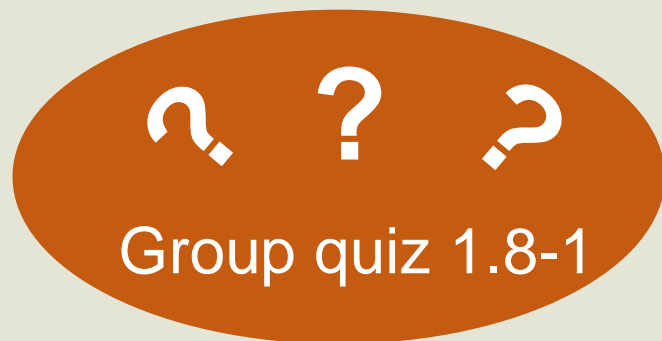
Spatial variation & prioritisation areas – Lusaka



.....



Faecal sludge characteristics review



Each table to discuss
and come to a
consensus.

Then, facilitator will
lead open discussion.



1. The quality of faecal sludge currently off-loaded at the treatment plant is the main criterion for the design and size of a faecal sludge treatment plant.
 - a. True
 - b. False
 - c. Maybe
2. A faecal sludge treatment plant can be sized based on the number of people using on-site sanitation and the average volume of the pit latrines and septic tanks.
 - a. True
 - b. False
 - c. Maybe

Summary

- Planning from evidence is essential because cities and people are complex and dynamic
- Predicting what is delivered to a treatment plant is needed for planning and managing solutions
- With adequate data you can create spatial prioritisation maps and an Urban Sanitation Status Index
- There are many effective, low-cost ways to gather evidence and collect data



- Urban Sanitation Status Index (on pendrive)
- Sandec videos and publications:
 - [Fecal sludge quantification and characterization](#)
 - [Laboratory Methods](#)