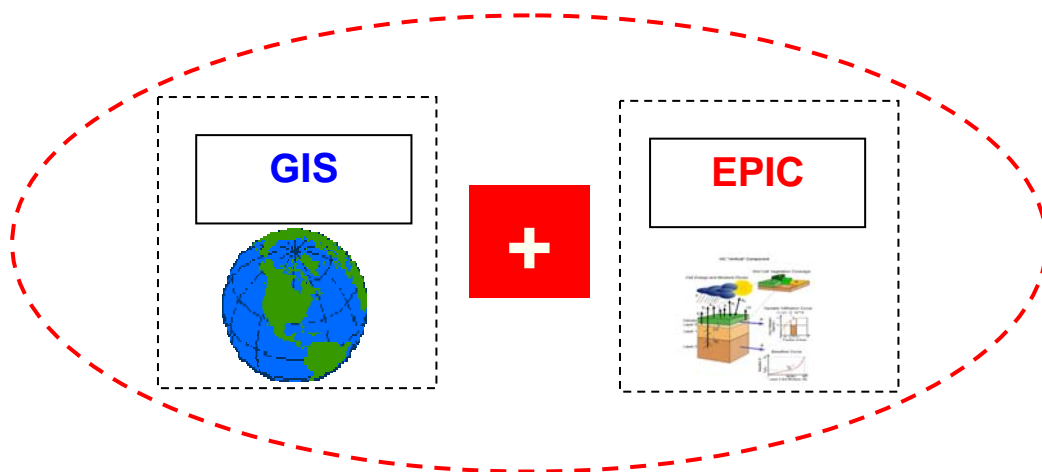


GIS-based Environmental Policy Integrated Climate Model



User Manual

Version 1.0

January 2009

GEPIC User Manual

Contact

Dr. Junguo Liu
Swiss Federal Institute of Aquatic Science and Technology (Eawag)
Ueberlandstrasse 133, CH-8600
Duebendorf, Switzerland
Tel: +41-448235012
Fax: +41-448235375
Email: water21water@yahoo.com
junguo.liu@eawag.ch

Dr. Hong Yang,
Swiss Federal Institute of Aquatic Science and Technology (Eawag),
Ueberlandstrasse 133, CH-8600 Duebendorf, Switzerland,
Tel: 41-44-8235568, Fax: 41-44-8235375
Email: hong.yang@eawag.ch

Model objective: to simulate spatial and temporal dynamics of the major processes (e.g. crop growth, hydrological cycle, nutrient cycle, carbon cycle, erosion, climate change impact) of the soil-crop-atmosphere-management system.

Citation: Users should cite the following publications for the application of the GEPIC model:

Liu J., Jimmy R. Williams, Zehnder A.J.B., Yang H., 2007. GEPIC – modelling wheat yield and crop water productivity with high resolution on a global scale. *Agricultural Systems* 94 (2). pp 478-493.

Liu J., 2009. A GIS-based tool for modelling large-scale crop-water relations. *Environmental Modelling & Software* 24: 411-422.

* This User Manual (Version 1.0) is prepared by Dr. Junguo Liu and Mr. Franklin Uvere.

Content

1. Overview.....	1
2. Installation and preparation.....	2
2.1 Installation.....	2
2.2 Preparation	2
3. Framework and file structure	3
3.1 Framework	3
3.2 File structure	5
4. Input/Output files	8
4.1 Most important input data.....	8
4.2 Format of input files.....	8
4.3 Format of output files.....	11
4.4 How to read output variables from the annual output files?	14
5. Step by step to use GEPIC	15
Example	15
6. Advanced knowledge and functions	36
6.1 How to add a crop in GEPIC	36
6.2 How to add an output variable for map generation in GEPIC	36
6.3 How to install and use Hawth's Analysis Tool in ArcGIS.....	37
7. Publications related to GEPIC	39

1. Overview

GEPIC is a GIS-based agroecosystem model integrating a bio-physical EPIC model (Environmental Policy Integrated Climate) with a Geographic Information System (GIS). The GEPIC model can be used to simulate the spatial and temporal dynamics of the major processes of the soil–crop–atmosphere–management system.

The first version of the GEPIC model was developed between 2004 and 2005 to serve for a Swiss National Science Foundation funded project “Water Scarcity – Its Measurement and Implications for Virtual Water Import”. The model was developed to quantify crop yield and crop water use on a global scale with a spatial resolution of 30 arc-minutes (around 50 km by 50 km nearby the equator). Since the GEPIC model can potentially use all functions of EPIC, it has later been used to simulate impacts of climate change on crop production, green and blue water use assessments, effects of biofuel production on land and water resources, soil and water erosion etc. There are no strict classifications among different versions of the GEPIC model; hence, it is still marked as Version 1.0 so far.

The GEPIC model is developed and maintained by the Swiss Federal Institute of Aquatic Science and Technology (Eawag). It is a public domain program, and as such may be used and copied free of charge for non-commercial uses.

2. Installation and preparation

2.1 Installation

The installation process is very easy. You just need to **copy the folder *MyProject* and all files in this folder to your hard driver C: or D:**. Now you are done! Enjoy the GEPIC model.

2.2 Preparation

- Make sure **ArcGIS 9.1** (or higher version) is installed in your computer and working properly. A basic knowledge of ArcGIS is required to use the GEPIC Model.
- **How to start the GEPIC model:** Open *C:/MyProject/EPIC0509* folder (suppose you copy the folder *MyProject* to C: driver) and locate the file *GEPIC1.0.mxd*. Now you are starting the GEPIC model. Create a shortcut for this file on your desktop for later uses.
- **The core of the simulation is the EPIC model;** hence, a basic knowledge about the EPIC model is needed. The nature and format of the EPIC-required input, output and system files, as well as how to edit these files and/or create your own files, have been described in details in the *EPIC User Manual*.
- A **MONTHly to DAily WEather Convertor (MODAWEC)** has been developed to support GEPIC and help users to create daily weather data based on monthly weather data. When applying the MODAWEC model, please first study the *MODAWEC User Manual*.
- GEPIC only accepts raster datasets with data type of LONG (signed 32 bit) as input. When your raw raster datasets are not in this format, a **Hawths Analysis Tool for GIS** is frequently used to convert them to the LONG type. The *Hawths Analysis Tool* is a GIS extension. As to the installation and use of the Hawth's Analysis Tool for GIS, please refer to [6.3. How to install and use Hawth's Analysis Tool in ArcGIS](#)

3. Framework and file structure

3.1 Framework

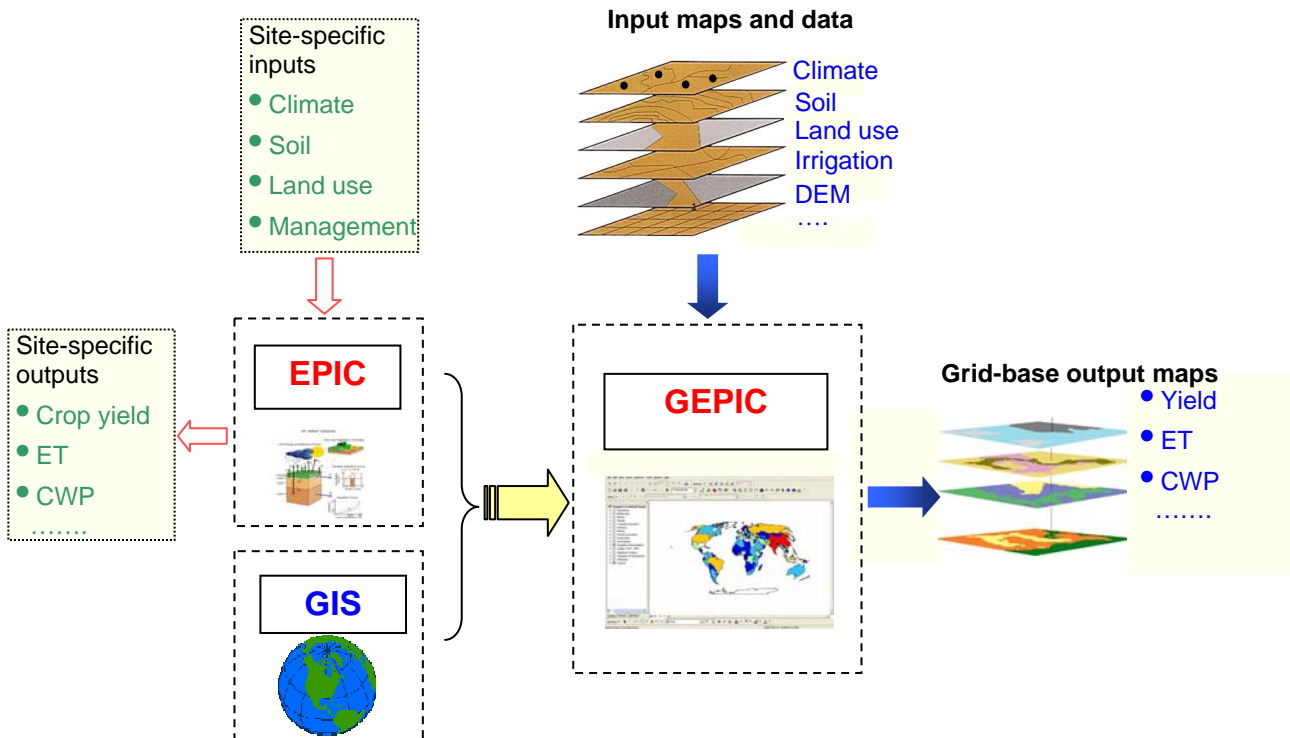


Figure 1. General idea of the GEPIC model

The general idea of the GEPIC model is expressed in Fig. 1. The EPIC model can simulate site-specific processes such as crop growth, hydrological cycle, N cycle, C cycle, climate change etc. By integrating EPIC with a GIS, the GEPIC model treats each grid cell as a site, and it simulates the above processes for all predefined grid cells with any spatial resolution.

A **loose coupling approach** is used to integrate EPIC with a GIS. This approach relies on transfer of data files between GIS and simulation models. With this approach, the GEPIC interface abstracts most required data from GIS raster maps, edits them to the EPIC required data format. These formatted data are transferred to the EPIC model. The simulation results of the EPIC model are transferred to the GEPIC interface to generate output maps.

The steps of the development of the GEPIC model are illustrated in Fig. 2. Input data are first added into GEPIC in terms of GIS raster datasets. Then, an “input data translation module” reads and writes input information to a “text input file” [*input.txt*]. This text input file is then used to generate specific “EPIC input files” with the help of a “UTIL” program (Universal Text Integration Language, or a data file editor that comes with the EPIC model). This process is achieved by writing command lines into a “batch file” [*Temp.cmd*]. By executing the batch file, GEPIC runs the EPIC model for each simulated grid cell. A set of “EPIC output files” [e.g. *EPIC_OUT.OUT*, *EPIC_OUT.ACY* etc] are generated. With an “output data translation module”, output variables are written into a series of “text output files” [e.g. *1999.txt*, *2000.txt*, *2001.txt* etc], which are used to generate “GIS output maps”.

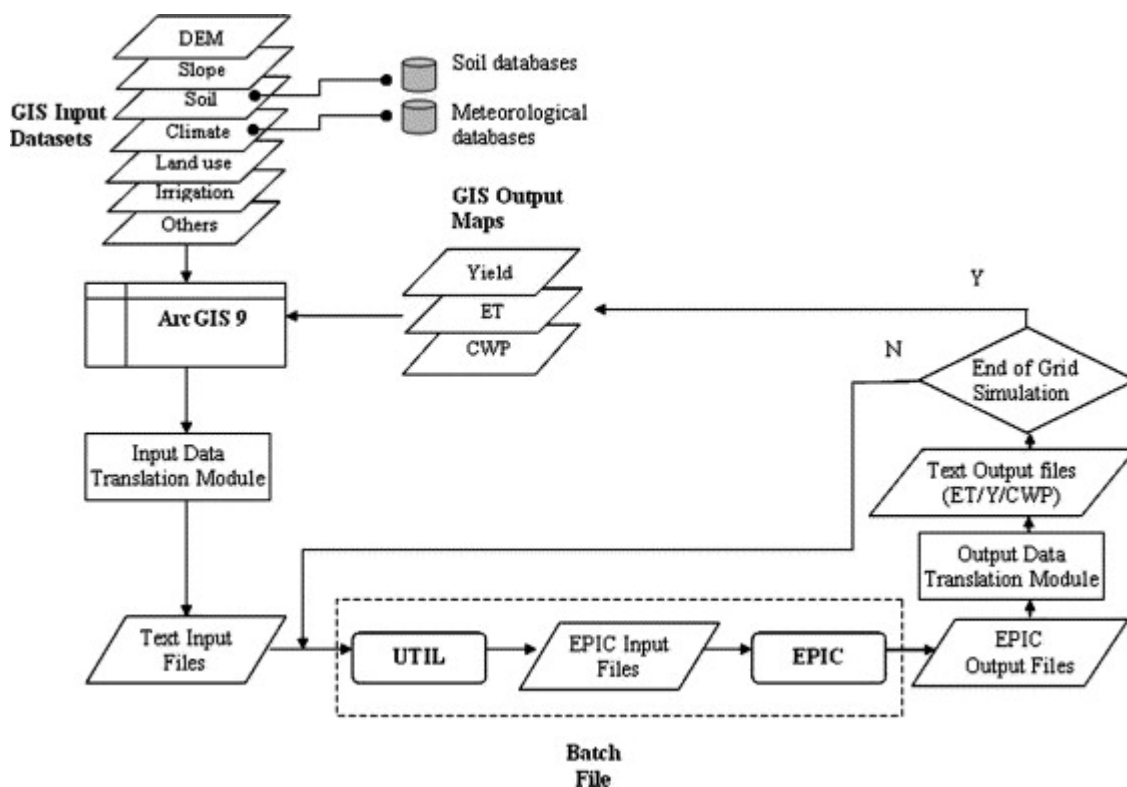


Figure 2. Schematic representation of the integration of EPIC with GIS

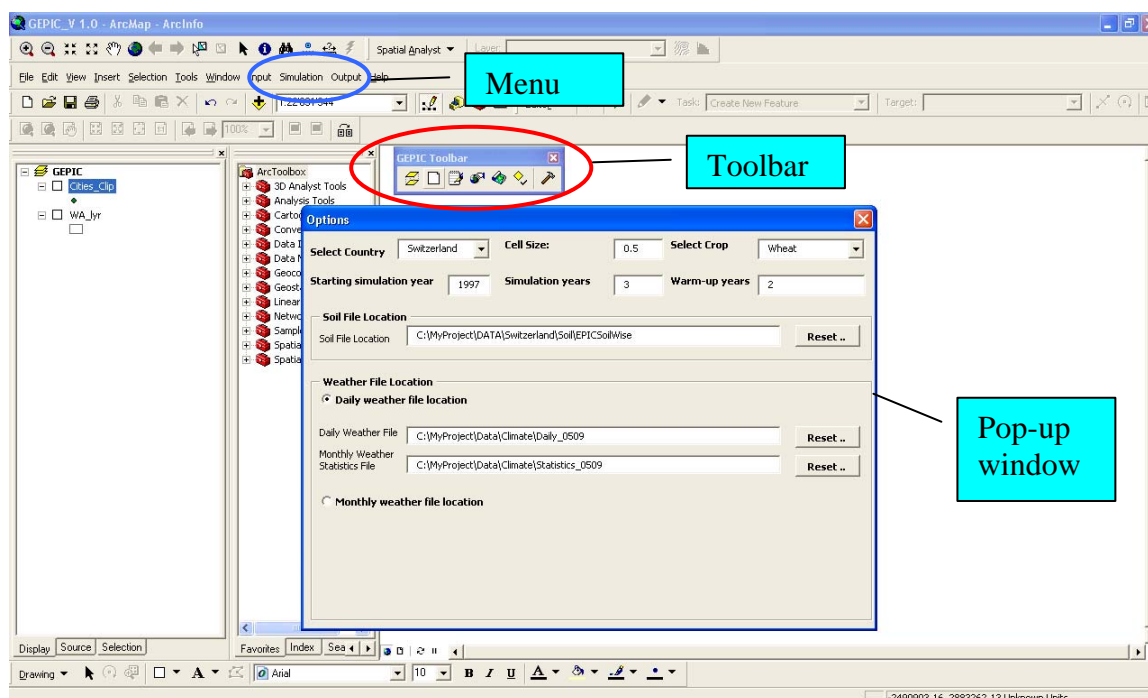


Figure 3. Interface of the GEPIEC model

The GEPIEC software comprises three components. The most obvious component is the proprietary GIS, which is a standard ArcMap window in ArcGIS 9.1. The least obvious component is the EPIC model, which is the core of all simulations. The third component is the GEPIEC interface (see Fig. 3), which links GIS and EPIC. The interface contains toolbars and menus. The toolbars provide functional buttons to (1) locate raster input data

sets; (2) select the simulated area and crops; (3) specify spatial resolution; and (4) set the locations of the EPIC file, and input and output files. It further provides buttons to (1) edit inputs into EPIC required input files; (2) run the EPIC model; and (3) to generate output maps. The menu has submenus, which allow users to perform the same tasks as the toolbar.

The ESRI's GIS software **ArcGIS9.1** was selected to develop the GEPIC model. ArcGIS is used as an application framework, input editor, and map displayer. As an application framework, ArcGIS provides the main programming language VBA to design the interface of GEPIC, and to design programs for input data access, text output data generation, and output map creation. As an input editor, ArcGIS is used to convert vector input data into raster data, which are the main input format. One typical example is the climate data. Daily climate data are often available for various stations, while the code of each station is presented as attributed point data. The point data is converted into raster data with a method of Thiessen Polygons, with which the daily climate data from the closest climate station is used as a representative for a grid cell. As a map displayer, ArcGIS can be used to visualize the GIS data (e.g. vector or raster input data; raster output data etc).

3.2 File structure

As a first step to start the model, users need to know (1) the location of the GEPIC software; (2) the file structure; (3) the location of the executable file.

A. Location of the GEPIC software

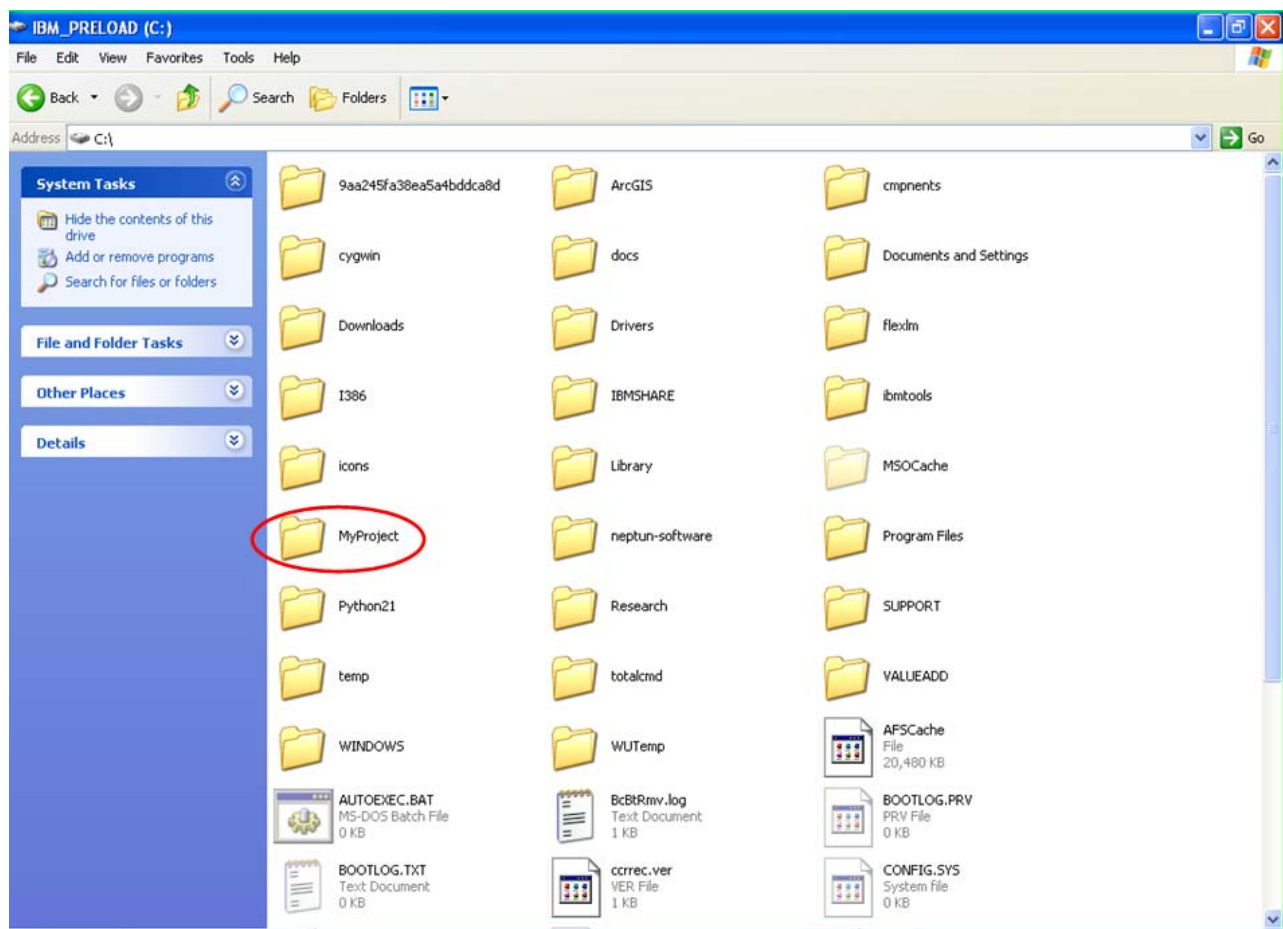
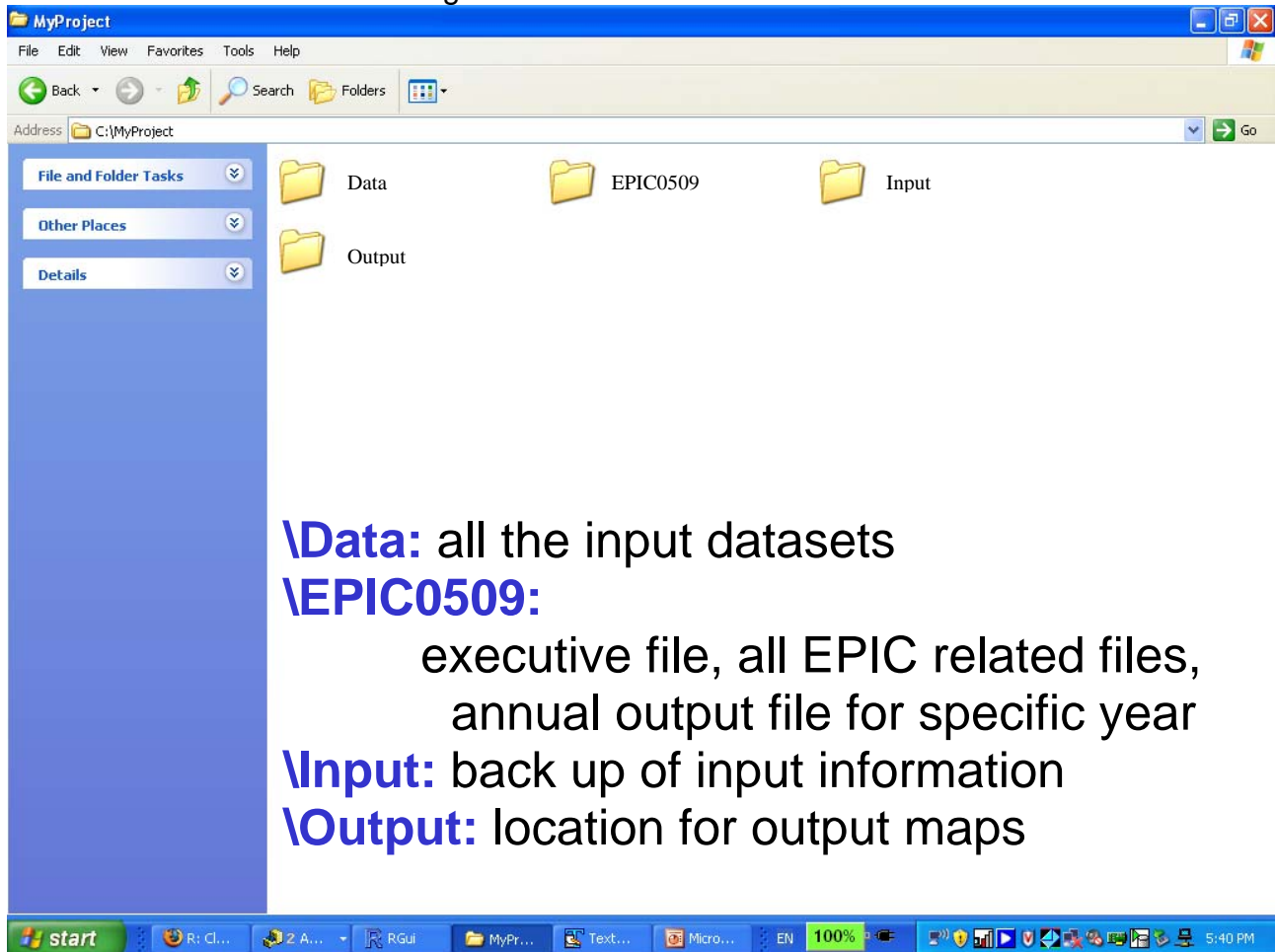


Figure 4. Location of GEPIC software

B. File structure

The file structure is shown in Fig. 5.



\Data: all the input datasets

\EPIC0509:

executive file, all EPIC related files,
annual output file for specific year

\Input: back up of input information

\Output: location for output maps

Figure 5. The file structure of GEPIC

Major files in the folder EPIC0509 include

- GEPIC Executive file: *GEPIC1.0.mxd*
- EPIC related files
 - EPIC executive file: *EPIC0509.exe*
 - EPIC code: *EPIC0509.for*
 - Most detailed EPIC output file: **.out*
 - All other EPIC input and output files
- Text input file [*input.tx*]
- Annual output for specific year: e.g. *2000.txt*

File structure is demonstrated in the schematic representation of the integration of EPIC with GIS, shown in the following chart.

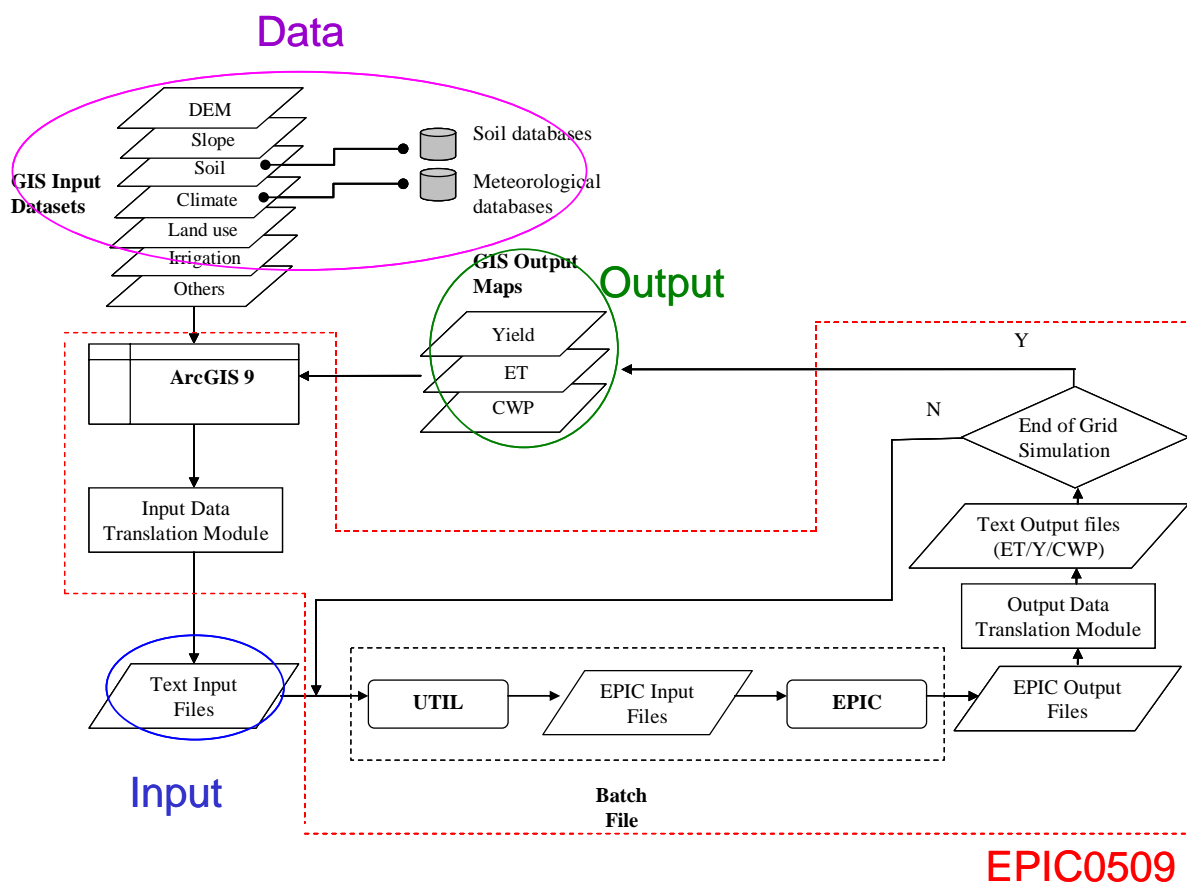


Figure 6. File structure in the schematic representation of the integration of EPIC with GIS.

C. Location of GEPIC executable file (see Fig. 7)

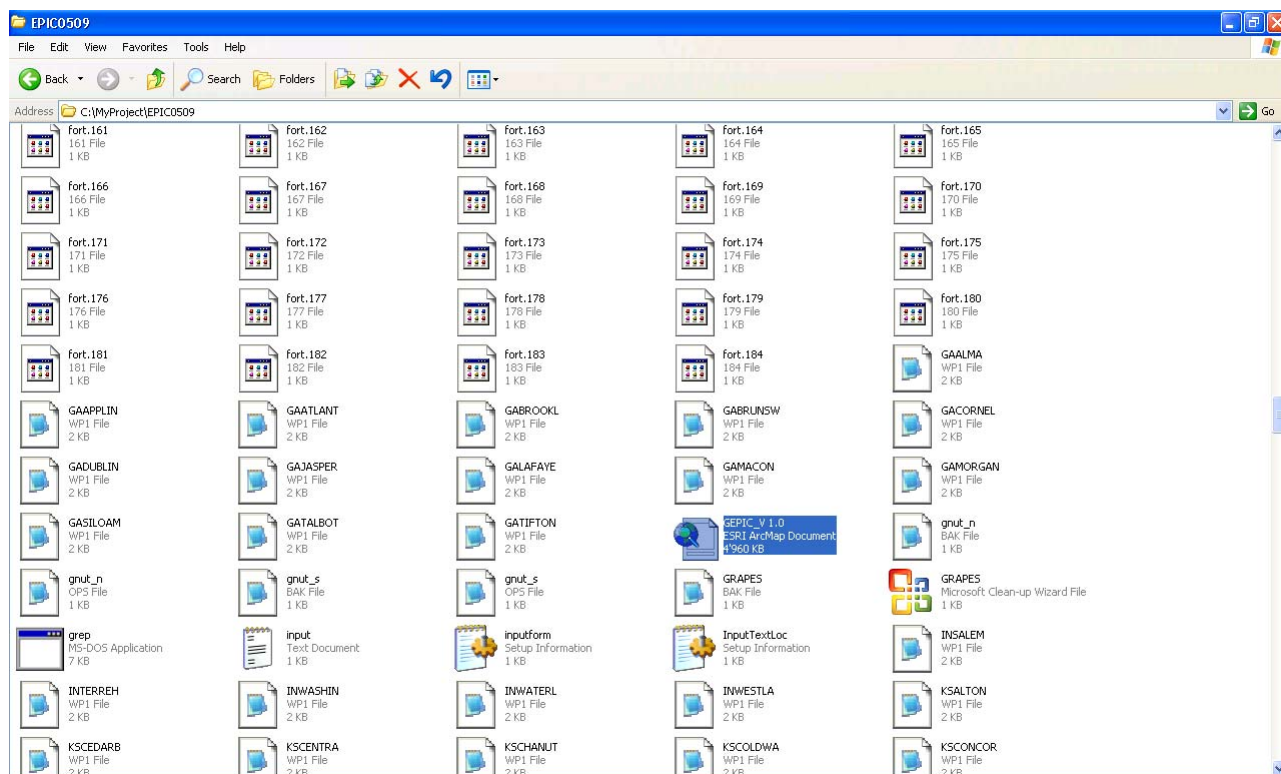


Figure 7. Location of GEPIC executable file

4. Input/Output files

4.1 Most important input data

- Soil parameters: each soil type (or soil code) should have one separate soil file (*.sol). The soil file has a strict format which has been explained in *EPIC User Guider v. 0509* on page 18-19. Soil parameters should be prepared as many as possible, and the following ones have to be included: depth, percent sand, percent silt, bulk density, pH, and organic carbon content. Users need to give a number for each soil file name (e.g. 3201.sol). The number is indicated in the soil code map (or Soil Raster Dataset).
- Climate parameters: daily weather data file (*.dly) and monthly weather statistics file (*.wp1) are needed. Users should give a same number for two corresponding weather files (e.g. 66100.dly and 66100.WP1). The number is indicated in the climate code map (or Climate Raster Dataset).

Daily weather data file (.dly)*

The format of the daily weather data file is described on page 21 in *EPIC User Guider v. 0509*. Daily weather parameters include solar radiation, max temperature, min temperature, precipitation, relative humidity and wind velocity.

Monthly weather statistics file

Once you have the daily data, a WXP3020 program can be used to generate the monthly weather statistics. Details please refer to page 21-23 in *EPIC User Guider v. 0509*.

- Irrigation data and fertilizer data (N is most important) are very important for crop yield and crop water use. Users should provide data on total annual amount of irrigation (in mm/yr) and annual fertilizer application (in kg/ha).

4.2 Format of input files

Three types of input data are needed for the GEPIC model: GIS raster datasets, text files and user-specified data.

The most important input data are GIS raster maps. They should be set in the *Input Datasets* form (Fig. 8). Necessary maps include:

- DEM raster dataset: the average elevation in each grid cell
- Slope raster dataset: the average slope (in %) in each grid cell (e.g. 8 means the slope is 8% in a grid cell)
- Country raster dataset: code number of different region. The default map shows the code number of each country.
- Land use raster dataset: this map provides information on crop distribution. In the land use map, only three numbers should be included: 0 indicates absence of a specific crop, while 1 and 2 indicate existence of the crop under rainfed and irrigated conditions, respectively;
- Soil raster dataset: code numbers of the soil files in each grid cell
- Climate raster dataset: code numbers of the climate files in each grid cell
- Irrigation raster dataset: annual maximum irrigation depth in mm/yr. When data are not available, select “No Data” button under the irrigation map input panel.
- Fertilizer raster dataset: annual maximum fertilizer application rate in kg/ha.

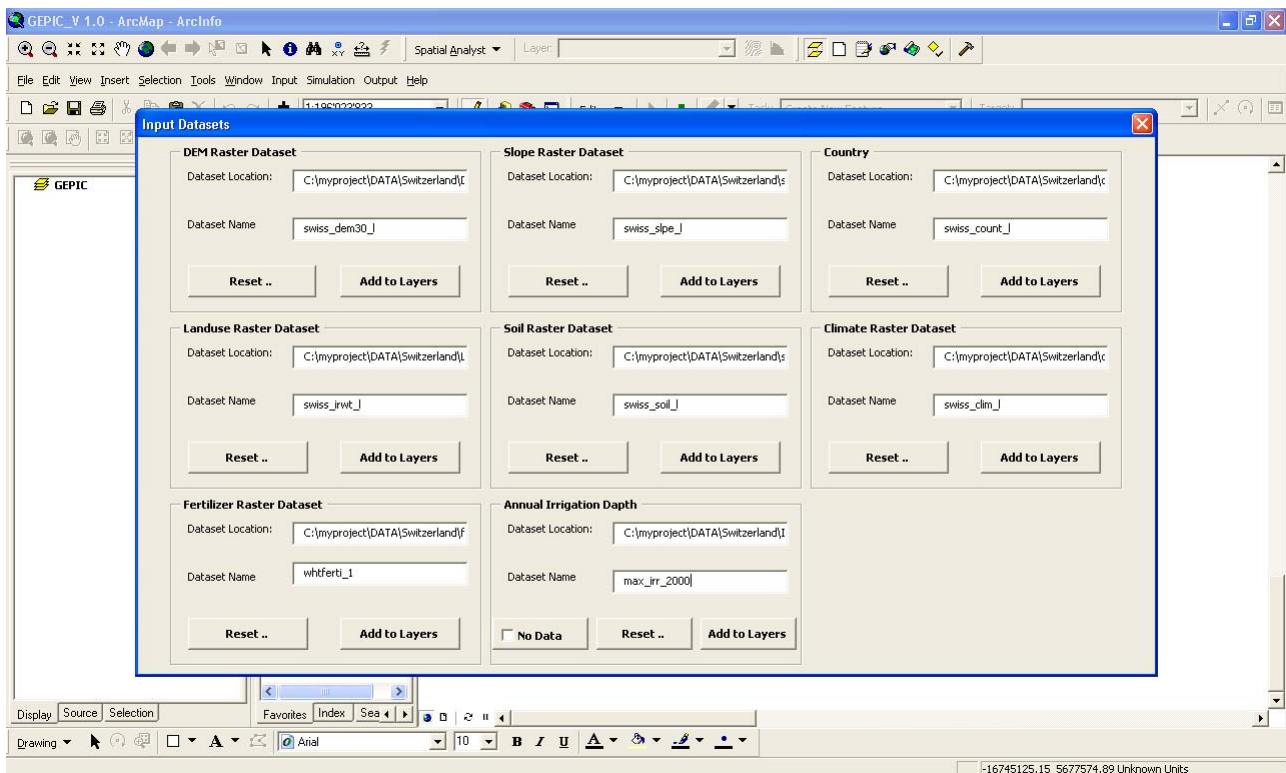


Figure 8. Pop-up window for setting input raster datasets

The second type of input data is text files. Weather and soil data are stored in text files.

- Weather data: when daily weather data are available, each climate code corresponds to two weather text files: (1) daily weather text file containing daily weather data (e.g. daily precipitation, daily minimum and maximum temperatures), and (2) monthly statistics text file which contains information on monthly weather statistics. When monthly weather data are available, each climate code corresponds to at least four text files, which contain monthly data on (1) precipitation; (2) maximum temperature; (3) minimum temperature; and (4) number of wetting days.
- Soil data: each soil code corresponds to one soil text file, which contains several soil parameters (e.g. soil depth, percent sand and silt, pH, organic carbon content, etc) (see Fig. 9). The format of the soil file is shown in page 18-19 in the *EPIC User Manual*.

Users need to prepare the weather and soil data files. For large-scale studies, users should prepare a large number of data files. In this case, they may need to write a computer program to help them create these files.

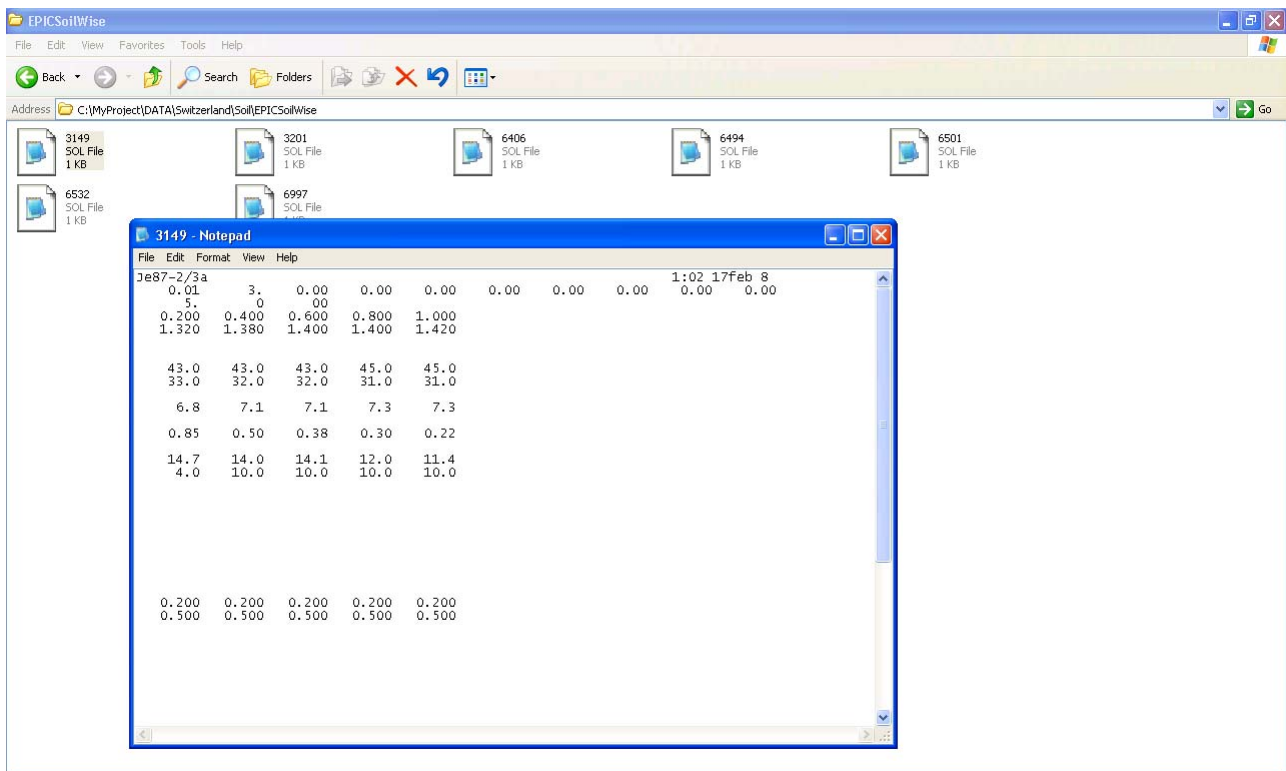


Figure 9. Soil data files and their format.

The third type of input data is the user-specified data in pop-up windows in the GEPIC interface (e.g. in Fig. 10). Users just need to complete the forms. When users close the windows, the input information in the forms is saved automatically by the GEPIC model.

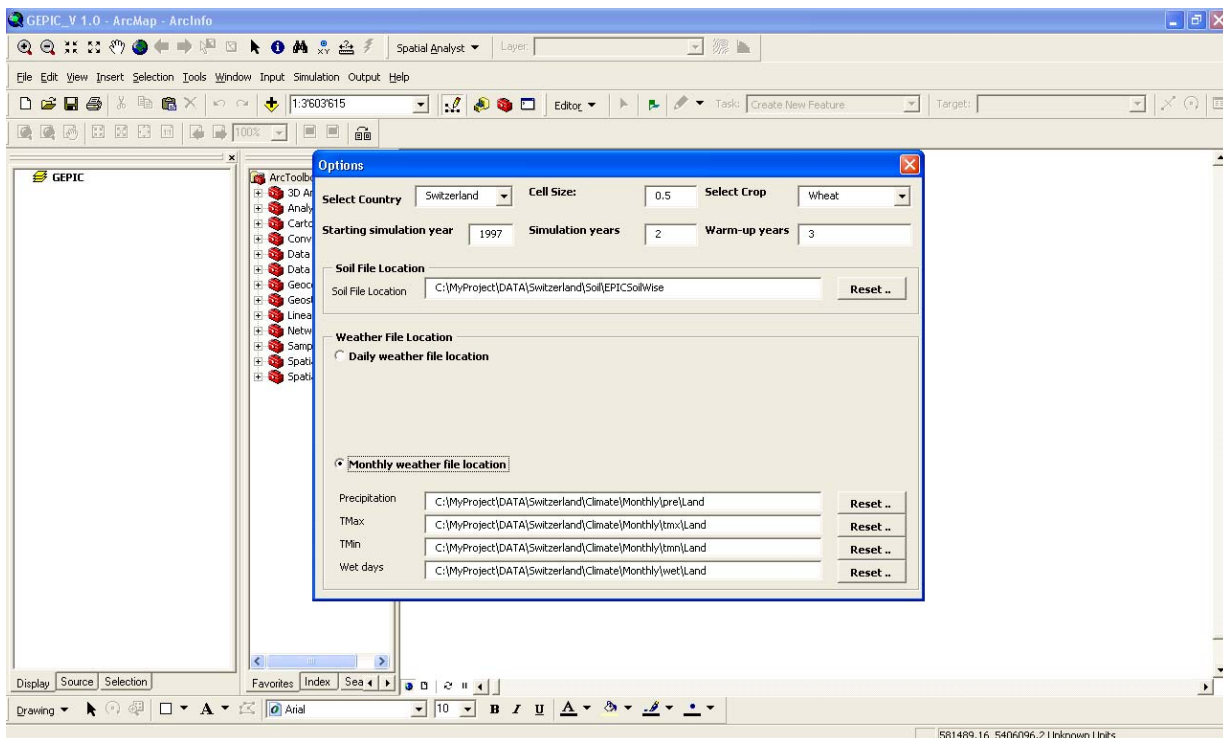


Figure 10. Options form

4.3 Format of output files

The main outputs of the **GEPIC model** are raster GIS maps representing the spatial distribution of output variables such as crop yield and evapotranspiration. The rules for the output maps are as follows:

Variable code and meaning

- yd: yield
- et: seasonal ET
- wp: crop water productivity
- bm: biomass
- t: transpiration
- i: irrigation
- hi: harvest index
- n: N fertilizer input
- aet: annual ET

Name format of the output maps:

- one specific year: variable code _ year [e.g. *yd_1995*]
- average of multiple years: variable code_startyear_endyear [e.g. *yd_1995_2000*]

The variable codes are used to give names to maps (see *name format of the output maps*). The GEPIC always use the names with the above format. The output maps are saved in the folder specified by users in the *Map Generation Form* (see Fig. 28: *Step 3 Select folder to save maps*). In case you want to change the output map names, use ArcCatalog to do so.

Another kind of GEPIC outputs are “text output files” [e.g. *2000.txt*, *2001.txt*. The names depend on the simulation period set by users]. These files are used to generate the above output maps. In each text file, one line shows the results of 62 variables for one grid cell. Variables are separated with a comma in the output files (see the following graph for output format).

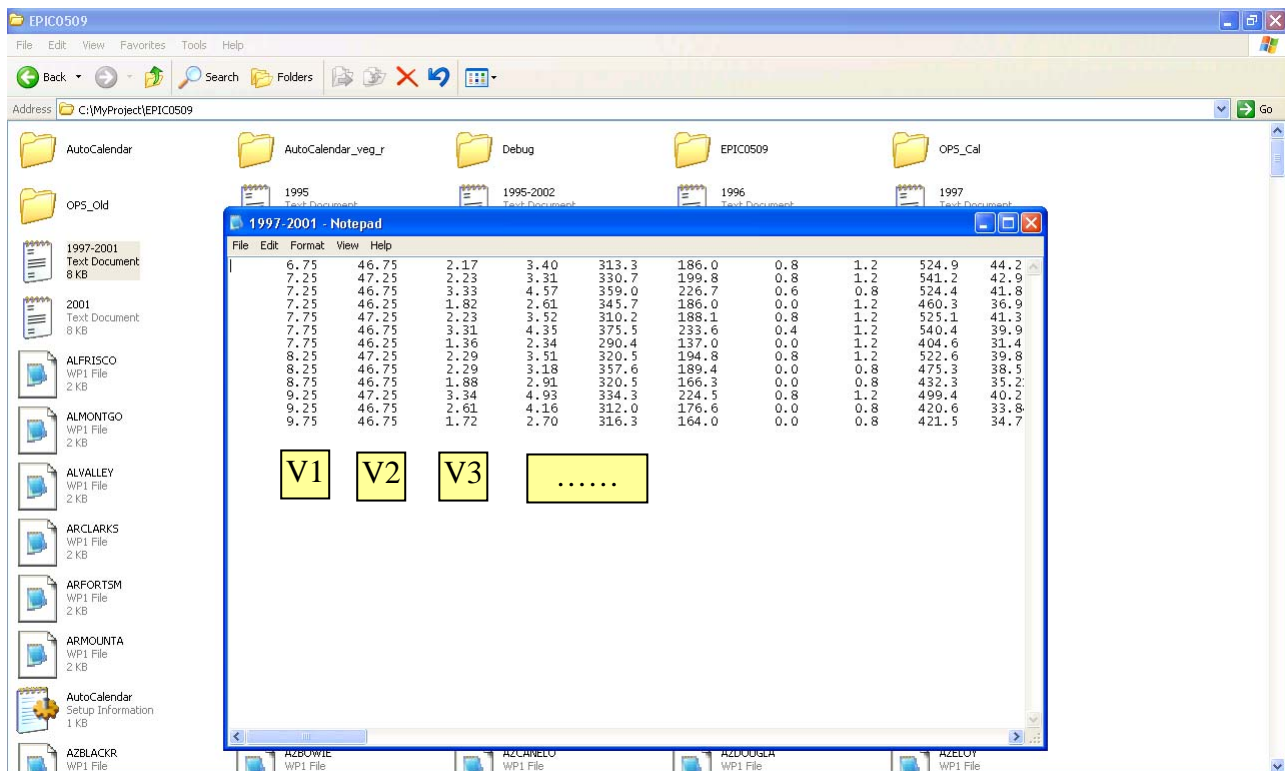


Figure 11. Format of text output file

The output variables include:

V1: Longitude

V2: Latitude

V3: Crop yield (t/ha)

V4: Ratio of crop yield to growing season ET (kg/mm)

V5: ETGS (Growing season ET in mm)

V6: GSEF (Growing season plant transpiration in mm)

V7: SMY(19) (Irrigation volume in mm)

V8: FGIS (N fertilizer applied in kg/ha)

V9: SMY(11) (Actual ET in mm)

V10: GSVF (Growing season vapour pressure deficit in KPa)

V11: HGIS (Crop harvest index)

V12: SRAF (Growing season solar radiation in MJ/m²)

V13: YLNG (N content of crop yield in kg/ha)

V14: TNGS (N content of soil in kg/ha)

V15: X2 (N lost to atmosphere in kg/ha)

V16: X3 (N lost with runoff, subsurface flow, and erosion in kg/ha)

V17: SMY(42) (Wind erosion in t/ha)

V18: SMY(NDVSS) (water erosion for driving EQ in t/ha)

V19: SMY(3) (Solar radiation in MJ/m²)

V20: BGIS (Biomass production in t/ha)
V21: SF1 (Water stress in days)
V22: SF2 (N stress in days)
V23: SF3 (P stress in days)
V24: SF4 (K stress in days)
V25: SF5 (Temperature stress in days)
V26: SF6 (Aeration stress in days)
V27: SF7 (Salt stress in days)
V28: SMY(46) (N leached in kg/ha)
V29: SMY(43) (Organic N loss with sediment in kg/ha)
V30: SMY(47) (Net mineralization in kg/ha)
V31: SMY(49) (Denitrification in kg/ha)
V32: SMY(50) (N fixation in kg/ha)
V33: SMY(85) (N mineralization from humus in kg/ha)
V34: SMY(51) (Nitrification in kg/ha)
V35: SMY(52) (Volatilization in kg/ha)
V36: SMY(53) (N loss in drainage system in kg/ha)
V37: SMY(54) (P loss with sediment in kg/ha)
V38: SMY(56) (P mineralization in kg/ha)
V39: SMY(57) (P leached in kg/ha)
V40: SMY(58) (Enrichment ratio)
V41: SMY(59) (N fertilizer organic form in kg/ha)
V42: SMY(60) (N fertilizer NO₃ form in kg/ha)
V43: SMY(61) (N fertilizer NH₃ form in kg/ha)
V44: SMY(62) (P fertilizer organic form in kg/ha)
V45: SMY(63) (P fertilizer mineral form in kg/ha)
V46: YLPG (P content of crop yield in kg/ha)
V47: YLKG (K content of crop yield in kg/ha)
V48: SMY(77) (Organic C loss with sediment in kg/ha)
V49: SMY(4) (Precipitation in mm)
V50: SMY(17) (Percolation in mm)
V51: SMY(14) (Runoff in mm)
V52: SMY(5) (Snowfall water equivalent in mm)
V53: SMY(6) (Snowmelt in water equivalent in mm)
V54: SMY(10) (Potential ET in mm)
V55: SMY(12) (Potential plant transpiration in mm)
V56: SMY(13) (Actual plant transpiration in mm)

V57: SMY(16) (Lateral subsurface flow in mm)
V58: SMY(18) (Drainage system flow in mm)
V59: SMY(15) (SCS curve number)
V60: SMY(20) (External inflow to maintain water table in mm)
V61: SWGS (Root zone soil water in mm)
V62: SMY(68) (Soil water in top 10 mm of soil in mm)

4.4 How to read output variables from the annual output files?

Step 1: Open an annual output file in Excel
Step 2: Add an additional row at the beginning of the file
Step 3: In the first line of the Excel file, add column code 1, 2, ... 62
Step 4: Find output variables with these codes and the code above (V1, V2... V62)
Step 5: Read your target output variables, e.g. Annual ET (V9), T (V56), Seasonal ET (V5), Reference ET (V54)

5. Step by step to use GEPIC

Example

Assuming you would like to simulate crop yield of irrigated wheat in Switzerland on a 0.5° resolution in 2000 and 2001. You need to prepare the following raster datasets:

- Land use map (crop distribution map) for wheat in Switzerland
- Soil code map
- Climate code data
- Slope map
- Digital Elevation Model (DEM) map
- Country code map
- Annual irrigation depth for wheat
- Fertiliser application rate for wheat

Make sure that:

- All the above datasets have the same spatial resolution as that specified for your simulation. Users need to specify the simulation resolution in the *Options* window for GEPIC;
- All the above datasets should have the data type of LONG. When your raw data are not with this data type, you need to convert to this type by using *Hawths Analysis Tools*;
- When you do not have irrigation data, select the **No Data** Check Box. The model will assume sufficient irrigation for the grid cells under irrigated systems.

The above datasets have been prepared in the 'DATA' folder for demonstration. Please follow the steps for using the GEPIC model.

Step 1: Open the GEPIC file

Open the GEPIC1.0.mxd file from the shortcut you created on your desktop, or from *C:\MyProject\EPIC0509\GEPIC1.0.mxd*. An ArcGIS window opens. You can locate GEPIC Toolbar in the window.

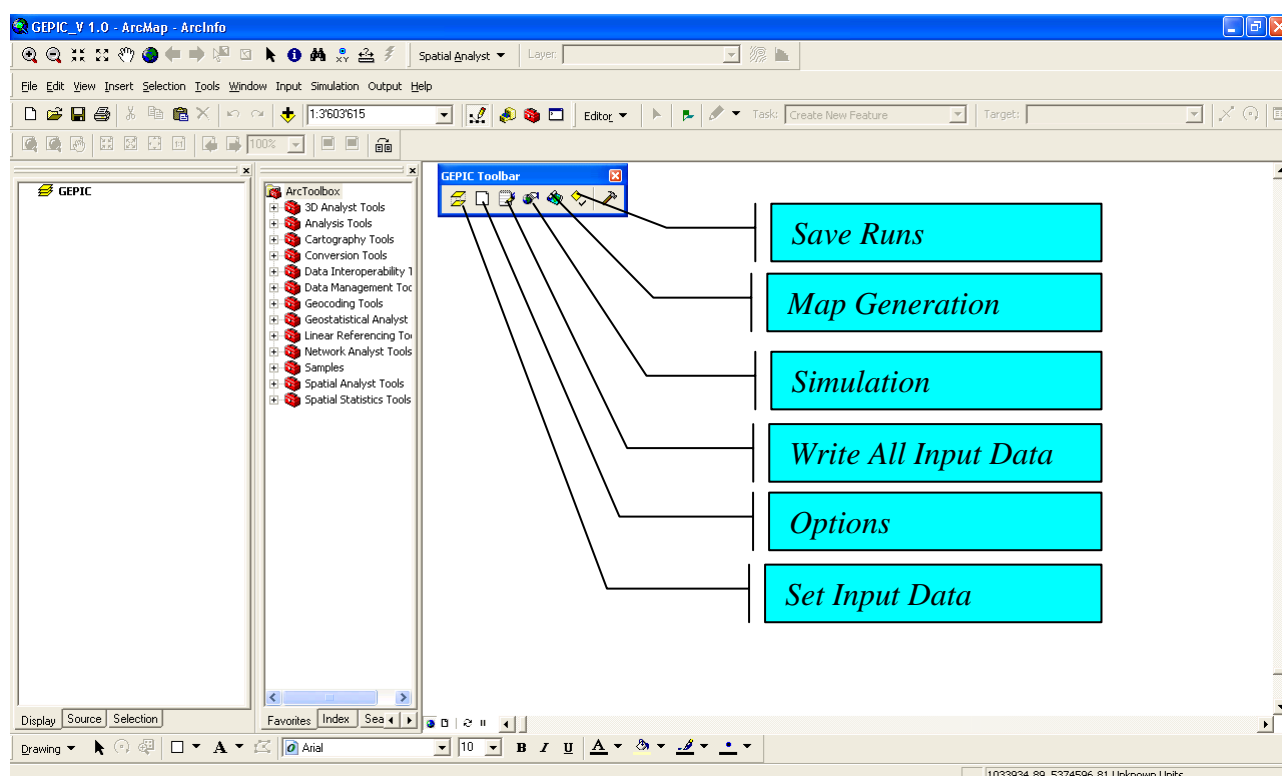


Figure 12. The GEPICTool toolbar

The GEPICTool toolbar contains six major functional buttons (Fig. 12):

- 1) *Set Input Data*: clicking on this button opens the *Input Data Form*, where you can specify the location of your raster datasets and display your data in ArcGIS.
- 2) *Options*: clicking this button opens the *Setting Simulations Options Form*, where you can select your simulation options.
- 3) *Write All Input Data*: clicking this button will send commands to read raster datasets and write all input information into the text input file "input.txt".
- 4) *Simulation*: clicking this button will open the *Auto Calendar* window, where you can select fixed crop calendar or automatic crop calendar for your simulation.
- 5) *Map Generation*: clicking this button will open the *Map Generation* form, where you can generate maps from output data.
- 6) *Save Runs*: clicking this button will open a form to help save your simulation runs.

If the GEPICTool toolbar is not within the ArcGIS system, click on the *View* menu on your ArcGIS menu. Scroll down to *Toolbars* in the drop down menu and make sure *GEPICTool* is ticked. If it is not, click on it to display the GEPICTool toolbar (please follow Fig. 13). You can then customise the location of the toolbar.

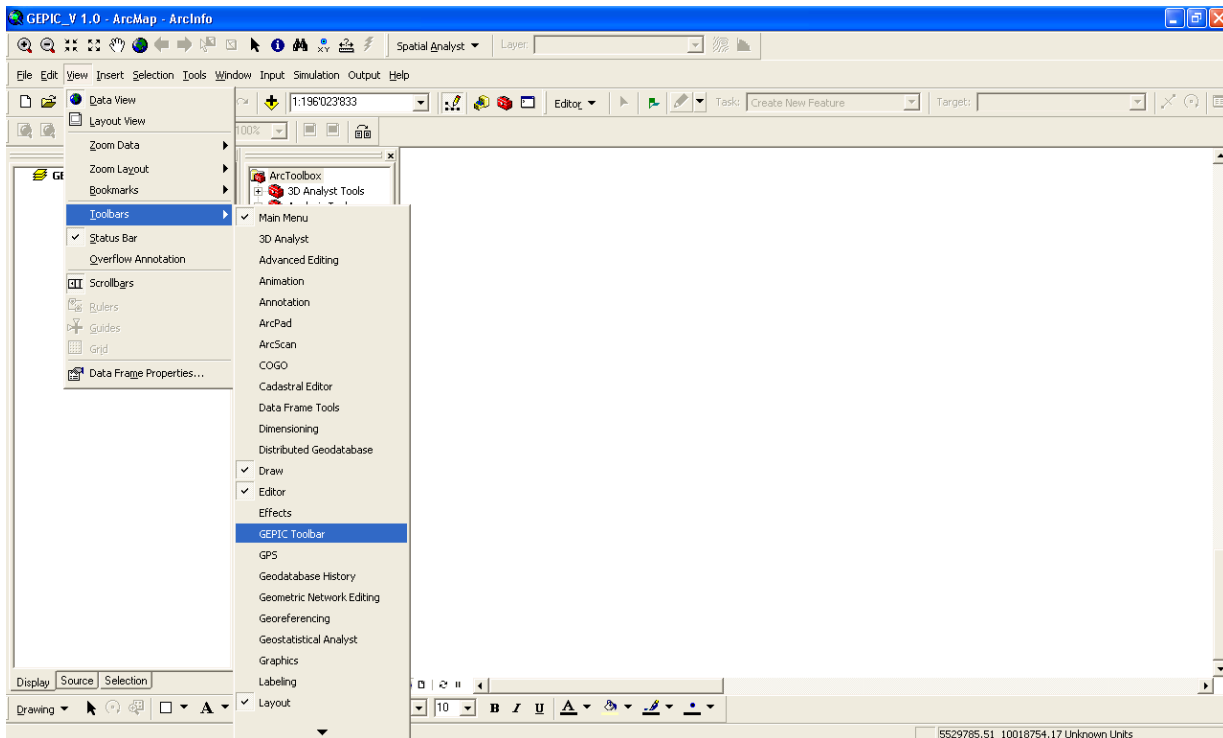


Figure 13. Set GEPIC toolbar in ArcGIS

Step 2: Specify the location of your raster datasets

Click on the toolbar *Set Input Data* to open the *Input dataset form*. The first tab on the GEPIC toolbar is called the *Set Input Data* (see the following graph). Put your cursor above the first tab and you will see the name.

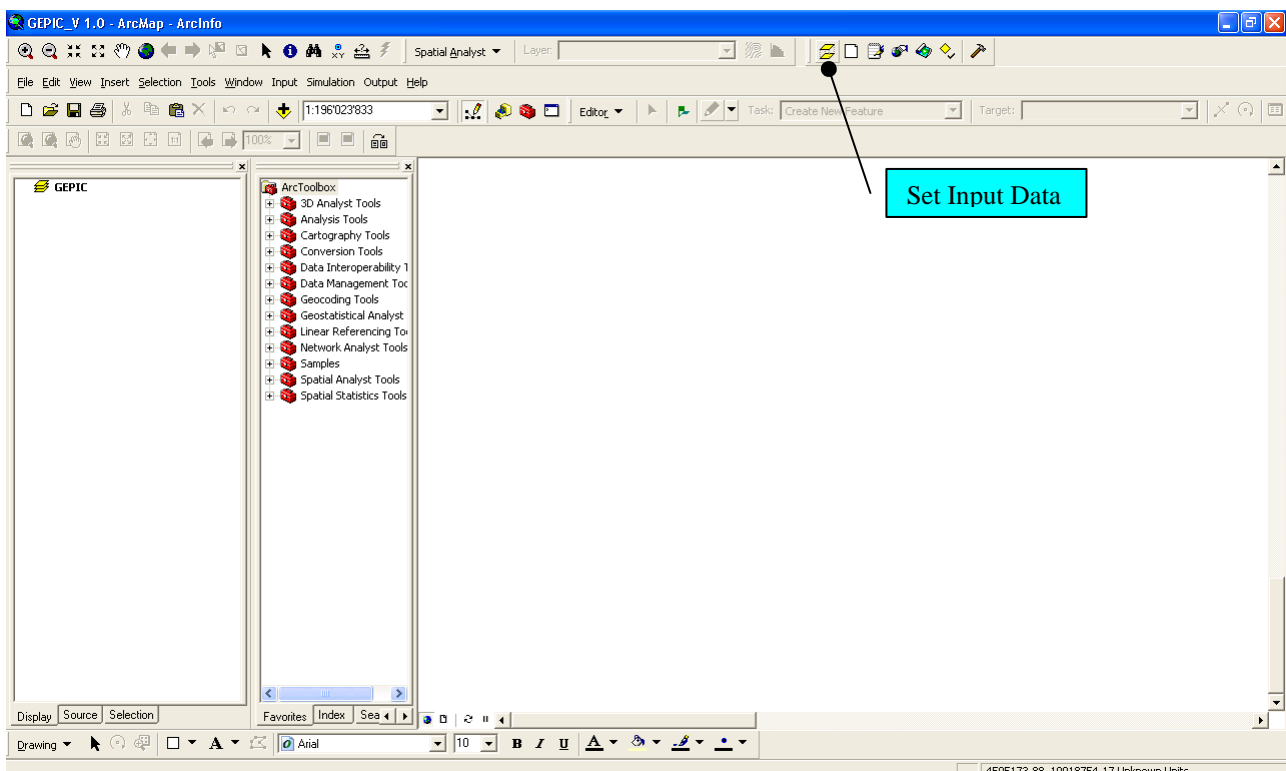


Figure 14. Set Input Data Tool

In the *Input dataset form* (the next graph) you can **specify the locations of your raster datasets**. Click the *Add to Layers* button to add and display the raster data in ArcGIS.

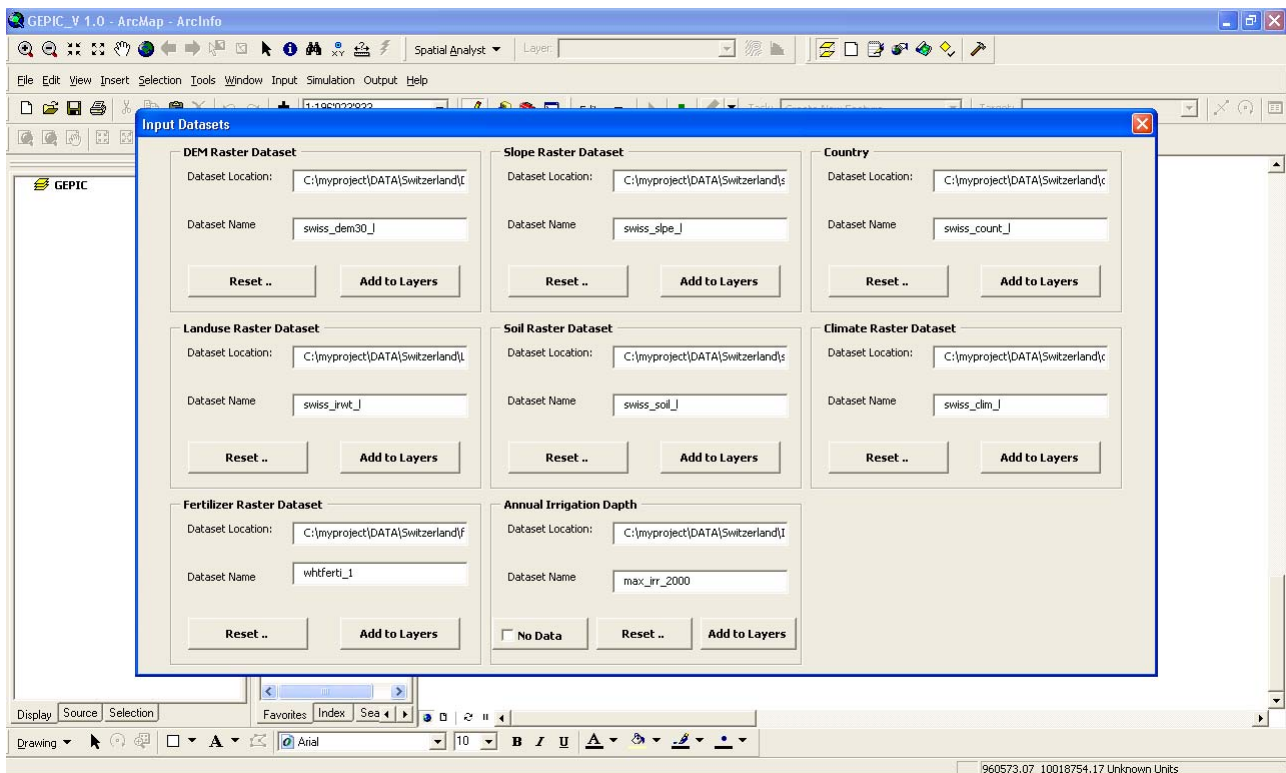


Figure 15. Input Dataset form

You will set the following raster datasets as input:

A. DEM Raster Dataset

Step 1: Click on the *Reset* tab.

Step 2: Navigate to the location of the GEPICT (C:\MyProject). Open folders as follows: C:\MyProject\DATA\Switzerland\DEM. Click on the raster *swiss_dem30_I*.

Step 3: Click on *Select* to select this raster. You will now repeat this process for all the other raster datasets.

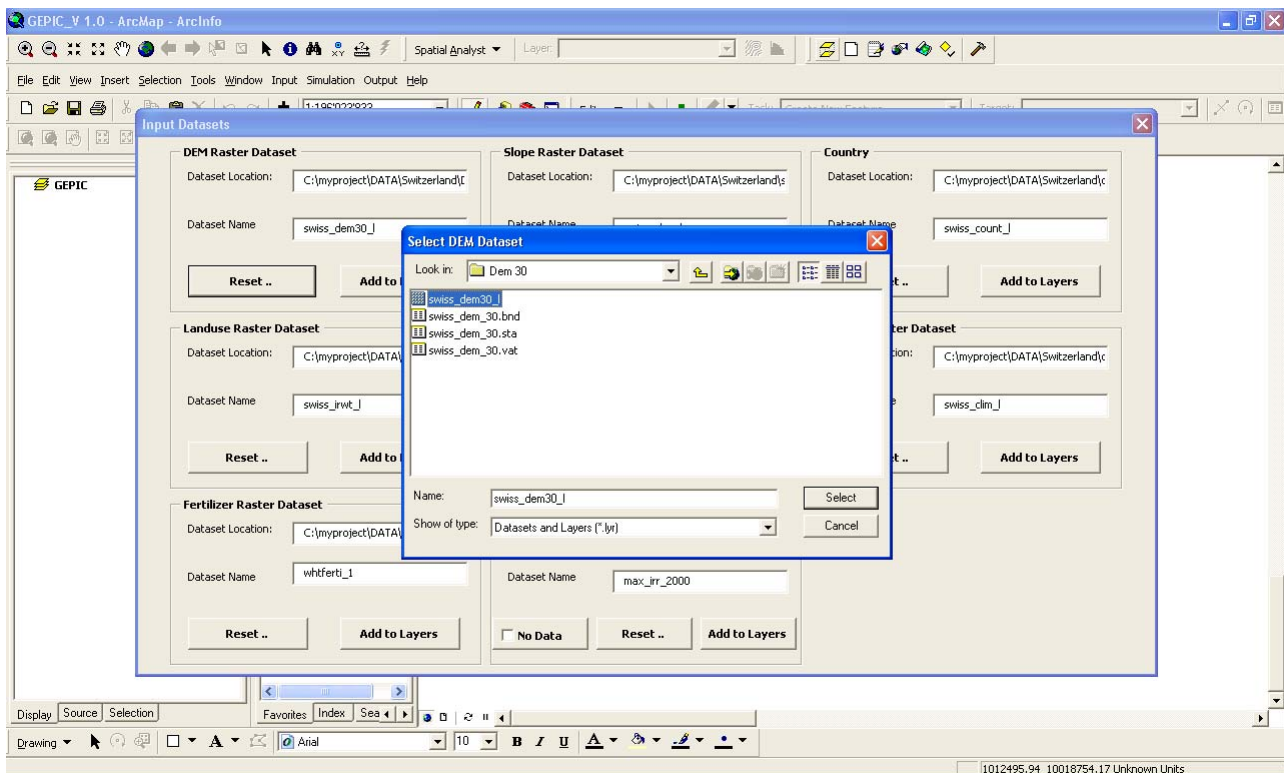


Figure 16 Select DEM dataset

B. Slope Raster Dataset

Step 1: Click on the *Reset* tab.

Step 2: Navigate to *C:\MyProject\DATA\Switzerland\Slope*. Click on *swiss_slope_1*.

Step 3: Click on *Select* to select this raster.

C. Country

Dataset Location: *C:\GEPIC\DATA\Switzerland\Country*

Dataset Name: *swiss_count_1*

D. Landuse Raster Dataset

Dataset Location: *C:\GEPIC\DATA\Switzerland\Landuse*

Dataset Name: *swiss_irwt_1*

E. Soil Raster Dataset

Dataset Location: *C:\GEPIC\DATA\Switzerland\Soil*

Dataset Name: *swiss_soil_1*

F. Climate Raster Dataset

Dataset Location: *C:\GEPIC\DATA\Switzerland\Climate*

Dataset Name: *swiss_clim_1*

G. Fertiliser Raster Dataset

Dataset Location: *C:\GEPIC\DATA\Switzerland\fertiliser*

Dataset Name: *whtferti_1*

H. Annual Irrigation Depth

Dataset Location: *C:\GEPIC\DATA\Switzerland\Irrigation*

Dataset Name: *max_irr_2000*.

Leave the *No Data* box unchecked.

Make sure the form looks exactly like the following one.

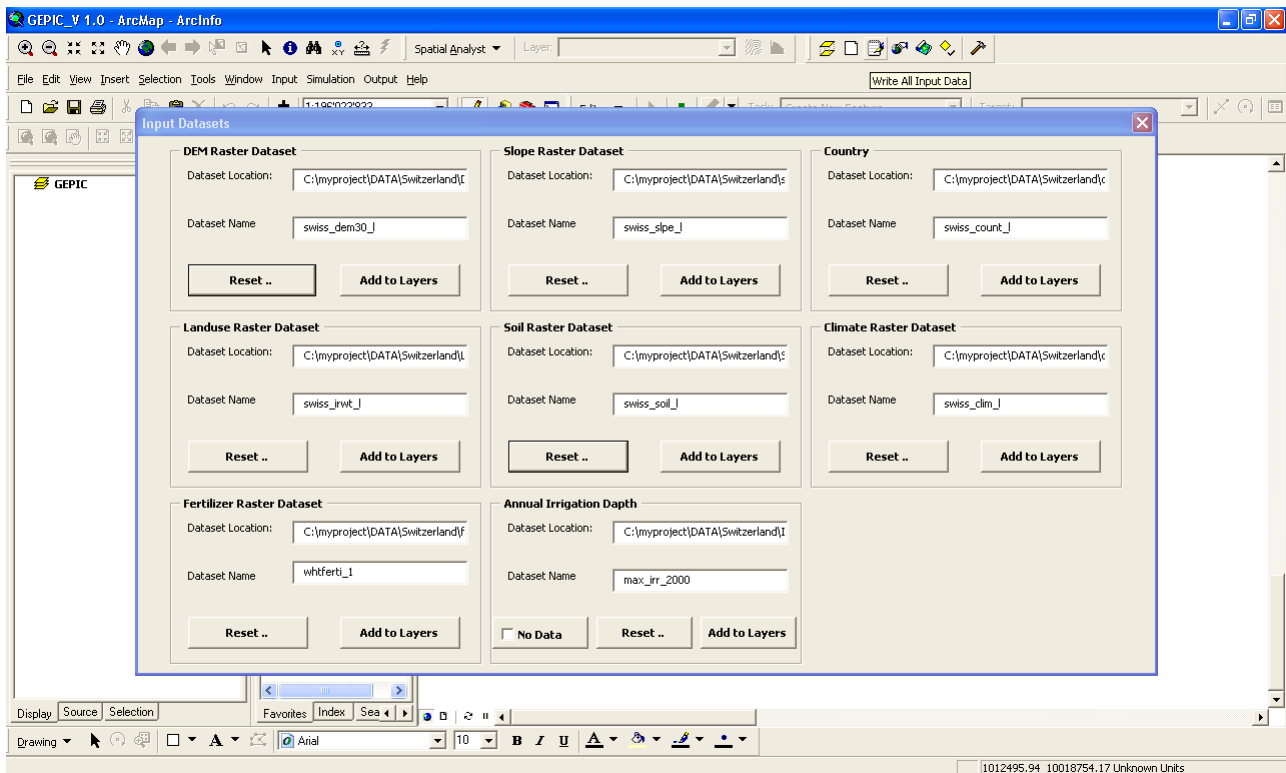


Figure 17. Input datasets for this example

Close the *Set Input Data* form.

Step 3: Set Simulation Options

Click on the next tab (*Options* tab) on the GEPIC toolbar to open the *Options* form. Select your simulation options as follows:

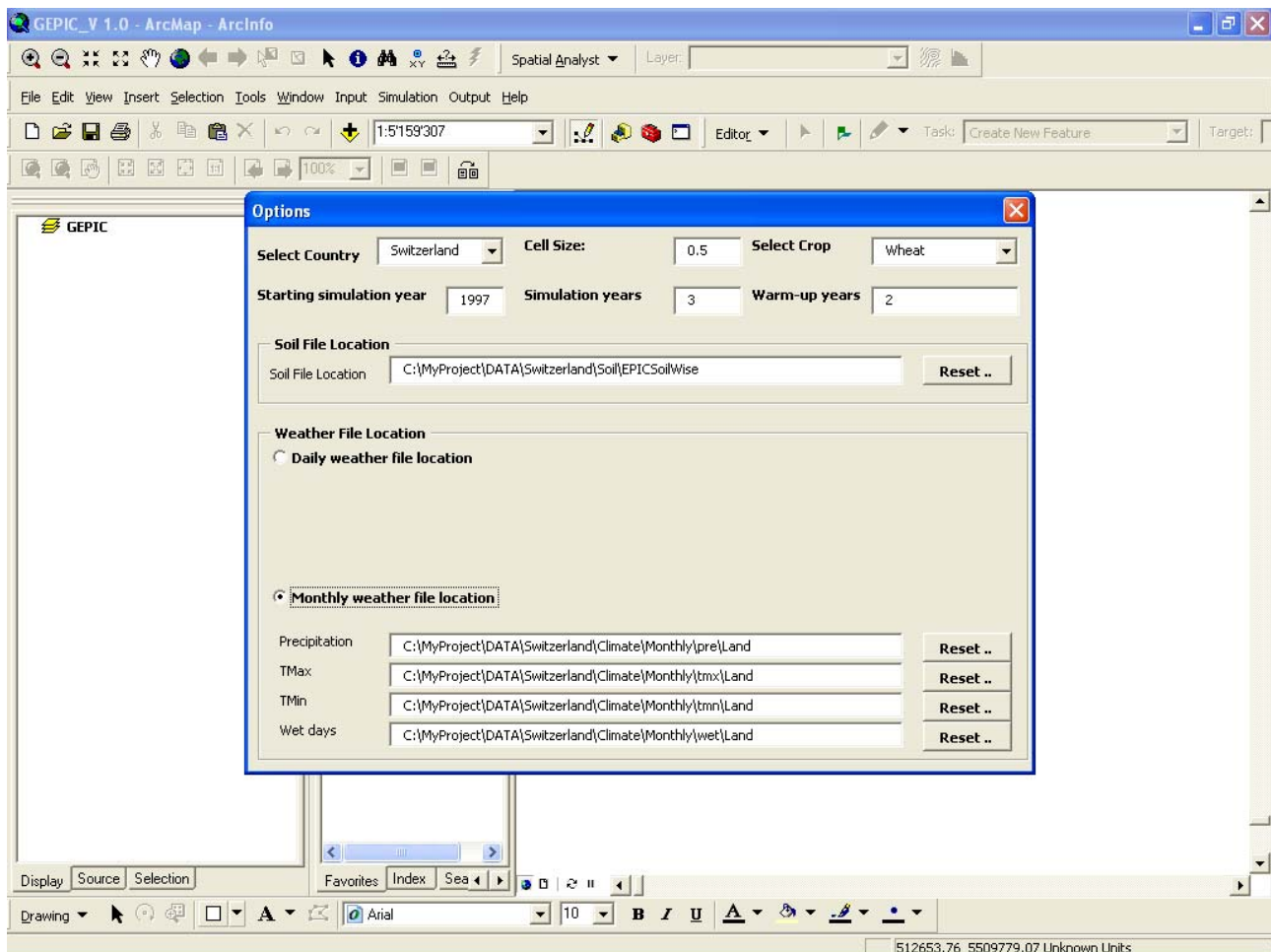


Figure 18. The options Form

A. Select *Switzerland*: click the drop arrow in the *Select Country* field and select *Switzerland*.

Note:

- For global simulations, select *World* from the *Select Country* field.
- For national simulations, select one specific country from the *Select Country* field.
- For simulations which cover neither one specific country nor the entire world, define the boundary of the simulation area in the *Landuse Raster Dataset* in the *Input dataset form*. You should only define the land use for the spatial extent of the area you are interested in. Then, select *World* in the *Select Country* field. GEPICT will run the simulation for only the spatial extent covered by the *Landuse Raster Data* set you specified.

B. Set the simulation spatial resolution. In this case our grid size is 0.5 degrees.

C. Select *wheat* in the *Select crop* field

D. Set simulation period

You need to set *warm-up* period (e.g. 3 years) before actual simulations begin. The GEPICT model generally creates unreliable results in the first few years. This setting of warm-up period aims at minimising the possibility of errors at the start of the simulation. Type 3 in the *Warm-up years* field

To simulate for 2000 and 2001, type 2 in the *Simulations years* field. Note: Your climate data must cover the simulation period.

So the starting simulation year should be 1997. In this example, the warm-up period include 1997, 1998 and 1999.

E. Set up soil parameter files

The soil parameter files for all the grid cells are saved in the *EPICSoilWise* folder. To select the location of these files, click on *Reset* as before. Open *C:\MyProject\DATA\Switzerland\Soil*. Then click on *EpicSoilWise* and on *ok* to select it.

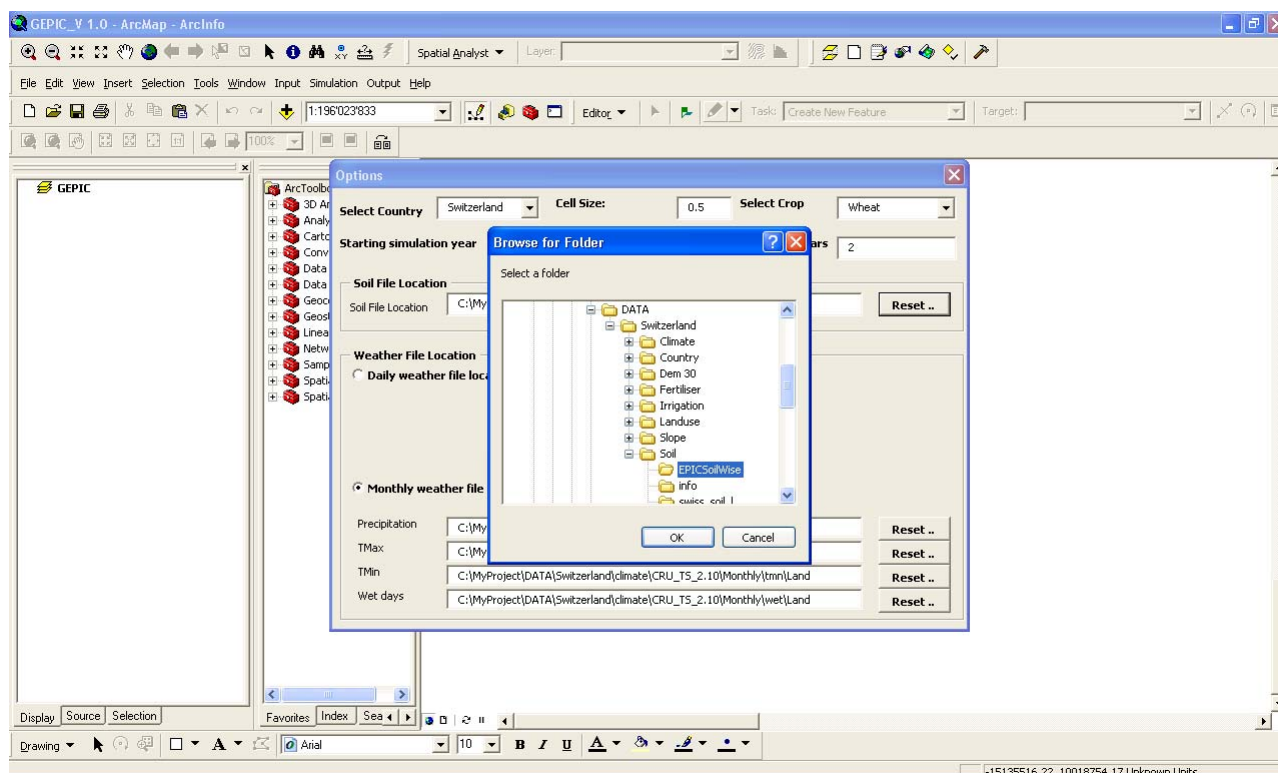


Figure 19. Set soil file folder

F. Set the location of weather files

Users can provide either daily weather data or monthly weather data.

Daily weather data

To set daily weather data, check the Daily weather file location box (see Fig. 20) and use the *reset* tab to select the location of your daily weather file.

The variables in the daily weather files are *Year* (6 spaces), *Month* (4 spaces), *Day* (4 spaces), *Solar Radiation* (6 spaces), *Maximum Temperature* (6 spaces), *Minimum Temperature* (6 spaces), *Precipitation* (6 spaces), *Relative Humidity* (6 spaces), and *Wind Speed* (6 spaces) (Fig. 21).

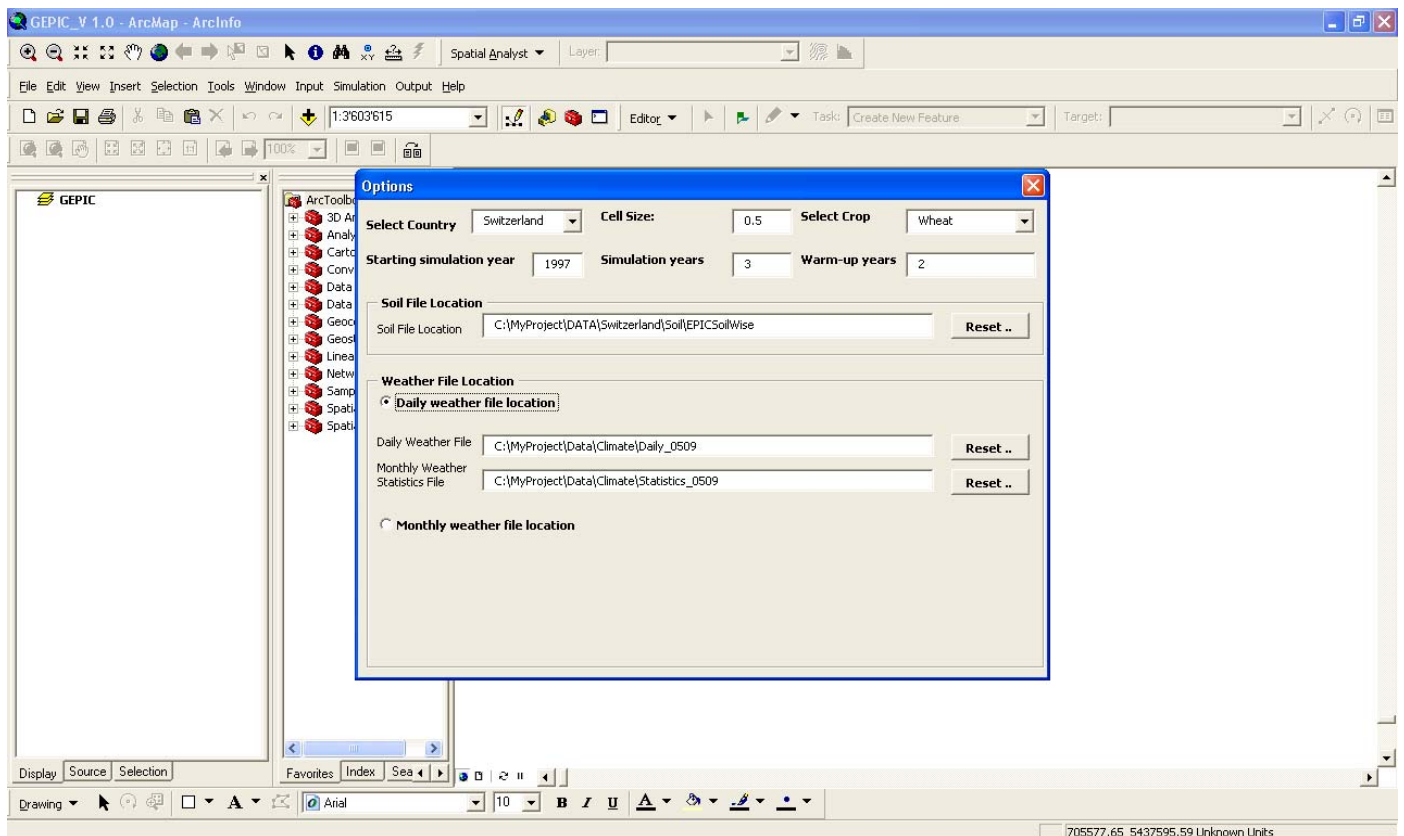


Figure 20. Set daily weather file folder

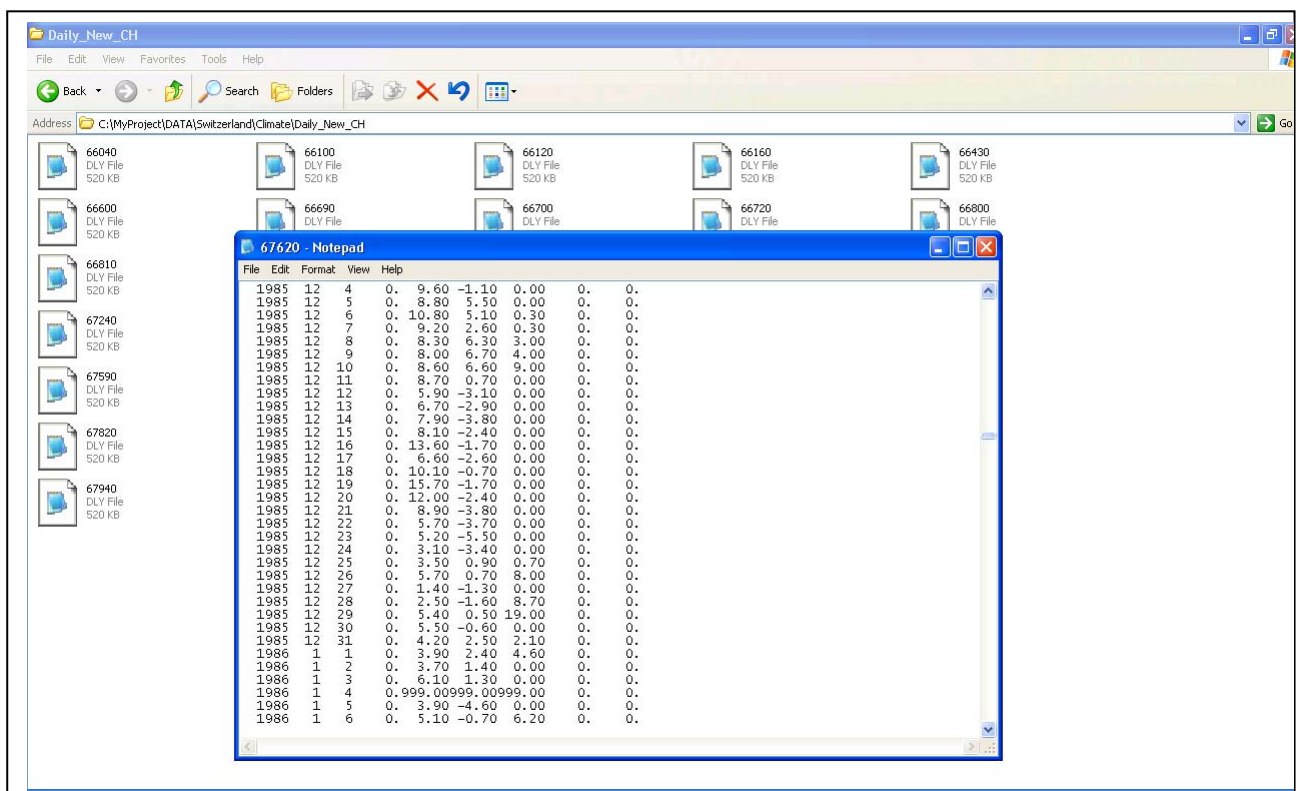


Figure 21. File format for daily weather data

Monthly weather data

When users provide monthly data, a built-in MODAWECEC weather generator is used to generate daily weather (precipitation, maximum temperature and minimum temperature) from monthly weather data. In this case, users need to set four monthly weather files for precipitation, maximum temperature, minimum temperature and number of wetting days, respectively (see Fig. 26). The four files share the same data format. The format of the monthly precipitation data is shown in Fig. 24. In each line, the variables include *Year*, *Precipitation in January*, *Precipitation in February* ... *Precipitation in December*.

Year	Jan	Feb	Mar	Apr	May	Jun	Jul	Aug	Sep	Oct	Nov	Dec
1901	50.3	56.3	92.7	201.4	31.6	183.1	177.6	139.3	234.4	86.7		
1902	82.9	139.4	117.8	121	82.2	37.8	91.5	138.7	97.1	85.3		
1903	71.8	19.7	37.8	84.4	107.3	181.6	110.4	115.6	53.3	140.4		
1904	48.5	221	55.5	59.6	107.6	89.7	16.2	54.8	132.2	29.6		
1905	59.1	31.5	102.2	127	103.7	121.3	50.1	168.6	214	95.1	1	
1906	67.2	63.4	67.6	73.9	127.2	60.6	108.9	29	36.2	70.6		
1907	63.3	78.1	68.2	163.7	64.7	153	78.3	37	69.8	114.2		
1908	27.2	121.6	91.6	122.7	238.5	94.3	217.6	119.3	156.8	20.2		
1909	40.2	19.3	80	119.4	53.8	219.1	131.1	52.2	107.9	192.6		
1910	204.8	93	31.9	58.2	69.9	259.4	158	132.3	83.3	46.2	2	
1911	44.9	43.9	65.8	59	68.9	142.2	15	73.5	97.7	157.9	1	
1912	96.9	82.2	131.8	26.9	112.6	96.3	152.5	160.6	51.7	157.4		
1913	129.4	59.9	112.4	48.7	119.7	74.1	105.3	120.6	116.6	86.2	1	
1914	68.1	47.2	153.5	80.9	176.3	139.3	173.1	190.4	96.5	38.2		
1915	104.4	78.4	116.5	99.5	173.2	114.8	123.3	115.5	101.2	58	1	
1916	29.2	192.1	73.1	109	106.8	184.1	165.8	109.3	103.4	151.4		
1917	43.8	17.4	125.1	53.9	123	107.7	171.4	302.7	109.7	223.1		
1918	73.2	10.9	53.8	157	60.3	126.5	57.8	56.7	210.3	108		
1919	55	90.9	172	116.5	31.3	69.6	123.8	43.3	111.8	56.4	1	
1920	92.6	14.4	109.6	108.7	101.7	96.2	143.4	107	190.4	55.7		
1921	68.6	6.6	17.2	77.3	130	57.9	56.8	129.6	80.3	25.6		
1922	148.8	133.4	179.5	247.6	68	119.3	176.5	94.8	112.7	149.6		
1923	63.3	113.7	76.4	127.6	212.2	49.8	53.8	81.7	103.5	244.9	1	
1924	38	41.4	80.3	103	145.4	138.5	93	92.6	208.7	56.4		
1925	74.8	134.9	62.4	130	157	41.9	198.6	145.4	163.9	54	1	
1926	65.7	65.7	81.9	32.3	166.4	145.6	100.2	83	67.1	345.6		
1927	41.1	104.2	113.5	108.2	96	135.6	148.8	275.6	151.9	25.2		
1928	68.5	83.7	38	146.9	122.8	109.4	25	221.3	86.3	206.9	1	
1929	19.3	41	8.3	78.2	89.2	106.6	93.1	187.4	98.3	161		
1930	93.2	45.1	62.4	156.4	184.5	99	255.7	83.9	110.7	160.4	1	
1931	94.7	63.4	140.5	85.7	119.1	93.6	206.3	168.5	163	111.9		
1932	57.3	11.5	100.9	93.6	193	107.5	180.9	59.8	138.2	134.5		
1933	30.1	59	85.9	67.2	118.1	168.4	153.4	72	118.2	103.4	1	
1934	63.3	19.8	116.7	48.5	25.6	175.8	94.8	151.1	67	83.2		

Figure 22. File format for monthly weather data

We will use the monthly weather data for this simulation. To specify the monthly weather files locations:

- Check the *Monthly Weather files location* box. If it is already checked do not uncheck it.
- In the *Precipitation* field click on the *Reset* tab. Navigate to *C:\MyProject\DATA\Switzerland\Climate*. Click on the drop down arrow beside *Monthly* folder, then on the one beside *prec*. Click on *Land* and the *ok*. Click on the *ok* in dialogue box.

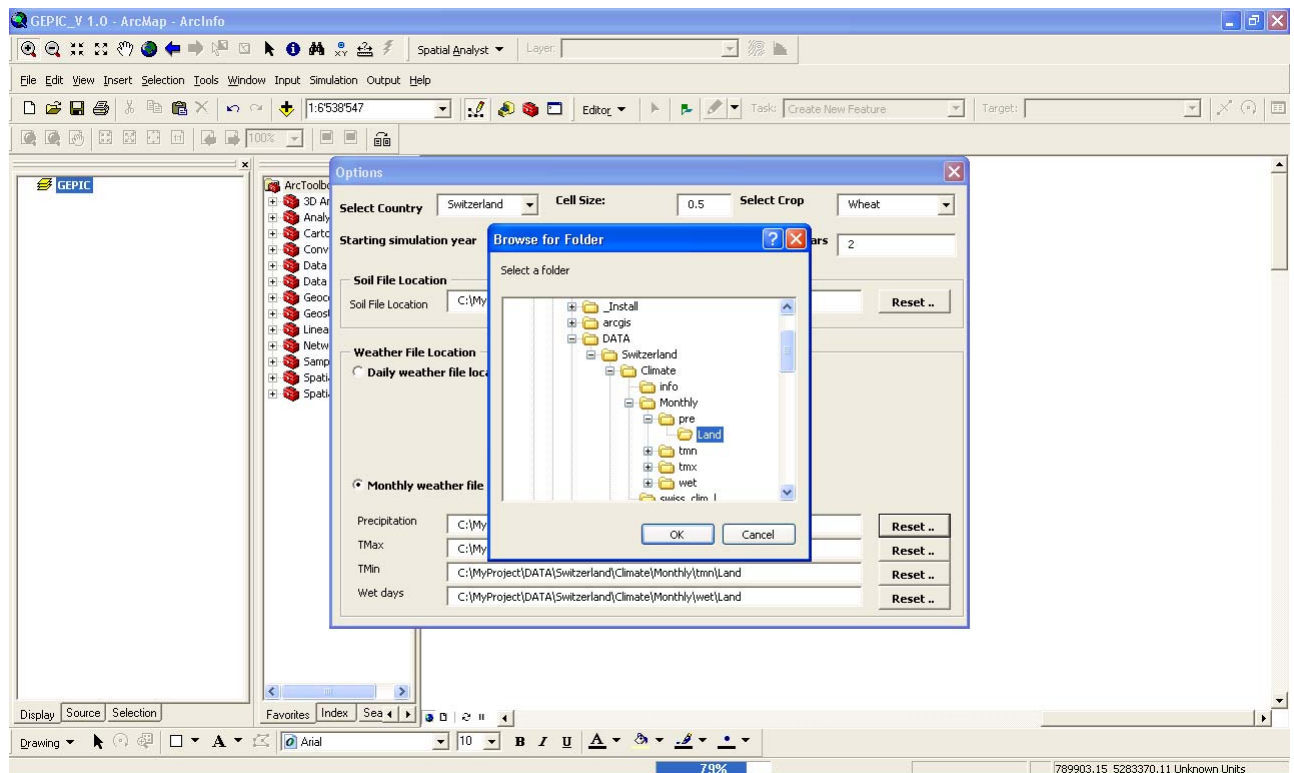


Figure 23. Select folder to set monthly precipitation data

- Monthly maximum temperature files: click on the *Reset* tab. Navigate to *C:\MyProject\ DATA\Switzerland\Climate* again and in the *Monthly* folder click on the arrow beside the folder *tmx*. Click on *Land* and then *ok* to select it. Click on *ok* again in the dialogue box.
- Monthly minimum temperature: click on the *Reset* tab. Navigate to *Climate* folder again and in the *Monthly* folder click on the arrow beside the folder *tmn*. Click on *Land* and then *ok* to select it. Click on *ok* again in the dialogue box
- Number of wet days: click on the *reset* tab in the *Wet days* field. Navigate to *Climate* folder. Under the *Monthly* folder, click on the arrow beside *wet*. Click on *Land*, then *ok* and *ok* again.

You are now through with selecting your main options. Make sure your form looks exactly like this:

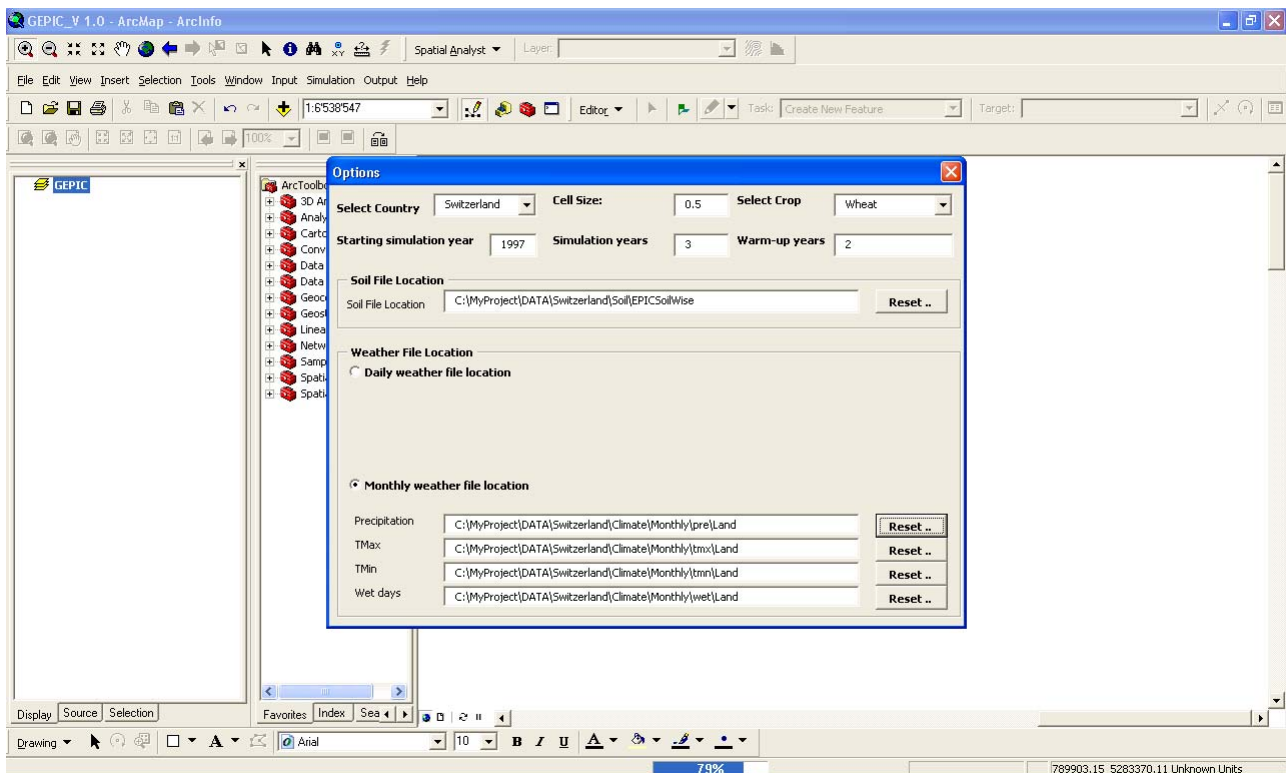


Figure 24. Complete the Options form

Close the *Options* form.

Step 4: Writing your input data

At this stage, you need to write all your input data. The third toolbar called the *Write All Input Data* (placing your cursor on this button will reveal its name) is needed for this purpose.

Click on the *Write All Input Data* tool to write and save all your input data. Now the input data are saved to the text input file *input.txt*.

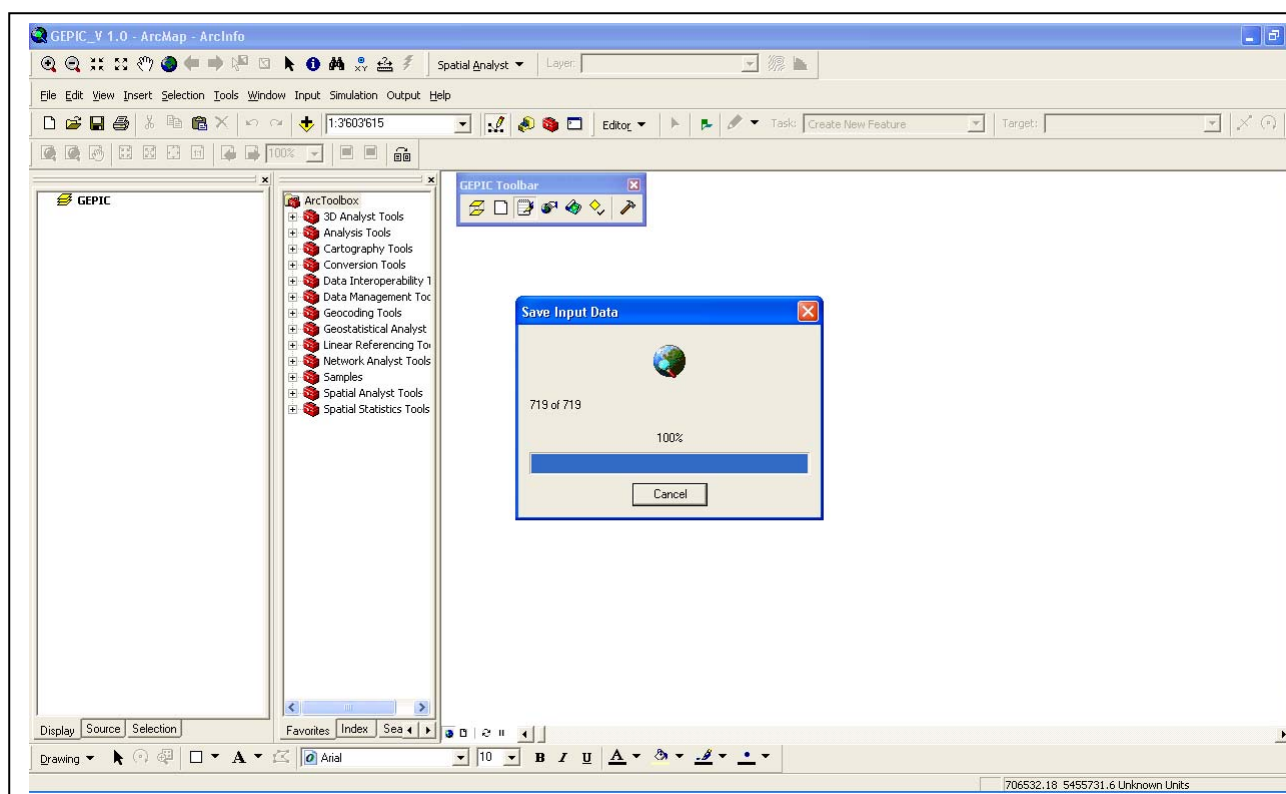


Figure 25 Save input data

Note: To be sure that your input files have all been written, open the EPIC0509 folder. Scroll to the *input.txt* file, open it (this can be done using Notepad) and make this file empty. Then click the button *Write All Input Data*. You should have some input in *input.txt*. An empty file means you fail to write input in this file. In case that you have an empty *input.txt*, please check:

- Land use raster dataset: it should contain only three numbers: 0, 1 and 2;
- *C:\MyProject* folder. You should have this folder. Some users change the folder name to *GEPIK*. This will lead to failure of simulation. Please keep the folder "*C:\MyProject*";
- Check the type of input raster datasets. Make sure the type is LONG
- No data: for example, in the demonstration version, we only provide data for Switzerland. When you select a country rather than Switzerland (e.g. China), GEPIK will not write anything to *input.txt*. You need to prepare data first!

Step 5: Run your simulation.

The fourth toolbar is the *Simulation* tool. Click on the *Simulate* tab, and an *Auto Calendar window* shows up. If you run a simulation for which exact planting and harvest dates are known, you can select the *Fixed Crop Calendar* option. In this case, you will need to specify the planting and harvesting dates in the crop operations *.ops (see EPIC user manual) file in the *EPIC0509* folder. When exact planting and harvest dates are not available, check the *Automatic Crop Calendar* box

Make sure your view looks exactly like this:

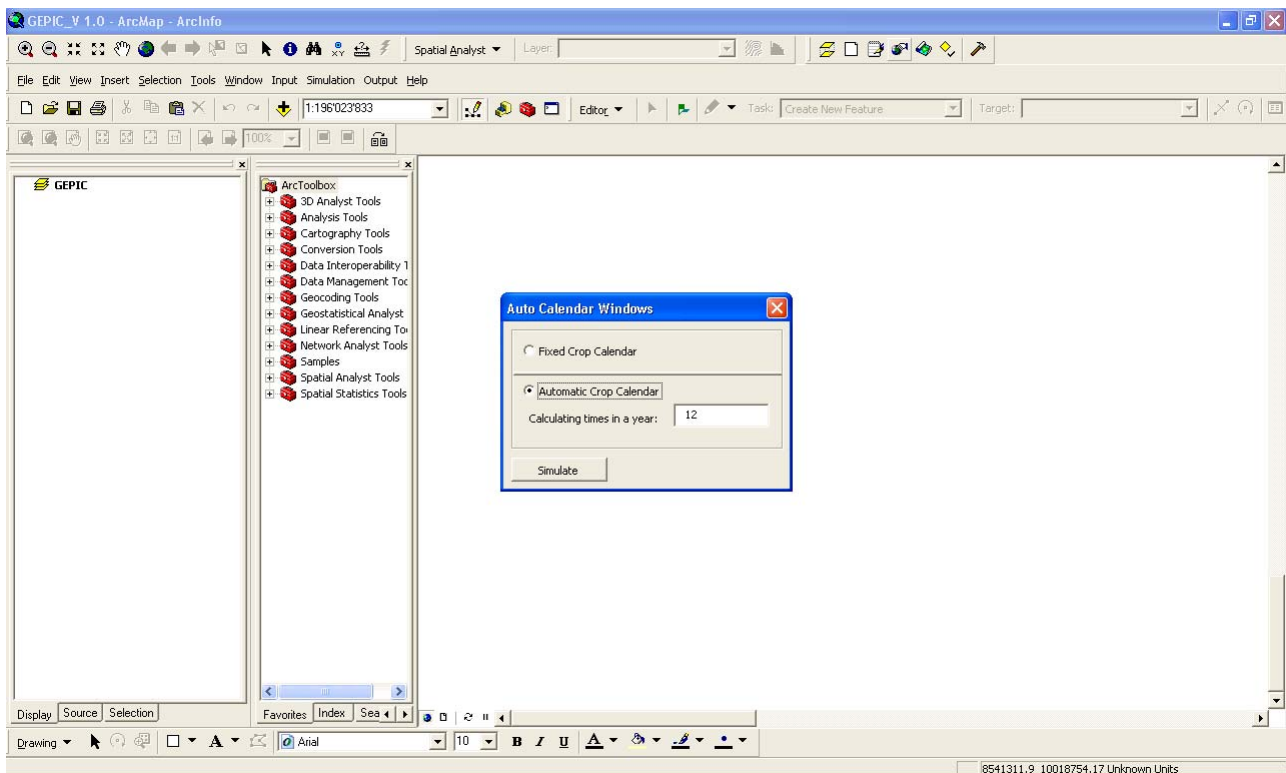


Figure 26. Auto calendar form

Click on the *Simulate* tab. The following *windows32.exe* window will show up.

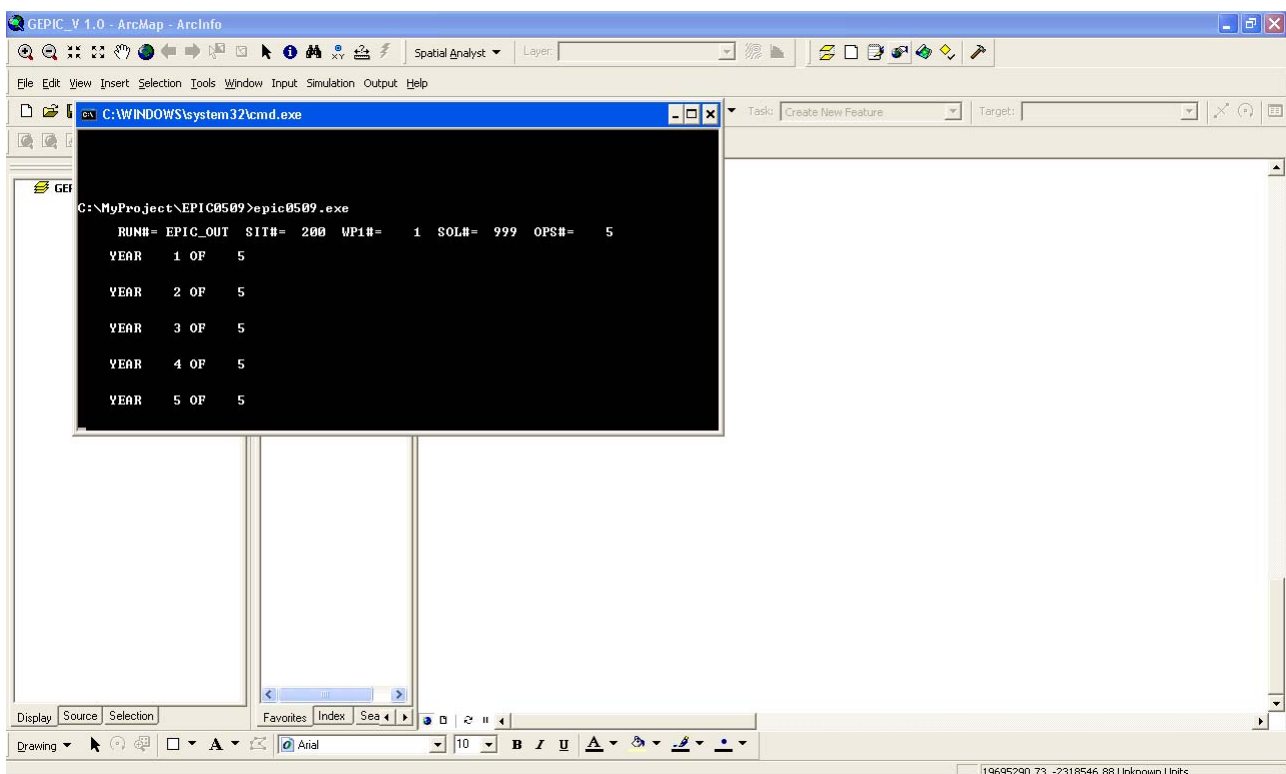


Figure 27. A window for model simulation

Note: you must leave the *windows32.exe* window open. Closing it will terminate the simulation. At the end of the simulation this window closes by itself.

This simulation will take about 10 minutes. It could last longer or shorter, depending on the speed of your computer. Certainly, when you simulate for a larger area (e.g. the entire world) with higher spatial resolution, it will take much longer time.

Step 6: Generate your output maps

When the *windows32.exe* window has closed at the end of the simulation, it is now time to generate the yield map.

The fifth button is the *Map Generation* tool. You will generate your yield map with it. You can also create other maps, depending on the output variables you are interested in.

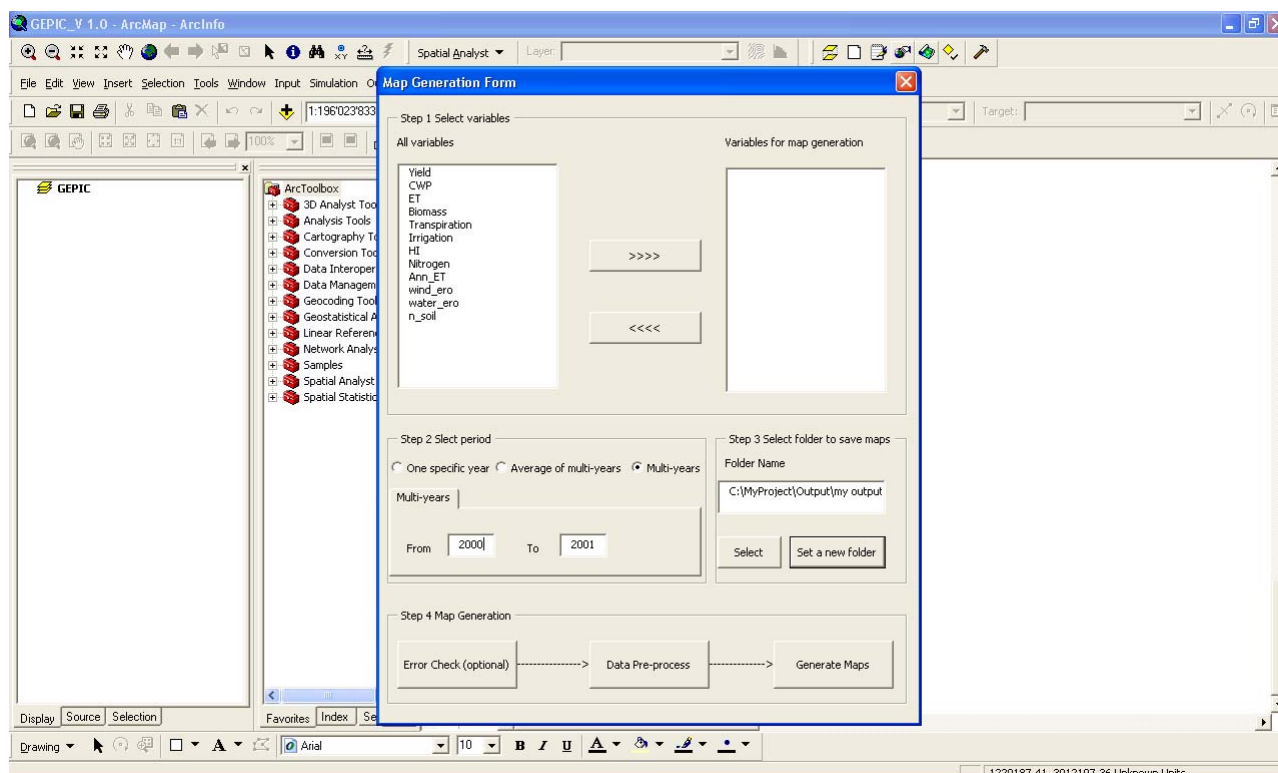


Figure 28. Map generation form

A. Open *Map Generation* form

Click on the *Map Generation* button, the *Map Generation* form opens (Fig. 30).

B. Select variables

You can select any variables for map generation by clicking on each variable in the *All Variables* column and using the directional arrow to send it into the *Variables for Map Generation* column. You can also deselect any of the variables in the *Variables for Map Generation* column by clicking on it and using the directional arrow to send it to the *All Variables* list.

The following variables are included in the *All Variables* list:

- Yield: crop dry yield in kg/ha
- CWP: crop water productivity ($CWP = \text{yield} / ET$ in kg/m^3).
- HI: Harvest Index
- Biomass: biomass generation in kg/ha.
- Annual ET: annual evapotranspiration in mm

- Irrigation: irrigation water requirement of crop in mm
- Nitrogen application rates in kg/ha
- N_soil: nitrogen in soil in kg/ha
- Biomass in kg/ha
- Yield: crop dry yield in kg/ha.

When you need to generate maps for other variables, add them in the above form yourself. This is easy. Please follow the steps in 6.2 *How to add an output variable for map generation in GEPIC*.

For this exercise we are only interested in crop yield. Click on *Yield* in the *All Variables* list and use the directional arrow to send it to the *Variables for Map Generation* list.

C. Select period of interest

In the *Step 2 (Select Period)* segment, check the *Multi-years* box and type in 2000 in the *From* and 2001 in the *To* field.

Note:

- To generate maps for *one specific year* you would need to check the *One Specific Year* box and then type in the year of interest.
- To generate individual maps for *more than one year*, you should check the *Multi-years* box and then type in the years of interest in the *From* and *To* fields.
- Make sure the years selected are within the *simulation years* range selected in the *Options* form.

D. Select folder to save output maps

In the *Step 3 Select Folder To Save Map* segment, click on the *Set a new folder* tab. Navigate to “C:\MyProject\Output”. Click on the *My Output* folder and click *ok*.

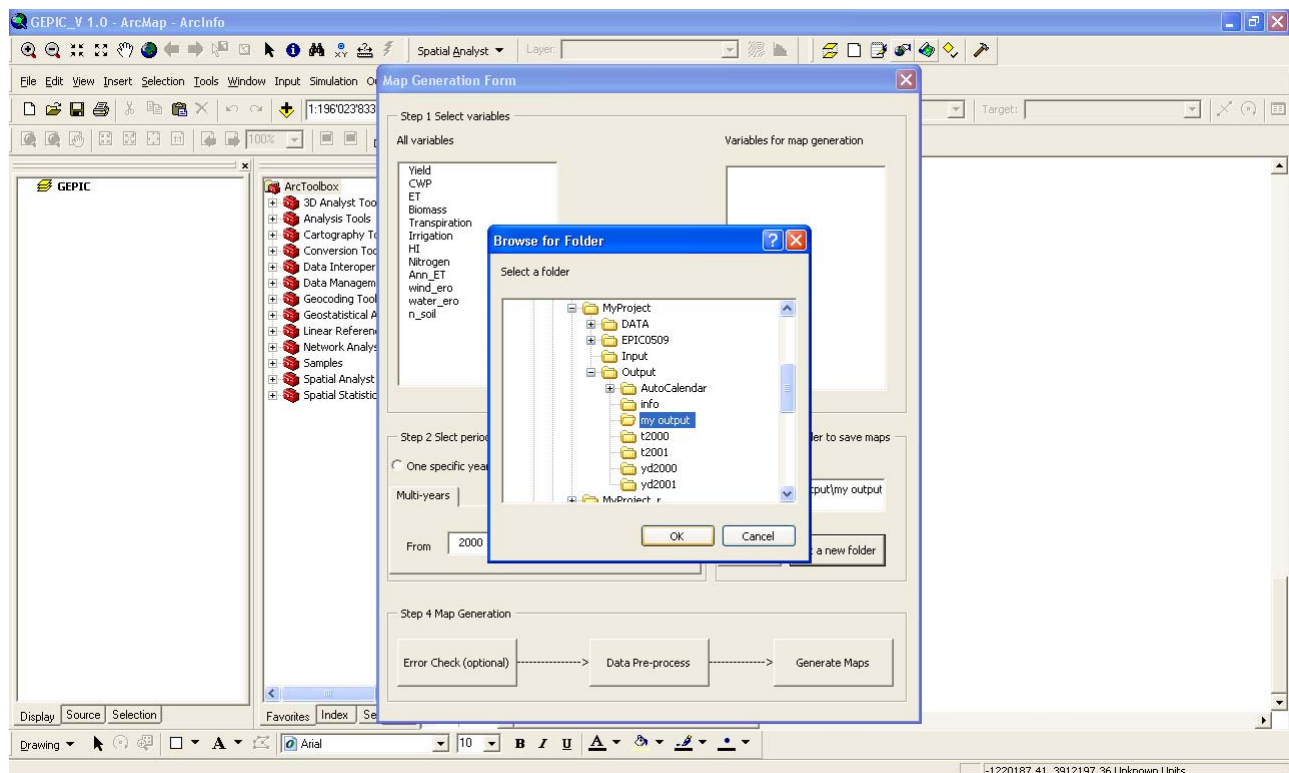


Figure 29. Select folder to save output maps

Click *ok* in the dialogue window that appears.

D. Map generation

We are now ready to generate our maps. Click on the *Error Check (optional)* button to check for possible simulations errors and wait for the system to run. After the *windows32.exe* has closed, click on the next tab *Data Pre-process* and wait for the *windows32.exe* window to close. Then click on the *Generate Map* tab. Your map will now be generated (Fig. 30).

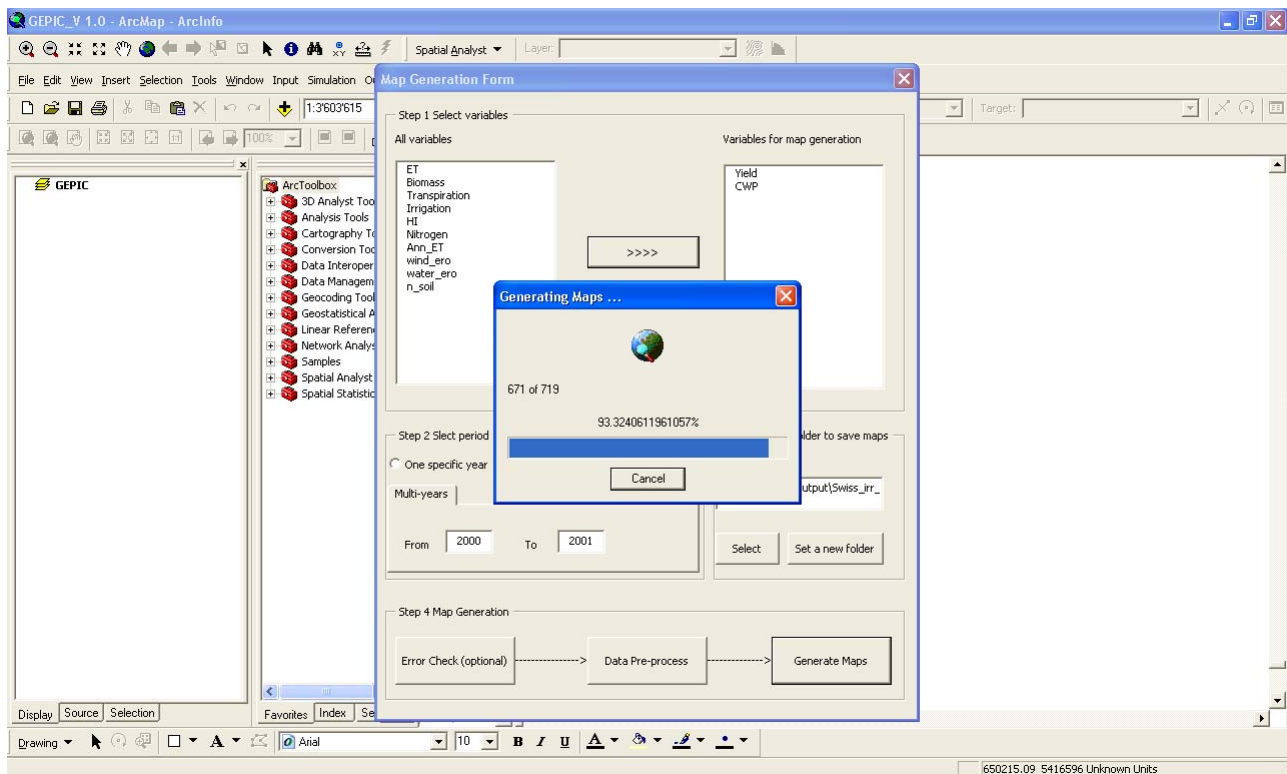


Figure 30. Map generation

Wait until all the maps are generated. Close the *Map Generation form*.

F. Add output maps in ArcGIS

Click on the *Add Data* tool in ArcMap, navigate to *Output* folder, then to the *Swiss_irr_wht* folder where your map was saved. Click on *yd2000*.

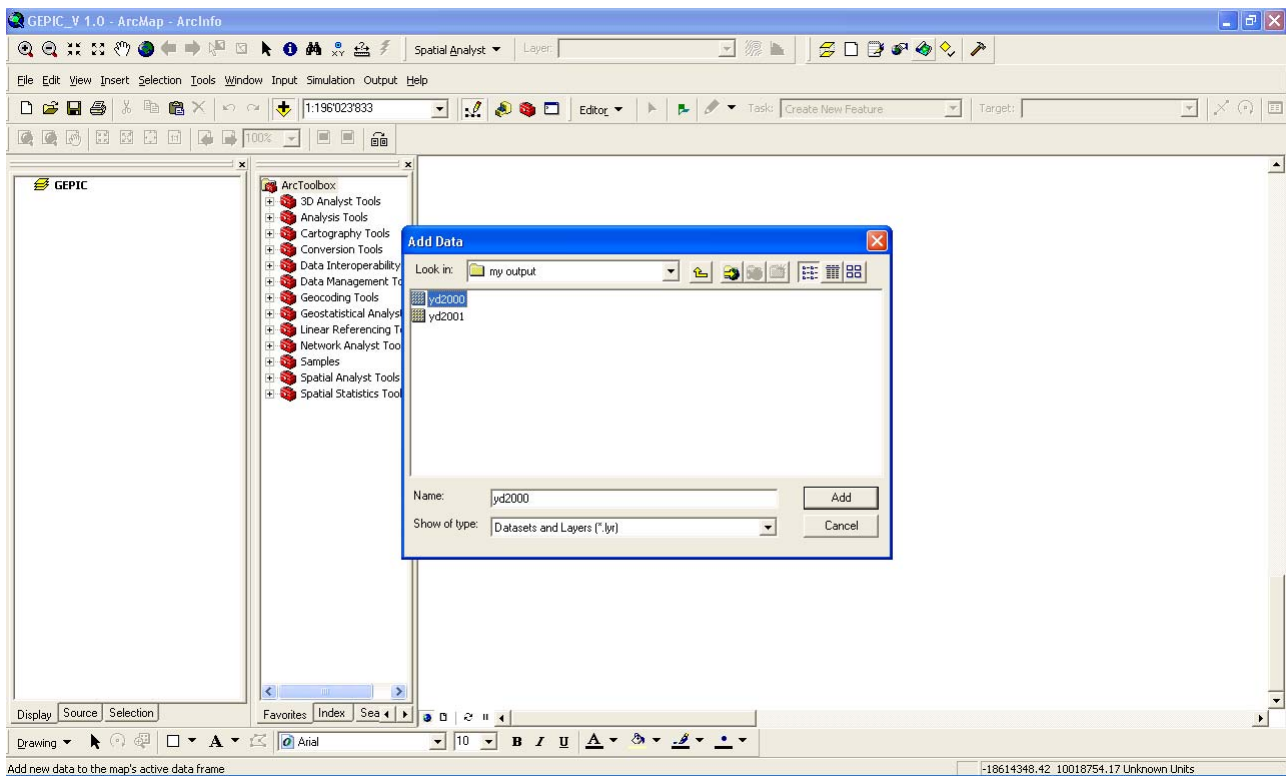


Figure 31. Select output raster data

Your data view should look like this:

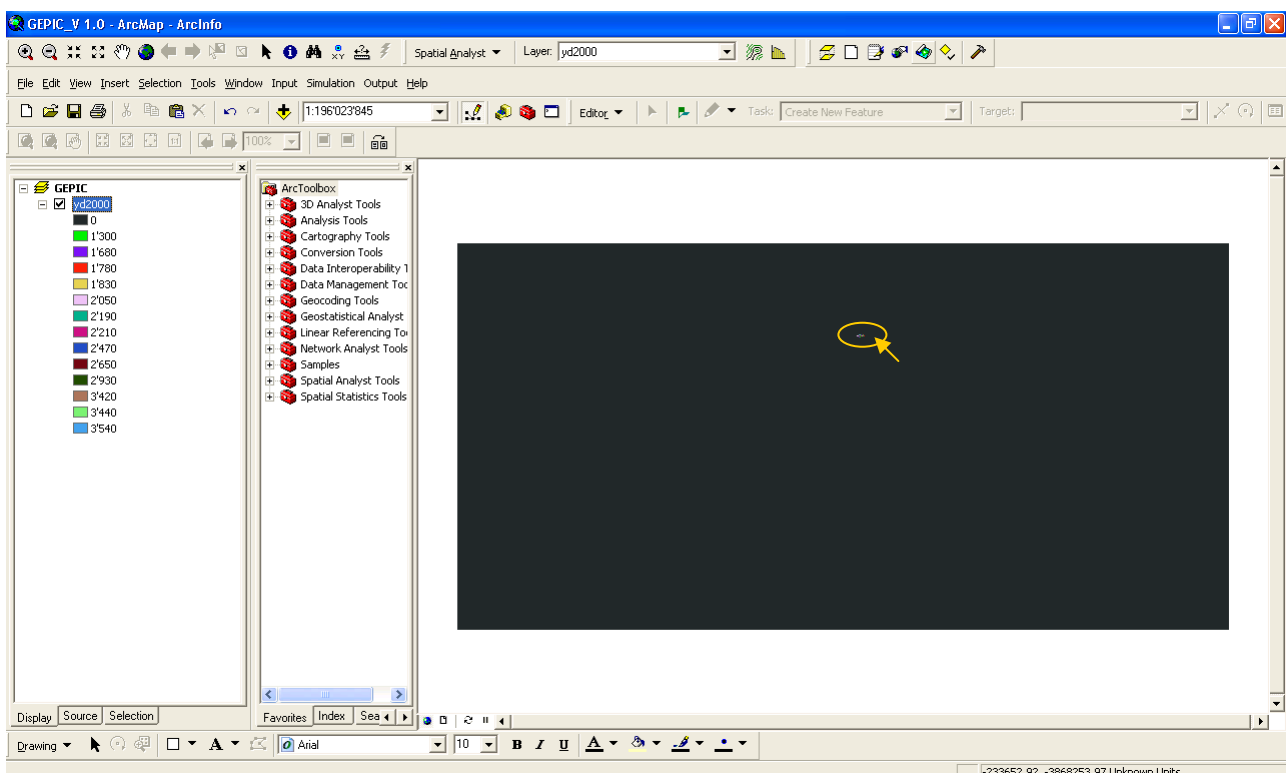


Figure 32. Add output map into ArcGIS

Switzerland is not really a big country, is it? You can use the zoom tool on the toolbar to zoom into it. It should appear like Fig. 33 if you zoom it sufficiently:

ArcGIS

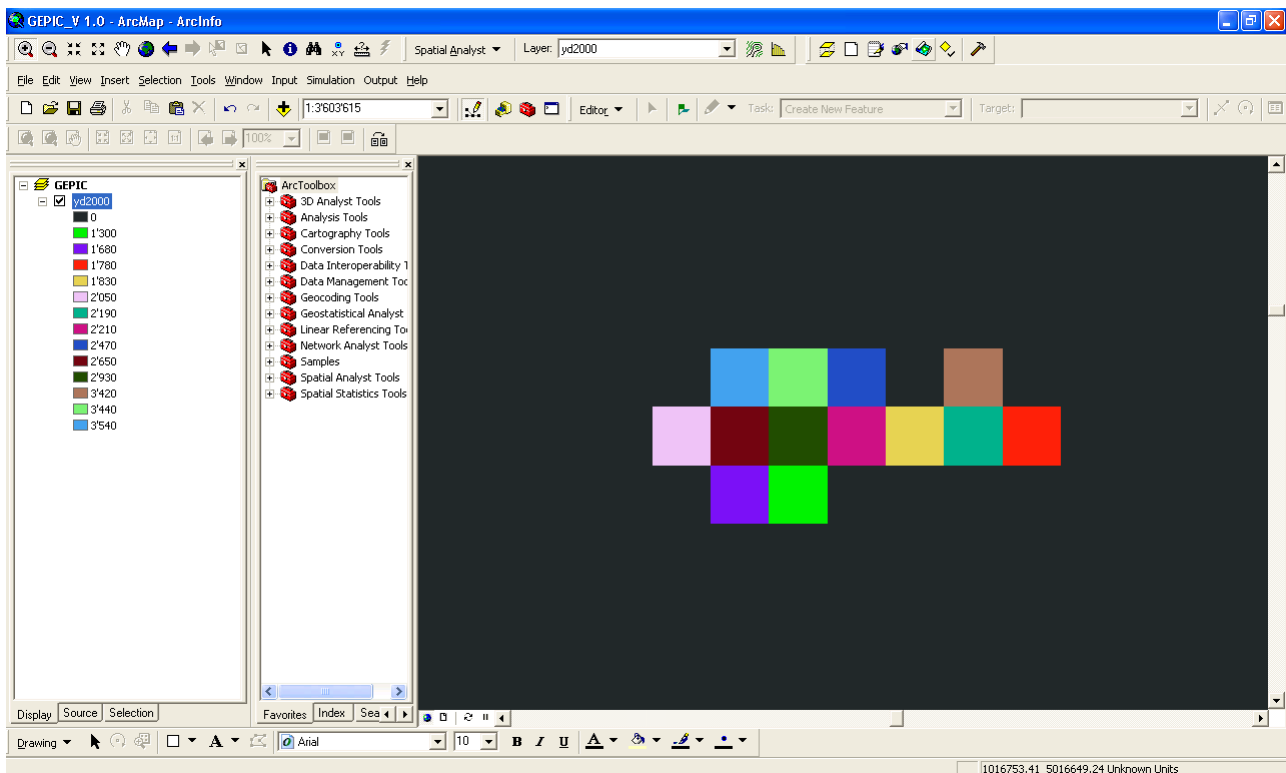


Figure 33. Zoom in the output data

The map displays the yield of irrigated wheat in Switzerland with a spatial resolution of 0.5 arc degrees (approximately 50 x 50 km² nearby the equator). Using the *Add Data* tool on the ArcGIS toolbar, navigate to the *Country* folder (in the *DATA* folder) and add map of Switzerland, *switzerland.shp*. Remove the *Fill colour* of the Switzerland shapefile. Your data view should look somewhat like this:

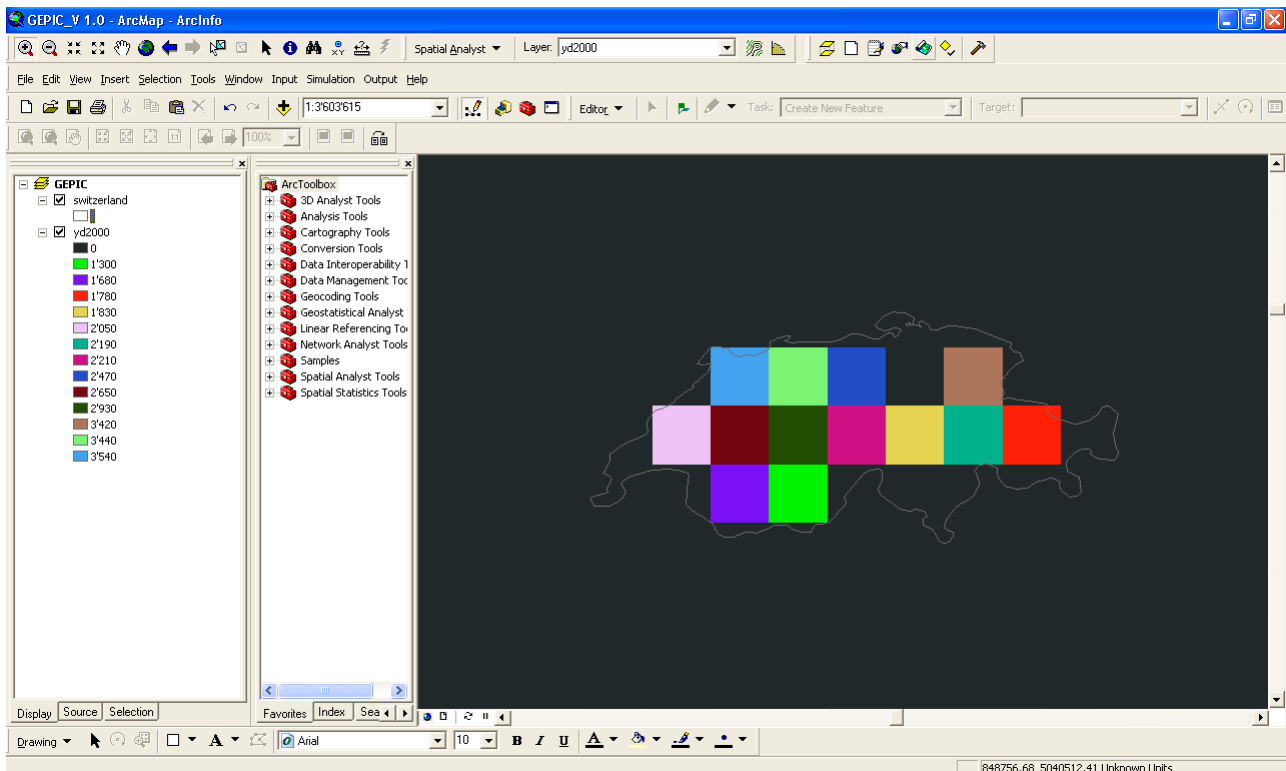


Figure 34. Add country boundary to crop yield map with country boundary

The yield map shows that yields of irrigated wheat were higher in the North than in the South in Switzerland in 2000,

You can also view the Yield map for the year 2001 in the same way mentioned above.

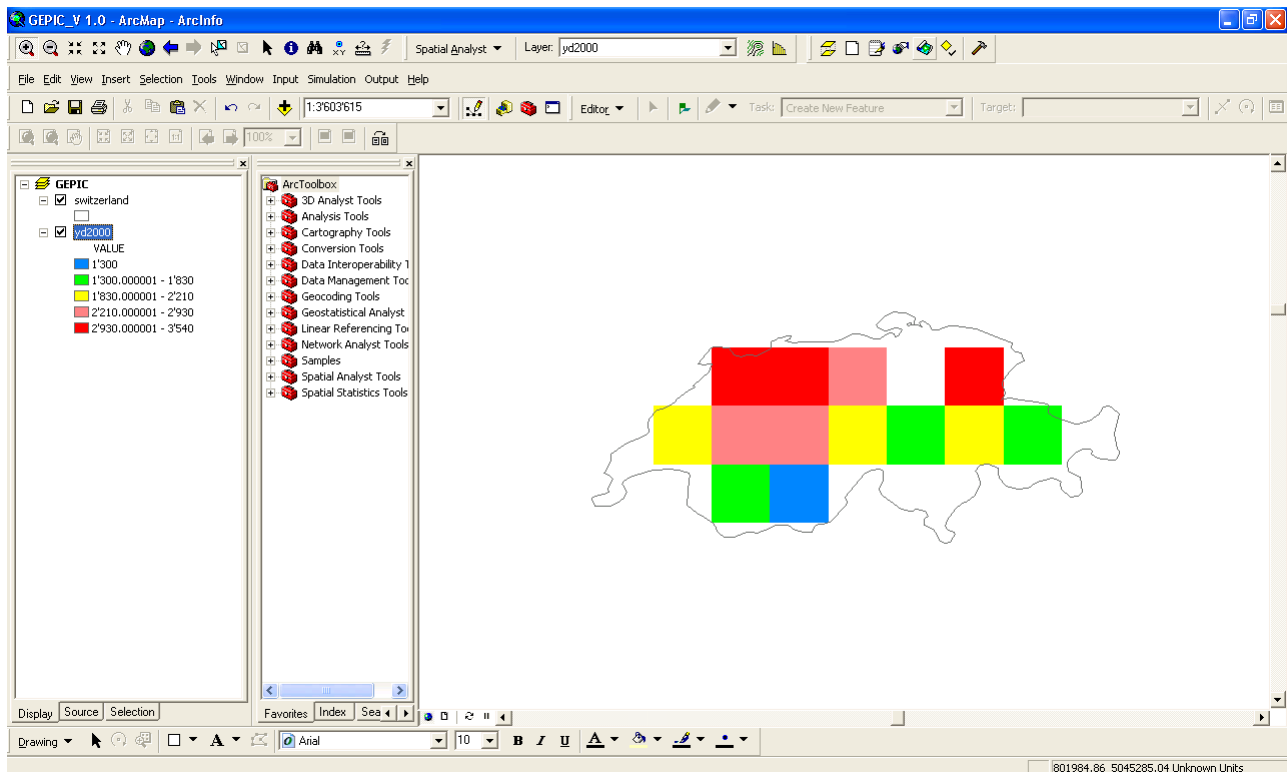


Figure 35. Crop yield map with country boundary

Step 7: Saving your runs

Once you are through with this simulation, you may wish to save your simulation. The Sixth button in the GEPICToolbox toolbar enables you to do this.

- Click on this tab to open the *Save Run* form. You will then select a folder in which your run will be saved.
- Click on the *Set A Folder* tab. Navigate to your GEPICToolbox folder and click on the arrow beside the *Output* folder. Click on *Swiss_irr_wht* and click *ok*. Click *ok* again in the dialogue box and click on *Save*. Your run will now be saved. When the *window.exe* closes, close the *SaveRunsForm*. Now you can view your run files in the folder you selected.
- Open the *Swiss_irr_wht* folder. You should have one *Autocalendar* folder and eight other files in it. The *Autocalendar* folder contains the results of your simulation. Whenever you wish to generate maps from these results, you can do so by copying the *Autocalendar* folder contents to the *Autocalendar* folder in the EPIC0509 folder.

In case that one or more of these files are not saved automatically, you should save it manually. To copy any of these files manually, open the EPIC0509 folder, scroll to the file, copy and paste it to the folder you plan to save files.

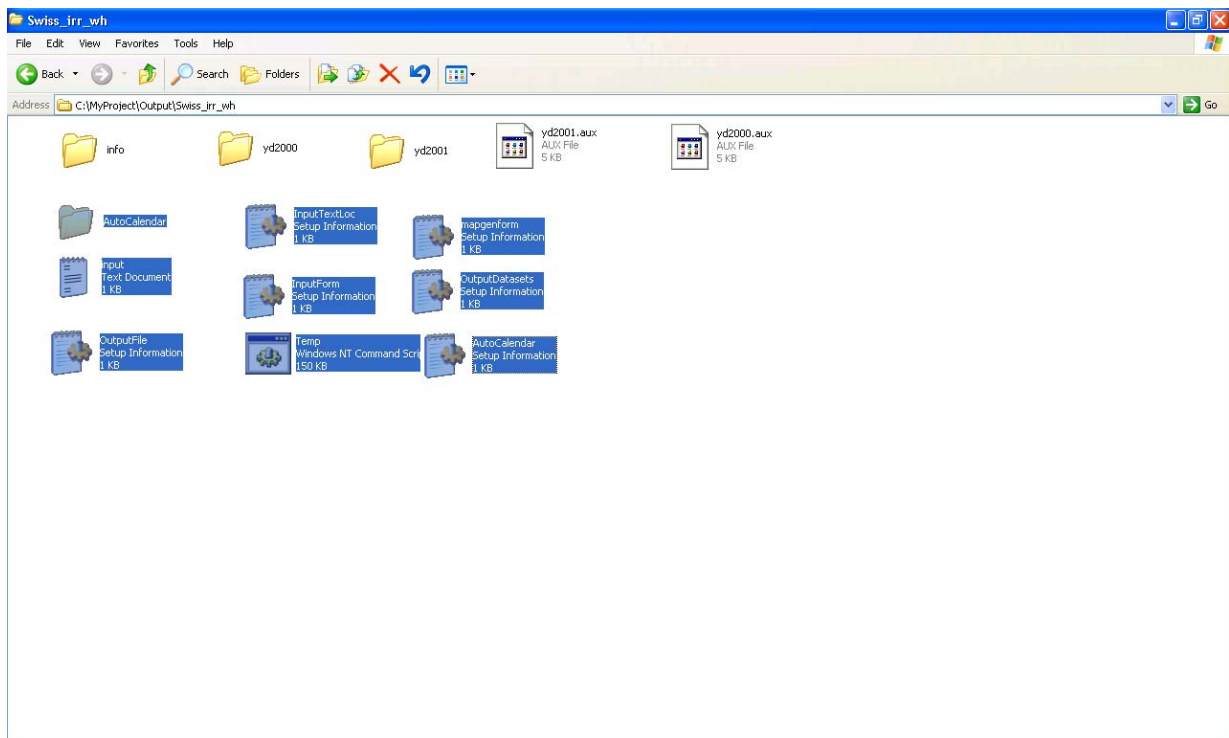


Figure 36. Save your runs

6. Advanced knowledge and functions

6.1 How to add a crop in GEPIC

The following texts show the steps to add crop *tomato* in the GEPIC model. When you plan to add a different crop, you need to follow the same steps but should change the places with **pink** colour.

- Step 1: Edit **TOMA.opc** file and add to the folder "\EPIC0509"
- Step 2: Add the file name to \EPIC0509\OPSCCOM.DAT ("**44 TOMA.OPC**")
- Step 3: Add the crop name in \EPIC0509\CROP.TXT ("tomato")
- Step 4: In GEPIC -> AutoCalendarForm -> Simulate, add the following (Location: above the sentence " ADD THE CROPS YOU PLAN TO SIMULATE"

```
If InputTextFileForm.ComboBox2 = "tomato" Then
    iCropCode = 44 'crop code in crop.txt file
    Open sCropCMD For Append As #1
        Print #1, "util run epicrun.dat iops(1)=" & 44 'crop code in crop.txt file
    Close #1
    sOPSC = "toma.opc"
End If

----- Above "ADD THE CROPS YOU PLAN TO SIMULATE
If InputTextFileForm.ComboBox2 = "tomato" Then
    If iCropCode <> 44 Then 'crop code in crop.txt file
        iCropCode = 44
        Print #FilNum, "util run epicrun.dat iops(1)=" & 44 'crop code in crop.txt file
    End If
End If
```

Note: it's necessary to copy **TOMA.opc**, OPSCCOM.DAT, and CROP.TXT to the EPIC0509 folder where you plan to run the program.

6.2 How to add an output variable for map generation in GEPIC

The following texts show the steps to add the variable *ET* for map generation. When you plan to add a different variable, you need to follow the same steps but should change the places with **pink** colour. In the following example, **Ann_ET** is the text shown in the Map Generation Form (Fig. 28, *All variables* text box). **aet** is the variable code (see [4.3 Format of output files](#))

- Step 1: The output variable has to be included in the annual output files (e.g. 1995.txt, 1996.txt etc). If not, users have to edit EPIC0509.FOR file to generate this variable in the annual output files.
- Step 2: Go to GEPIC → Modules → OpenMapGenFormMod, add
.AddItem "**Ann_ET**"
- Step 3: Go to GEPIC → Forms → MapGenForm, Click button "Generate Maps", add the follows

```
If sVariable = "Ann_ET" Then sMapName = "aet" + CStr(j) + "_" + TextBox3.Text
'Add 1

If sVariable = "Ann_ET " Then sMapName = "aet" + CStr(j)
```


'Add 2

```
If sVariable = "Ann_ET " Then sMapName = "aet" + CStr(j) + "_" + TextBox3.Text  
'add 3
```

```
If sVariable = "Ann_ET " Then sMapName = "aet" + CStr(j)  
'add 4
```

Step 4: Go to GEPIC → Modules → CreateMaps, add the follows
Dim Ann_ET(0 To 1000, 0 To 1000) As Long

```
Ann_ET(intCol(TotCellNum), intRow(TotCellNum)) = CLng(ET)
```

```
If Content = "Ann_ET" Then  
    vSafeArray(i, j) = CLng(Ann_ET(i, j))  
End If
```

6.3 How to install and use Hawth's Analysis Tool in ArcGIS

To install the *Hawth's Analysis Tool* in your computer, you need to first download it from <http://www.spatialecology.com/htools/download.php>, and then install it. After the installation, you should find an extension called *Hawth's Analysis Tools* in ArcGIS (ArcGIS → Tools → Extensions). Make sure this extension is selected. The *Hawth's Analysis Tool* dropdown menu should now appear on your ArcGIS standard toolbar. Otherwise, go to View → Toolbars and select *Hawth's Tools*.

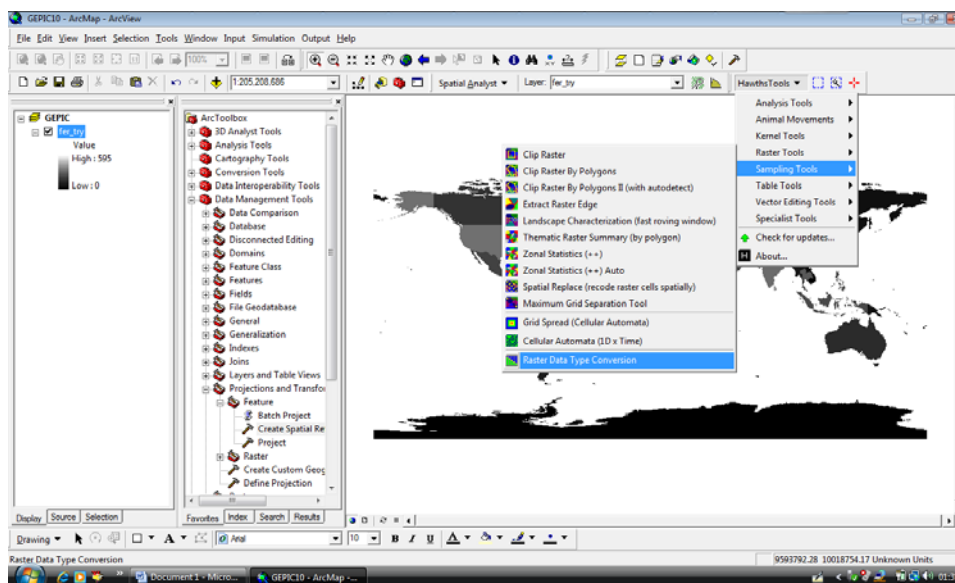


Figure 37. Interface of the Hawth's Analysis Tools

The following steps are needed to convert a raster dataset type to *LONG* using the *Hawth's Tools*:

- A. Make sure the dataset you wish to convert is listed in the ArcGIS *Table of Contents*. Click on the *Hawth's Tool* drop down menu, place the mouse pointer over "Raster Tools" and select "Raster Data Type Conversion" (See Fig. 37).

- B. In the *Raster Pixel Type Converter* window, use the drop arrow in the *Input* field to select the raster dataset you wish to convert. The original dataset type should now be displayed in a frame below.
- C. In the *Output* segment, use the drop arrow to select GRID as *Output dataset format* and specify the location where the raster dataset should now be saved (*raster dataset location*).
- D. Select *LONG* in the *Output data type* field; a value will appear in the *New NoData Value* field, ignore this.
- E. Click on *OK* for the data type conversion to proceed.
- F. At the end of the conversion process, an error message may pop-up (see Fig. 38). This is a bug in the *Hawths Analysis Tools*. Ignore this error, and click on *OK*. Your raster, by now, has already been converted. You should now be able to use it in GEPIC. You can also add and view your new raster dataset by using the *Add Data* toolbar in ArcGIS.

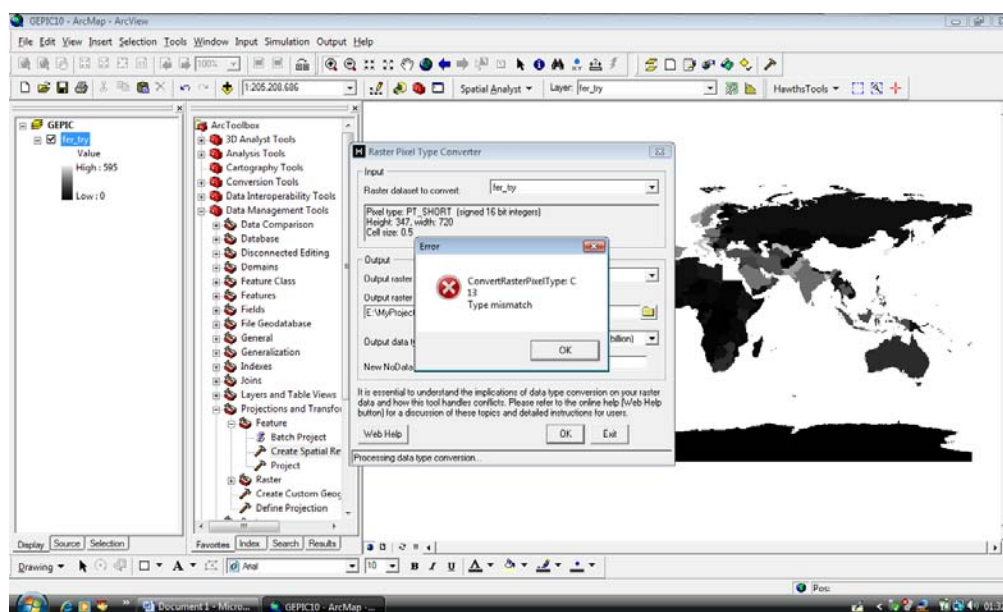


Figure 38. Error message from the Hawth's tool

Note: In case of an error messages different from the one shown above, restart the procedure and check the file name you gave for your new raster dataset. Make sure the file name does not exceed 13 characters.

7. Publications related to GEPIC

Peer-reviewed Journal Publications

1. Liu J., Jimmy R. Williams, Zehnder A.J.B., Yang H., 2007. GEPIC – modelling wheat yield and crop water productivity with high resolution on a global scale. *Agricultural Systems* 94 (2). pp 478-493.
2. Liu J., Wiberg D., Zehnder A.J.B., Yang H., 2007. Modelling the role of irrigation in winter wheat yield and crop water productivity in China. *Irrigation Science* 26 (1). pp 21-33.
3. Liu J., Zehnder A.J.B., Yang H., 2008. Drops for crops: modelling crop water productivity on a global scale. *Global NEST Journal* 10 (3): 295-300.
4. Liu J., Williams J.R., Wang X., Yang H., 2009. Using MODAWEC to generate daily weather data for the EPIC model. *Environmental Modelling & Software* 24(5): 655-664.
5. Liu J., 2009. A GIS-based tool for modelling large-scale crop-water relations. *Environmental Modelling & Software* 24: 411-422.
6. Liu J., Fritz S., van Wesenbeeck C.F.A., Fuchs M., Obersteiner M., Yang H., 2008. A spatial explicit assessment of current and future hotspots of hunger in Sub-Saharan Africa in the context of global change. *Global and Planetary Change*. 64 (3-4): 222-235.

Other Publications

7. Liu J., Yang H., 2008. The impacts of global climate change on irrigation water requirement of wheat in China. In: *Proceedings of the 13th IWRA World Water Congress*. Montpellier, France, 1-4 September 2008.
8. Liu J., 2007. Modelling global water and food relations – development and application of a GIS-based EPIC model. PhD Thesis. DISS. ETH NO.17069. Swiss Federal Institute of Technology Zurich, Zurich, Switzerland.
9. Liu J., Yang H., Zehnder A.J.B., 2007. Simulation of crop water relations on large scales with high spatial resolutions. In: van Bers C., Petry D., Pahl-Wostl C. (Eds.), *Global Assessments: Bridging Scales and Linking to Policy*. GWSP issues in global water systems research No. 2: 44-48. The Global Water System Project. Bonn, Germany.
10. Liu J., Zehnder A.J.B., Yang H., 2007. Drops for crops: modelling crop water productivity on a global scale. pp A835-842. In: Lekkas T.D. (ed) *Proceedings of the 10th International Conference on Environmental Science and Technology*. Kos Island, Greece, 5-7 September 2007. ISSN: 978-960-7475-40-4.
11. Liu J., Zehnder A.J.B., Yang H., 2006. Global crop water productivity simulation for wheat – an application of the GEPIC model. pp 13-14. In: *World Congress: Agricultural Engineering for a Better World: The proceedings of the 2006 World Congress*. Congress, Bonn, Germany, 03-07 September 2006. ISBN: 3-18-091958-2.
12. Yang H., Liu J. Zehnder A., 2005. Optimiertes Wassermanagement in der weltweiten Nahrungsmittelproduktion. *Eawag Jahresbericht 2005*: 30.

Papers under Review

13. Liu J., Zehnder A.J.B., Yang H., 2009. Global consumptive water use for crop production: the importance of green water and virtual water. Submitted to *Water Resources Research*.
14. Liu J., Yang H., 2009. Spatially explicit assessment of global green and blue water uses in cropland. Submitted to *Journal of Hydrology*.